

TEL DOR 19 88 field G square A.H.3.4 phase (in area): LOCUS L9224

date opened 08/07/88 level 16.92 date closed 11/07/88 level 16.50 floor level _____ type of locus SURFACE SOIL

loci above _____ loci below L9225 L9226 sealed by _____
L9227 L9228 L9230

graphic description final locus no. arch. unit / logical area stage (in sq.) final STRATUM

Summary:

Description: OPENED: TO BEGIN EXCAVATION OF SQUARE AH 34

DEFINITION/LIMITS: EXTENDS TO ALL FOUR BALKS

MATRIX: LOOSE MEDIUM-BROWN SOIL WITH FAIR AMOUNT OF POTTERY, LARGE AMOUNTS OF MARBLE TESSERAE ROOFTILE FRAGMENTS, SMALL TO MEDIUM-SIZED ROCKS

CLOSED: SOIL CHANGE: SOFT GREY WITH LARGE ROCKS

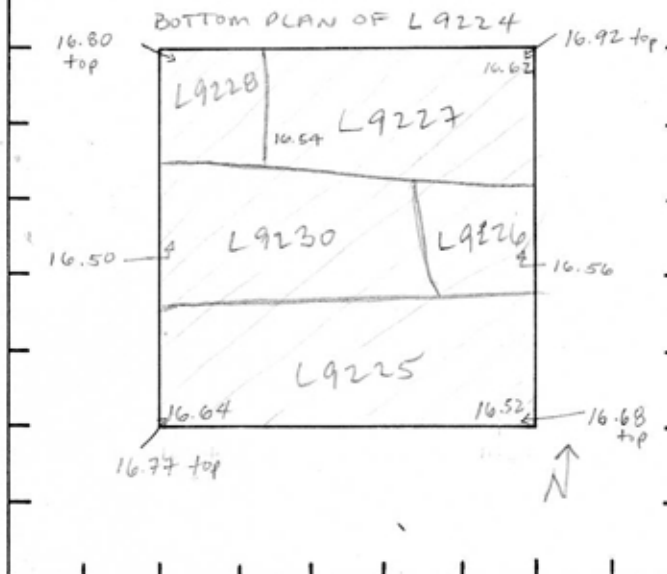
IN CENTER OF SQUARE, L9230 CUTS INTO HARD DARK BROWN TO NORTH L9227, EAST L9226 AND SOUTH L9225; RUBBLE IN NW CORNER OF SQUARE L9228. L9230 AND L9226 REPRESENT SUSPECTED

ROBBED TRENCH FOR CONTINUATION OF W9085; BELIEVED TO HAVE BEEN ROBBED OUT TO THE EAST OF N-S DRAIN IN AI 34 *

RELATION TO OTHER ELEMENTS: COVERED ALL SUBSEQUENT FEATURES. LOCI DIRECTLY BELOW ARE

L9225, L9226, L9227, L9228, L9230.

* Courses of the robbed out wall were eventually uncovered along the line of 9230 + 9226 at an elevation of ca 15.58; this is W9282



section

photos

- reason for opening
- definition / limits
- reason for closing
- relation to other elements
- working photos, nos:
- publication photos
- architects permission

written by AM. ABRALDES checked by J. Zorn

