

TEL DOR

1987

field

a

square

A.I.3.2

phase (in area):

LOCUS L9165

date opened

23/07/87

level

14.72 - 14.63

date closed

04/08/87

level

14.45

floor level

14.45 - 14.36 / (A131)

type of locus

FILL PARTLY ABOVE FLOOR.

loci above

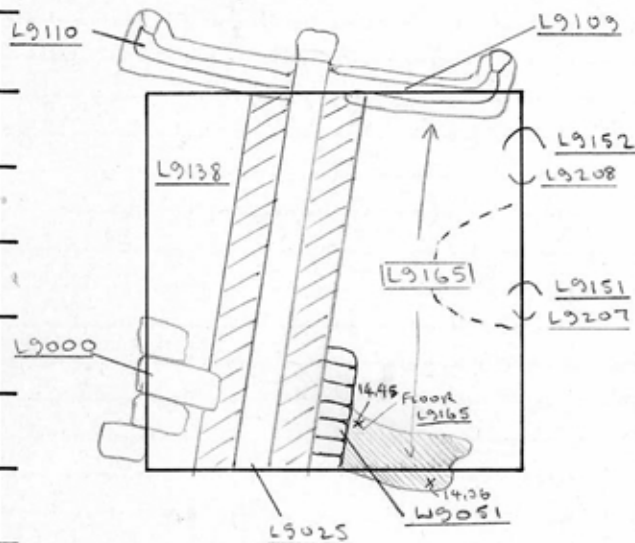
9151 9152

loci below

9207 9208

sealed by

graphic description



section

photos

- reason for opening
 definition / limits
 reason for closing
 relation to other elements
 working photos, nos:
 publication photos
 architects permission

written by CHMchecked by J Zorn

OK

final locus no.

arch. unit / logical area

stage (in sq.)

final STRATUM

Summary:

Description:

REASON FOR OPENING WE CAME DOWN UPON A SERIES OF BROKEN AMPHORA, WHICH LED US TO THINK WE MIGHT BE COMING DOWN ON A FLOOR. THE POSITIONS OF THE AMPHORA SEEMED TO INDICATE THE END OF PIT [L9151]

DEFINITION / LIMITS BORDERED ON EAST BY EAST-BALK, ON SOUTH BY SOUTH BALK, ON WEST BY MATERIAL BELOW [W9051] AND DRAIN [L9025], ON NORTH BY MATERIAL BELOW DRAIN [L9105]

MATRIX CONSISTED MAINLY OF THE CLAYEY MATRIX OF [L9152] ABOVE WITH PATCHES OF MUD-BRICK MATERIAL. MANY SHEETS, INCLUDING FOUR LARGE AMPHORA WHICH WERE SENT FOR POSSIBLE RESTORATION.

REASON FOR CLOSING THE LOCUS BECAME DIVIDED INTO A PIT [L9207] OF SOFT FILL, AND A LARGE AREA OF RUBBLE-FILLED MUD-BRICK MATERIAL [L9208]

RELATION TO OTHER ELEMENTS LIES BELOW [L9151] AND [L9152], AND PARTLY ABOVE AN AREA OF RADICALLY SLOPING PLASTER FLOORING - FLOOR [L9165]. THIS SEEMS TO CONSIST OF SEVERAL SUPERIMPOSED FLOORS, WHICH EXTEND INTO A131 (NOT NOTICED EARLIER), AT A LOWER LEVEL. THESE FLOORS SEEM TO ROUGHLY CORRESPOND IN HEIGHT WITH THE IRON-AGE FLOOR [L9081] EAST AND WEST IN A132. [L9165] ALSO COVERS PIT [L9207] AND MUD-BRICK AREA [L9208]. IT REACHES, AND IS IDENTICAL WITH, THE MATERIAL BELOW [W9051] DRAIN [L9025] AND DRAIN [L9105].

LOCUS

L19165

BASKET LIST

basket no.	level	str def	cont	R +	periods	comments
91362	1462	0301	2	12		06-03
91361	1462	0311				BONES
91371	1462	0313				Glass
91382	1462	0301	Ⓡ	05		Same vessel as B91394
91394	1462	0301	Ⓡ	05		Same vessel as B91382
91398	1462	0301	Ⓡ	05		
91401	1448	0301	Ⓡ	04 02 06		all sherds for restoration
91402	1448	0311				BONES
91414	1448	0308				Loom weight
91420	1448	0308				Carnelian
91434	1448	0308				Drilled stone
91435	1448	0301	Ⓡ	05		
91445	1448	0301	Ⓡ	05		all one pot?
91446	1448	0301	Ⓡ	05		
91453	1460	0308				Flint Blade
91461	1448	0313				Glass
91464	1445	0302	Ⓡ	05 04 03		06 mainly 05
91465	1445	0311				Bones
91497	1445	0308				Sling Ball?
91498	1445	0308				
91572	1445	0305				Iron
91719		0308				Stone grinding table