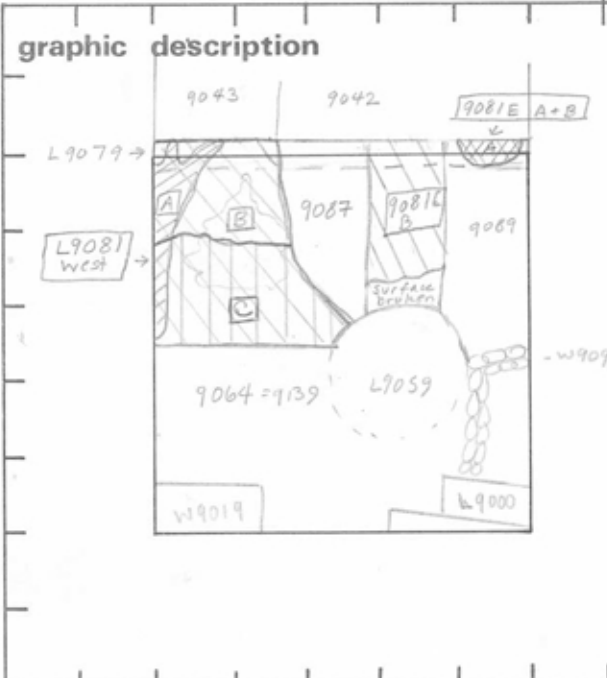


TEL DOR 19 87 field G square AJ.3.2 phase (in area): 4/3?? LOCUS L19081
 date opened 0.6/07/87 level 14.79 date closed 14/07/87 level 14.58 floor level 14.41 type of locus FLOORS / DUMP
 loci above 9.0.4.9 9.0.7.9 loci below 9.1.1.2 9.1.1.3 sealed by _____
9.1.2.0 W.9.1.4.0(?)



section
 see over

final locus no. _____ arch. unit / logical area _____ stage (in sq.) _____ final STRATUM _____

Summary:

Description:
L9081 is a the number given to 6 patches of compact ash plaster, surface ^{white} ^{sloping}
 In the north western part of AJ32, Three superimposed surfaces were found with ash and brown soil between them. They were designated L9081. west A, B, C, from top to bottom.
 In the northeastern part of AJ32, Two superimposed floors were found, designated L9081 EAST A + B.
 The fragments of surface A, found in the west and the east are thought to have originally joined to cover the entire northern area. Their poor preservation makes this hard to prove.
 The larger portions of surface B found in the east and the west are also considered to have joined. They are separated by the cutting of L9087. In West surfaces B + C distinctly cut by L9087 in south.
 Surface C is found only in the West.

photos

- reason for opening
- definition / limits
- reason for closing
- relation to other elements
- working photos, nos:
- publication photos
- architects permission

written by R. Friedman checked by J. ZORN

Before the various floors ^{in west} were defined, test trenches produced baskets of pottery from between several surfaces. See list on back.
 West bank gives the impression that these surfaces are tip lines of an ash pit, however the surfaces did extend beyond the ash to overlie brown soil to the east.

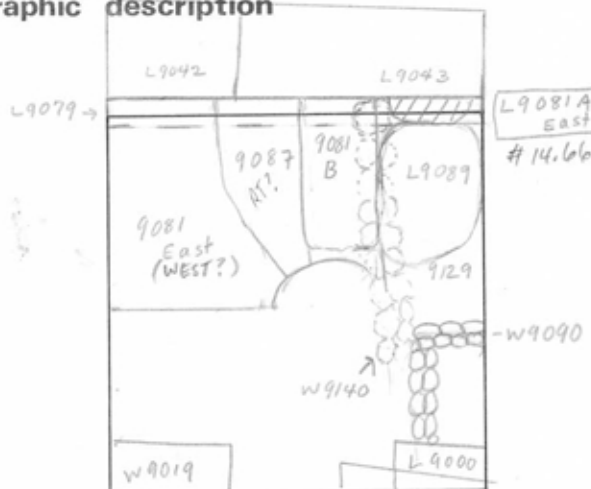
OVER →

TEL DOR 1987 field G square AJ3.2 phase (in area): 4 LOCUS L9081A EAST

date opened 06/07/87 level 147.1 date closed 09/07/87 level 146.6 floor level 146.6 type of locus DUMP
 DEFINITION of FLOOR

loci above 9079 loci below 9081B 9113 sealed by _____

graphic description



final locus no. _____ arch. unit / logical area _____ stage (in sq.) _____ final STRATUM _____

Summary:

Description:

OPENING L9081A East was opened when a patch of white floor was noticed below L9079 - bank removal.

DEF/LIM L9081A East is a small ^{poorly preserved} patch of thick compact ash plaster surface 40 cm N-S and 50 cm W-E. It is limited by AT33 L9043 on the north, IT113 limited by L9089 on all other sides. IT113 is a loose

Closed FLOOR defined

Relationships

L9081A East is thought to have originally connected to L9081A west, covering the entire Northern part of AT33. It is cut by Persian pit L9089 on the south, west and east ^{and L9043 in north.} It is above but does not overlie W9140 directly to the west. Broken remnants of 9081A East may reach eastern bank.

section

photos

- reason for opening
- definition / limits
- reason for closing
- relation to other elements
- working photos, nos: 873507.06
- publication photos
- architects permission

MATRIX Two white compact ash plaster surfaces without intervening material. Each surface approx 2-5 cm thick.

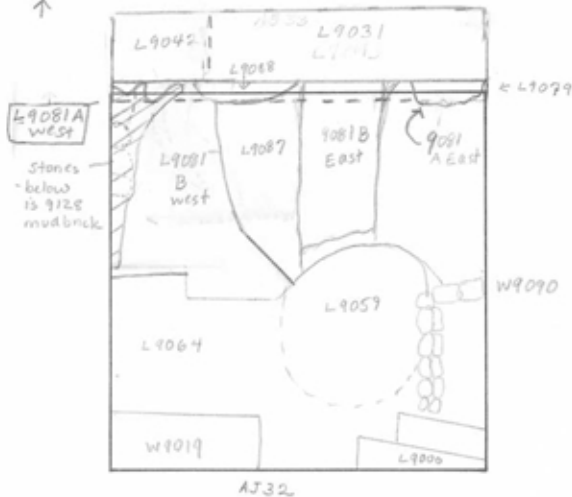
7/02 EB-S continuation of AJ33, L9043 → PIT 9168.

written by R. Friedman

checked by J. Zorn
OK

TEL DOR 19 87 field G square AJ3.2 phase (in area): 4 LOCUS L908.1A west
 date opened 06/07/87 level 1479 date closed 06/08/87 level 146.1 floor level 1473 146.1 type of locus FLOOR + DUMP
 DEFINITION OF FLOOR
 loci above 9049 9079 loci below 9081B west sealed by _____

graphic description AJ33



final locus no. _____ arch. unit / logical area _____ stage (in sq.) _____ final STRATUM _____

Summary:

Description:

OPENING L9081A west was opened to define the surface of L9049 uncovered in 1986.

DEF/LIMITS L9081A west is a compact ash/plaster surface on the western half of the square. It is the uppermost surface of 3 superimposed surfaces. It is very poorly preserved. It extends 2.45m south from the northern face of the North bank (now removed = L9079). It extends east from the western bank 7m in the south, widening to 60cm in the north. It is destroyed in the north by L9042^{L9031}, in the south by L9064 *see over

CLOSING - Floor defined.

section

RELATIONSHIPS. is surface of L9049. Lays below northern bank L9079 Lays below 3 stones abutting west bank.

photos

- reason for opening
- definition / limits
- reason for closing
- relation to other elements
- working photos, nos: L 873507.06
- publication photos
- architects permission

written by R. Friedman

checked by J. ZORV

Lays above L9081 B west, separated by 5-9cm of brown soil and ash. In the northwest it overlays a deposit of fallen mudbrick material and ash L9128. It is thought to have once covered the entire northern part of the square and may have connected to L9081 A East. It was destroyed by in the south by L9064; a pit. ^{and L9041 in the north.} Its poor preservation makes other relationships impossible to ascertain Matrix 1. compact ash/plaster 9-2 cm thick

OK

TEL DOR

19 87

field

6

square

A.J.3.2

phase (in area):

4

LOCUS

L 9.0.8.1.B

date opened

08/07/87

level

14.6.6

date closed

13/07/87

level

14.4.9

floor level

14.5.7 14.4.9

type of locus

BUMP
Floor make up corners
down on floor + floor dth

loci above

9.0.4.9

9.0.7.9

loci below

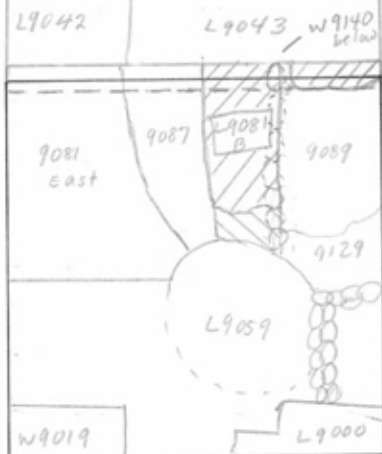
9.1.2.0

9.1.1.3

sealed by

graphic description

L9079 →



section

final locus no.

arch. unit / logical area

stage (in sq.)

final STRATUM

Summary:

Description:

[OPENING] [L9081B east] was opened to excavate [L9081A East] to level of exposed patch of [L9081B east] equivalent to the surface of [L9049], and to define surface of [L9081B east]

DEF/LIM [L9081B east] is make up of surface [L9081A east] coming down on surface [L9081B]. It is also the exposed surface of [L9081B] to the west but not connected. [L9081B] ^{exposed surface} is bounded on the north by AJ33 [L9043], on the west by [L9087] on the east by [L9089] and [L9129]. To the south it is very broken but is limited by [L9059]. The limits of the portion of [L9081B east] below A, are the same as A.

Closed Floor defined

Relationships. The patch of ^{surface of lies} [L9081B] below [L9081A] is cut by [L9089]

on the South, cut possibly by same pit or robber trench in west. [L9081B] reaches the east bank.

The exposed portion of [L9081B] - (called 9095 in photo) is cut by [L9087].

It is cut by [L9043] and [L9059] and [L9089] all Persian disturbances. [L9129] reaches [L9081B]

[L9081B] lies directly upon western row upper course of [W9140].

Matrix. The floor make up of [L9081A], was 2 superimposed layers of white ash plaster without intervening material. Below, 2 cm of brown sandy soil comes down of [L9081B] surface.

photos

- reason for opening
- definition / limits
- reason for closing
- relation to other elements
- working photos, nos: L 873507.06
- publication photos
- architects permission

written by R. Friedman

checked by J. Zorn

TEL DOR

19 87

field

16

square

AJ 3.2

phase

4

LOCUS

DUMP
L91081/B west

date opened

0.6/0.7/8.7

level

14.61
1.47.3

date closed

0.8/0.7/8.7

level

1.45.4

floor level

1.45.9 - 1.45.4

type of locus

Fill Beneath
floor coming down on floor.

loci above

9.0.4.9, 9.0.2.9,

9.0.8.1 A west

loci below

9.0.8.1 C west

9.1.1.2

sealed by

graphic description

AJ33



AJ32

final locus no.

arch. unit/logical area

stage (in sq)

final STRATUM

[OPENING] [L9081/B west] was opened to remove [L9081.A west] and define surface below.

[DEF/LIM] [L9081B west] is a sloping compact ash/plaster surface in the western part of the square. It extends 2.45 m south from the northern face of removed baulk [L9079]. It extends from the NW grid peg 170 cm in the north extending to approx 2 m in the south. It is contiguous into the western baulk. It is limited in the north by [L9041] + [L9088] in the south by [L9064] in the south east by [L9059]. It is limited in the east by [L9087].

[CLOSING] FLOOR defined

[RELATIONS] [L9081B] is below [L9081A] where A is preserved with a layer of ash and sandy

brown soil between them. [L9081B] is cut by Pit [L9088] in the north east. It is cut by L9087. This cut is particularly clear in the south east. [L9081B] is cut by [L9064] a pit in the south and destroyed by [L9042+9043] in the north. (But see AJ33 south baulk drawing = harder ash + sand layer) Considered to originally have connected with [L9081 East]. [L9081B] reaches the mudbrick debris of [L9128].

[MATRIX] The fill between the floors is composed of 2-9 cm soft grey ash, especially along west baulk, and brown sandy soil with some midden and darker soils. The surface of [L9081B] is composed of compact white ash/plaster. In the center it has been resurfaced and patched a number of times and slopes markedly to the North. Varies from 2-12 cm thick.

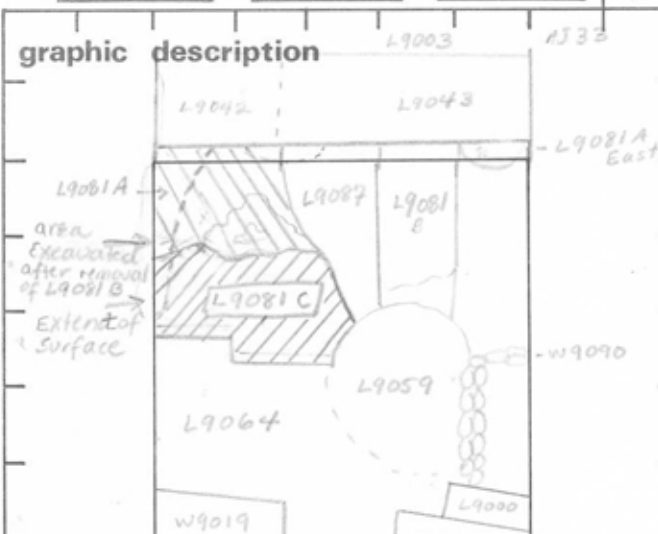
photos

please check (+ or -) when closing locus:

- reason for opening
- definition/ limits
- reason for closing
- relation to other elements
- working photos, nos: L873507.06
- publication photos
- architect's permission

OK

TEL DOR 19 87 field S square AJ.3.2 phase (in area): 4 LOCUS L9081C
 date opened 6/07/87 level 14.59 date closed 13/07/87 level 14.41 floor level 14.50 14.41 type of locus fill below floor coming down on floor.
 loci above 9.0.8.1.B west loci below 9.1.1.2 sealed by _____



final locus no. _____ arch. unit / logical area _____ stage (in sq.) _____ final STRATUM _____

Summary:

Description:

OPENING L9081C was opened to excavate L9081B and fill between floors.

DEF/LIMITS

L9081C is the fill between the surface of L9081B west and surface L9081C. This third surface exists only in the western part of the square. It is limited by L9064 in the south and L9059 in the southeast. It is limited by L9087 to the east, it runs into the western baulk. Surface L9081C extends 1.30m north from L9064 and is destroyed in the north below L9081B. L9081B surface was removed and area in north excavated to level of surface of C. For limits of excavated area see L9081B surface

Closing

FLOOR L9081C defined

Relationships

L9081C is clearly cut by L9087 in the west. L9081C may have been cut by L9064. It may also have been cut by L9059. Both are pits of the Persian period. In the north L9081C disappears at the point where L9081B had a number of resurfacings, and sloped up sharply. Possibly an intermediate surface existed in this area but it was difficult to define.

section

photos

- reason for opening
- definition / limits
- reason for closing
- relation to other elements
- working photos, nos: L973507.06
- publication photos
- architects permission

written by R. Friedman checked by J. Zorn

Matrix 1. Between 9081B + C a layer of dark ash was very pronounced along the west baulk

