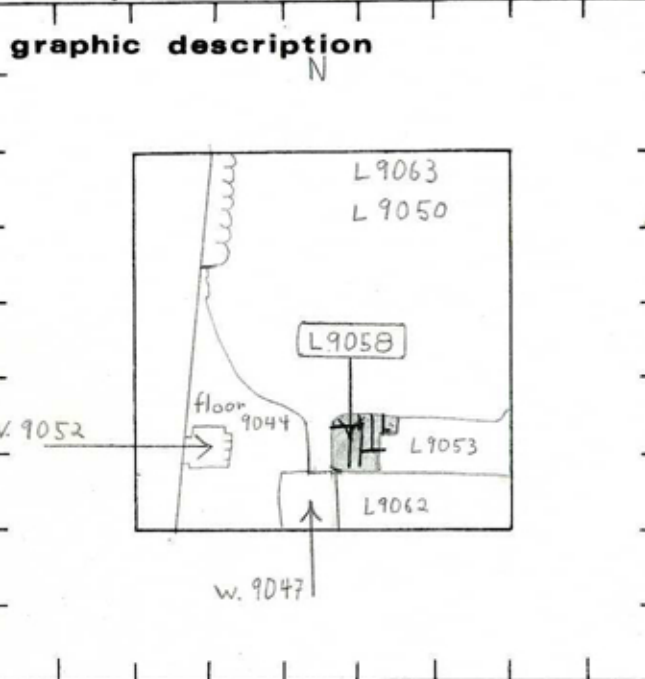


TEL DOR 1986 field 16 square A.I.3.1 phase (in sq.): LOCUS W 19.0.5.8

date opened 0.6/0.8/8.6 level 14.9.9 date closed 1.1/0.8/8.6 level NB. 14.9.9 floor level - - - - - type of locus Wall

loci above 7.0.4.5, loci below, sealed by



final locus no. arch. unit/logical area stage (in sq.) final STRATUM

OPENED: when cut stones of portion of header-stretcher pier distinguished from rubble of L9053.

DEFINITION: To west and north by L9050, to east by L9053; to south by L9053, to south-west corner by w. 9047.
* Consists of cut kurkar blocks laid header-stretcher style, one course deep. * And to west by 9044.

CLOSED: End of season. not closed.

RELATION: Pier [9058] reaches [9050], reaches [9053]; its relation to [9047] is unclear but probably cuts it; cuts floor [9044]. Pier [9058] is center pier of three - ([9058] and [9062] together forming a pier and rubble wall stretching east-west, the rubble having or collapsed into [9053] or [9057]?

- photos
- please check (+ or -) when closing locus:
- reason for opening
 - definition/ limits
 - reason for closing
 - relation to other elements
 - working photos, nos:
 - publication photos
 - architect's permission

It rests at approximately the same level as [9058] but lower (by 1 course) than [9052] which cut and partially rested upon [9044].
NB: w. 9053 is rubble trench + rubble fill of w. 9052.

Measurements: ca. 14 x 23 x .38 m.
NB. The lower elevation should read 14.70 v. L9061. DPW 1991 see 1991 card.

Locus W 9058	Dor 19 9.1	Fld 9.1	Sq A.I.3.1.	Loc. type Ashlar stone pier
Open 0.6/0.8/8.6	High at 1.4' 9.9	at NW	Low at 1.4' 9.9	at NE
Close 1.5/0.7/9.1	High at 1.4' 6.8	at SW	Low at 1.4' 6.8	at SE
Floor: type				
Length 0.6	Width 0.6	Vol		
Value i	Remove 1.5/0.7/9.1	Drawn? YES		
Photo #(1) 70295	Photo #(2) 70296	Loci 9.045		
Written by: J.P.W.	Checked by: J.R.Z.	above		
		Loci 9.636	9.659	
		below		

Unit	Phase	Stage	Stratum	PoM
-------------	--------------	--------------	----------------	------------

Summary

Opened: To define components of W9058, and to expose W9636.

Limits (N) L9056
(S) L9062, L9620.
(E) L9053,
(W) L9056

Closed: Removed, to expose W9636 below.

Matrix: An ashlar pier of seven stones, roughly worked.

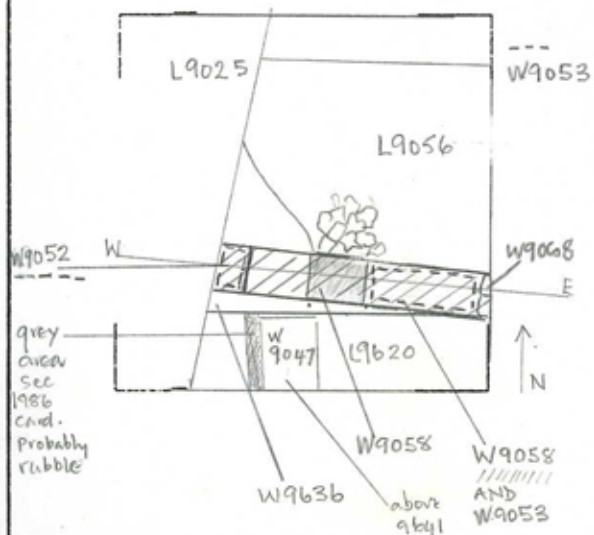
Relations: W9058, W9052, W9053, W9068 = W9058. The pier 9058 is related to W9052 to the west, and W9068 in the east balk. (They are all at el. ± 14.70. [The 1986 card for W9052 gives incorrect lower el. cross reference to L9061 for correct lower elevation, the new 1991 low elevation for W9068 confirms that all three piers have same lower elevation 14.70]. The pier 9058 reaches W9053, rubble fill which seals the Persian pit 19659 at a point when the wall W9636, below W9053, ends. The distance between the three piers is not equal, W9052 and W9058 are .75m apart and W9058 and W9068 are double that at 1.5 m apart. To the south W9058 the locus L9620 and L9641 are cut by W9058, a foundation. To the north is L9056, most of the locus is pit material but immediately to north of W9058 is mostly fallen stones. The area immediately west of W9058 is described as fallen rubble in 1986 card and it was removed. No immediate relationship can be stated. W9047 does not reach W9058 and its lowest level is 20cm above the east west wall W9058. Any connection would be tenuous. L9058 is covered by L9045 a rubble locus and covers W9636. The orientation of W9058 is 15° NW of W9636. It also fractionally covers L9659 at the eastern end where it seals the Persian pit. Rubble between W9047 and W9058 could have been removed, thereby obscuring a connection.

Additional Observations/Value: Locus seals W9636, and part of pit 19659.

Locus

L 9058

Sketch plan

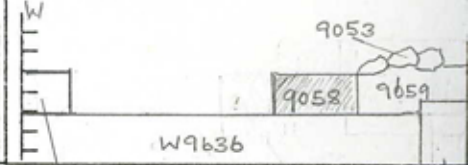


oto

Section



Section



L9052

9058

967