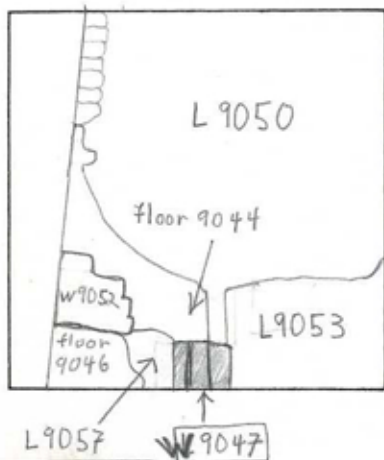


TEL DOR 1986 field 16 square A.I.3.1 phase (in sq.): LOCUS W1910.47

date opened 3.0/0.7/86 level 1.5.4.2 date closed 1.1/0.8/86 level 1.4.9.4 floor level - - - - - type of locus Wall of Xurkar blocks.

loci above 9.0.4.5, loci below 9.0.4.1^{DPW}, sealed by

graphic description



check (+or-) when closing locus:

- definition/ limits
- reason for closing
- relation to other elements
- working photos, nos: 1986.03.29-32
- publication photos 70.26.06
- architect's permission

final locus no. 1910.47 arch. unit/logical area stage (in sq.) final STRATUM

OPENED: During clearing of rubble in L9045, W9047 distinguished.

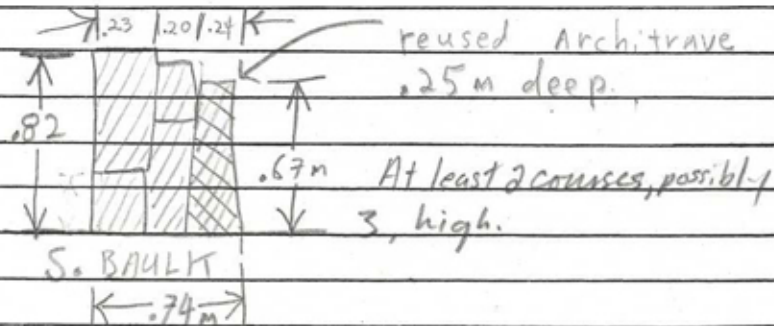
DEFINITION: To the south baulk; West to L9053; North-West to L9050; North-east to floor 9044; West to L9057. L9047 included the rubble locus L9057 until it was determined that the rubble was separate from the Xurkar wall. Consists of Xurkar blocks.

CLOSED: End of season. not closed (NB CLOSED 11.07.91. DPW)

RELATION: extends out from S baulk; reached rubble L9053; cuts floor [9046/9044]; relationship to pier 9058 unclear (possibly cut by east west wall of pier 9058).

Reaches rubble Locus L9057.

Matrix: cut Xurkar blocks:



(entered)

Locus W 9047	Dor 19 91	Fld 91	Sq AI31	Loc. type Kurkar wall Card 2.
Open Date 05/07/91	High at 1.5-3.5 SW	Low at 1.5-1.6 NW	Seals: 916411	Sealed by:
Close Date 11/07/91	1.4-9.14 NW	1.4-8.17 SW	Loci 91045	above
Floor: type	Width	Vol	Loci 916411	below
Length L. 0	Remove 11/07/91	Drawn? YES		
Photo #(1) 70310	Photo #(2) 70311			
Written by: J.P.W	Checked by: J.P.Z			

Unit	Phase	Stage	Stratum	PoM
------	-------	-------	---------	-----

Summary

Opened: See the 1986 locus card, W 9047 excavated in 1991.

Limits (N) 19621
 (S) Balk, L9047 does not penetrate the balk.
 (E) 19609
 (W) 19057

Closed: Removed when it was realized that W9047 floated and it was clear that it was not connected to another feature.

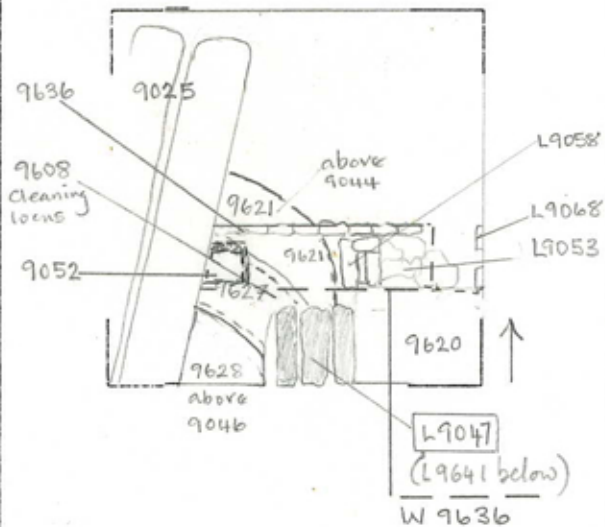
Matrix: Three ashlar blocks with a stone packing, east block is a re-use, inverted, and it could be a pilaster capital. The western blocks are larger in size, they are much weather kurkar worked stone.

Relations: W9047 is covered by L9045, W9047 covers seals and may cut 9641 below. To the north 9047 floats above the level of W9636. L9047 probably cuts the cobble floor of 9044 (=floormakeup in 9621) Other relations to the north are uncertain due to the poor state of the 1986 records. Since 9047 is the lowest course in a wall and hence foundational, it probably cuts earlier debris to the north. On the W. 9047 probably cuts the cobble floor of 9046 (=floor makeup of 9628) and possibly 9627 as well. Since 9047 is foundational it probably cuts the debris loci above 9046 as well. On the S. 9047 does not continue into the balk. If as discussed below, 9047 is a pier in a pier and rubble wall, it is possible that the rubble section is missing or was not preserved in AI31. On the east 9047 probably cuts 9620 and loci above 9620 excavated in 1986 because 9047 is foundational. 9047 may be part of a pier and rubble wall system which includes 9058, 9053, 9068 NE of 9047 and 9052 to the NW. 9047 is perpendicular to this wall line and may have made a T-junction with them. If so 9047 would have abutted the W9058 complex. The rubble section which would have connected 9052 with 9058 may have disappeared in the past, or not been recognized as a rubble wall section when that area was cleared.

Additional Observations/Value: Wall makeup included a molded architectural block and pottery which can date the structure. W 9047 completely seals L 9041.

LOCUS
W 9104:71

Sketch plan

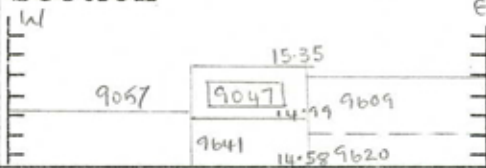


Photo



Photo

Section



Section

