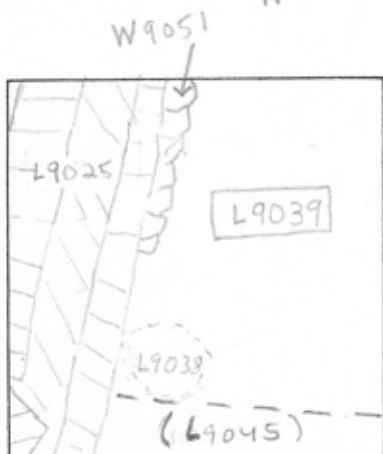


TEL DOR 19 86 field IG square A.I.3.1 phase (in sq.): LOCUS L19.0.3.9

date opened 0.7/0.4/8.6 level 1.5.5.0 date closed 0.7/2.8/8.6 level 1.5.1.3 floor level type of locus Fill; 1

loci above 9.0.3.4, 9.0.3.5, 9.0.2.3 loci below 9.0.4.4, 9.0.4.5 sealed by

graphic description N final locus no. arch. unit/logical area stage (in sq.) final STRATUM



OPENED: To excavate level below drain L9023 and to collapse loci L9035 with L9034 on either side of drain, L9023

DEFINITION: Consists of base fill in the north sector. Fill becomes harder and contains some kurkar in southern area. Extends to baulks in north, south and east. To west to L9025 and north-west to wall W9051.

CLOSED: Uncovered rubble L9045, technical change.

RELATION: Cut by L9038, a pit. L9044, the locus below, is a continuation of some matrix as L9039. L9039 reaches W9051. Drain L9025 cuts L9039.

photos

please check (+ or -) when closing locus:

- reason for opening
- definition/ limits
- reason for closing
- relation to other elements
- working photos, nos:
- publication photos
- architect's permission

Matrix - hard packed fill with rocks and potshards, greyish, speckled with bits of kurkar.

Alternate: At 15.35 in eastern baulk a 60 long fragment of kurkar floor ca. 0.06 thick, is visible. Its relationship to easternmost pier associated with pier and rubble wall of W9058 and W9052, sticking in baulk is unclear. It does not reach ^{the wall} in section. At 15.42 in the north east over

LOCUS

L19,0,39

BASKET LIST

basket no.	level	str def	cont	R + -	periods				comments
90234	1529	03	01	2	0	2			-
90238	1529	03	11						Bones
90239	1529	03	13						glass
90241	1529	03	13						miniature lamp
90248	1513	03	01	0					OS-02
90249	1513	03	11						bones
90250	1513	03	13						glass
90260	1513	03	04						bronze
90272	1506	03	01	1	1	2			OS-02; One horizontal Persian amphora handle kept.
90281	1506	03	11						bones
90284	1522	03	12						COIN
90285	1517	03	12						COIN
90286	1506								lead weight
90288	1506	03	15						glass
90290	1517	03	12						COIN
90294	1506	03	02	R					ETS (?)
90295	1506	03	05						iron lumps
90298	1506	03	01	-	05				stamped amphora handle
90303	1513	03	01	1	05	04			One handle, one blank
90304	1513	03	13						glass
90305	1513	03	11						bone
90314	1509	03	12						COIN
90315	1508	03	12						COIN
90316	1513	03	04						bronze
90321	1513	03	05						iron

corner, extending in north and east baulks, is another fragment of turbar floor. 0.3 cm. thick (part of same floor?). Both floors drawn in section.

