

Locus Card

DOR 2003

L 18903 *Area* G *Sq:* AJ- /33- *Loc. type:* fill and collapse
High at Low at *written by:* ebs created 27/07/2003
Open 15/07/2003 12.99 12.85 *checked by:* ebs updated: 29/07/2003
Close 23/07/2003 12.94 12.78 **Floor** 0.00
Length 2.10 width: 1.90 volume: Floor type (old)
Removed: Drawn? No

Integrity:

s

unit: -- *phase:* 9 *stage:* vi *stratum:* *PoM:*
summary:

Opened: a continuation of L9969 and L9968 (1993)

Limits (N) (baulk under??) W9211

(S) L9954

(E) W9140 and emerging W9140(L)

(W) baulk under L18900

Closed:

Matrix: highly heterogeneous matrix with more bricks and large brick fragments in NW and lenses of dark clay, orange "destruction debris," and ashy grey lenses in SE. The SE lenses slope down from NE to SW in a gentle curve as if dumped over a pre-existing mound. Patches of reed - either roofing or matting - were mixed in with mudbrick detritis.

Relations: To the E, this matrix covers the uppermost stones of L18916 and reaches the mud/clay facing of W9140(U). To the N and E of L18902, L18903 meets it in a straight line in the upper reaches and on the north, appears to continue under L18902.

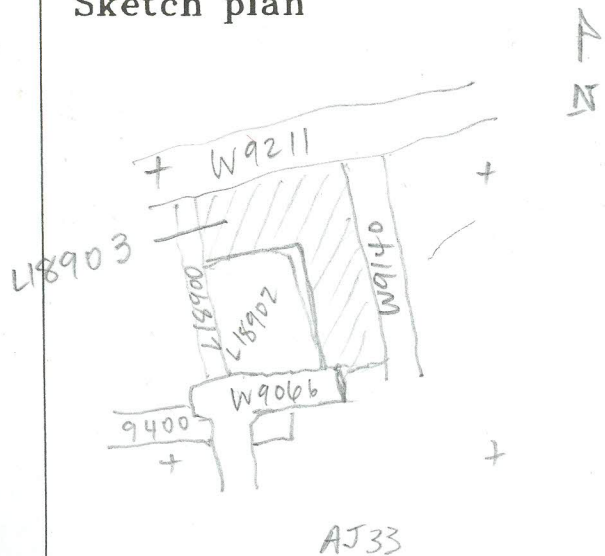
The southern and western extents of this "L-shaped" locus differed significantly, but no clear delineation was consistently possible. The relationship between this locus and L18902 was not consistent and so a twilight zone was maintained between the two. In some sections they seemed to meet at a vertical face, but in other sections the mudbrick material of L18903 seemed to underlie a receding L18902 (especially in the N of L18902). Lower down in L18903 larger mudbrick fragments lay in fallen angles. The limited area excavated of L18922 below revealed fallen roof beams and thatch (?). The contours of L18903 suggest benches against W9211 and 9140 or a robber trench (but why build stone walls parallel to existing earlier walls?). The N-S line of L18903 continues the line of the mudbrick wall W9915 of Phases 10 and 9, which is preserved in AJ-32.

Importance: Value derives from collapse of structure, yet mixed with intentional fill so limited value.

Images	L 18903	Related loci:	Features
d04Z3-3910	is_above	18915	
	is_below	9969	
	is_below	9968	
	is_above	18922	
	is_above	18916	

Locus
418903

Sketch plan



Photo

Photo

Section

Section