

Locus Card

DOR

18570

Area G

Sq: AH-AI/33-

Loc. type:

Open
Close

High at Low at

written by:
checked by:

created
updated: 18/02/2003

Floor
Floor 0.00

Length width: volume:
Removed: Drawn? No

Floor type (old)

Integrity:
s

unit: 18570 phase: 9 stage: xi stratum: PoM:
summary:

Opened:
Limits (N)
(S)
(E)
(W)

Closed:
Matrix:
Relations:

Importance:

Images

18570

Related loci:

Features

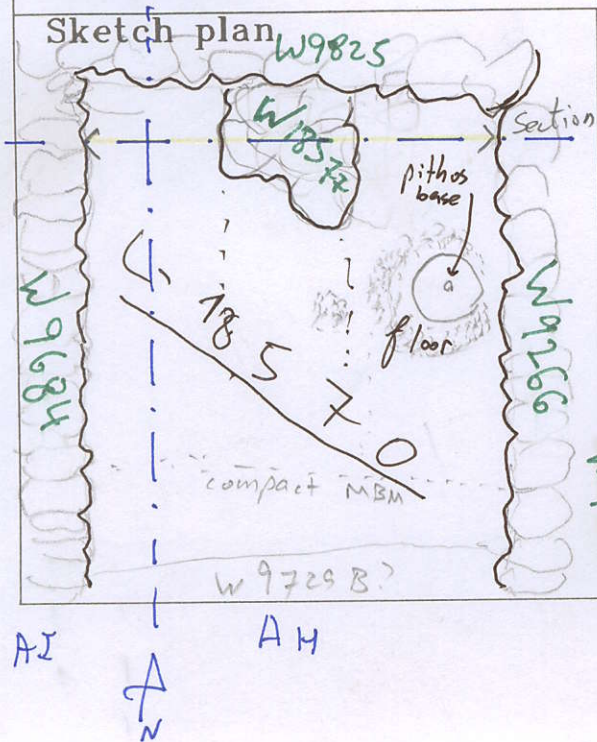
d03Z3-2572
d07Z3-0030
p08Z3-0111
p08Z3-0112
p08Z3-0113
p08Z3-0115
d09Z3-0613
d09Z3-0855
p09Z3-6031
d03Z3-2471
d03Z3-2472
d03Z3-2431
d03Z3-2507
d03Z3-3876
d03Z3-3648

Locus L 18570	Dor 20 ⁰⁰	Fld G ₁	Sq AY-AT33-34	Loc. type fill down to floor / burn layer!
Open	Date	High at	Low at	Seals: _____
Close	19/8/00	13.40 NE	13.24 E	Sealed by: 18563 _____
Floor: type	14/8/00	13.22 S	13.00 W	Loci _____
Length 4.20	Width 2.15	Vol _____	Drawn? <input checked="" type="checkbox"/>	above _____
Value S	Remove <input type="checkbox"/>			below _____
Photo #(1) _____	Photo #(2) _____			
Written by: NAT	Checked by: _____			
Unit _____	Phase _____	Stage _____	Stratum _____	PoM _____
Summary				
Opened: When F18563 has been removed				
Limits (N) W9852, W18577				
(S) W9729b				
(E) W9269 (or bank below it - it wasn't clear by the end of the season)				
(W) W9684				
Closed: Technical (End of Season) + Reading F18570				
Matrix: East of W18577: black-grey (ashy) soft soil with plenty of sherds, some big and restorable + coal				
West of W18577: light orange (burnt) soft soil				
Relations: L18570 is sealed by F18563, Adjacent to walls of Eastern room of the IA building.				
The soil of L18570 has indications of fire (soil's colors, ashes...) so it might be the destruction layer or a very big pit				
Taken for restorations were huge amounts of pithoi sherds (at least "wavy line" pithos), chalice, crater, decorated jars, cooking pots, phl sherd, bowls.				
One of the pithoi was found in situ, still on what remains of F18570-plaster thin floor.				
When we firm. were leveling the locus to the level of F18570, it was harder to define the face of mb W9729b (to the south) - it is wider than the face of wall we found above F18563 - it might indicate that the wall was burnt, or that it was wider.				
Additional Observations/Value: L18570 is fill between floors in the Eastern room of the IA building and maybe is a part of the destruction layer.				



Locus
 □ 18570

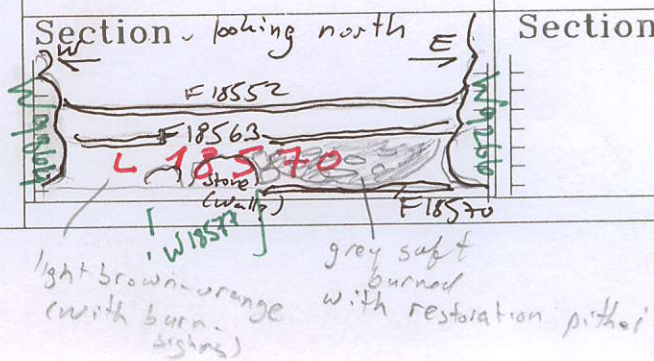
34 Sketch plan



Photo

Photo

Section - looking north



Section

light brown-orange (with burn signs)
 grey soft burned with restoration pithos