

Locus Card

DOR 2000

L 18511 *Area* G *Sq:* AI-AJ/33- *Loc. type:* Multiple susrface
High at Low at *written by:* WSB created 16/08/2000
Open 09/08/2000 11.35 n 11.05 sw *checked by:* EBS updated: 31/07/2001
Close 14/08/2000 11.45 n 11.05 sw **Floor**
Length 2.00 width: 1.70 volume: Floor type (old)
Removed: 14/08/2000 Drawn? No

Integrity:

s

unit: Hor. 3 *phase:* 11 *stage:* xii *stratum:* *PoM:*
summary:

Opened: L18486 and L18487 above were followed as part of a continous build-up. New loci were opened in an effort to follow this lower band of accumulated surfaces.

Limits (N) L18510

- (S) Excavated previously
- (E) Baulk under W18481
- (W) Baulk under W9140

Closed: Significant surface reached: tabun or furnace. Unexcavated. End of excavations

Matrix: Lenses and splays of ash, brown sandy dirt, sand, and plaster. Thick ash layers and carbonized remains downslope of extensive tabun fragments.

Relations: L18511 continues as L18480 to the S. The thick carbonized layer was easily traceable sloping down dramatically to the S and W.

- A very well preserved bronze/Cu alloy plow point was found on a plaster lense at high 11.07 m

Importance: high value - thick ash and carbonized remains associated with the tabun

Images	L 18511	Related loci:	Features
p05Z3-0696	is_below	18487	
p05Z3-0697	sealed_by	18487	
p05Z3-0678			
p05Z3-0679			
d08Z3-2005			
p08X-1203			
p08X-1204			
D08X-1106			

Locus L18511	Dor 20 00	Fld G1	Sq A.I.I.A.I. 331	Loc. type Multiple surface accumulation
Open Date 09/08/00	High at 11.45 N1	Low at 11.05 SW	Seals: _____	Sealed by: 18487
Close Date 14/08/00	11.45 N1	11.05 SW	Loci above 18487	_____
Floor: type _____	Width 1.70	Vol _____	Loci below _____	_____
Length 2.00	Remove 14/08/00	Drawn? N1	_____	_____
Value S1	Photo #(1) _____	Photo #(2) _____	_____	_____
Written by: HEB	Checked by: EBS	_____	_____	_____

Unit _____	Phase II	Stage _____	Stratum _____	PoM _____
------------	----------	-------------	---------------	-----------

Summary _____

Opened: L18486 + L18487 above were followed as part of a continuous build-up. New loci were opened in an effort to follow this lower band of accumulated surfaces.

Limits (N) L18510
 (S) _____ Excavated previously.
 (E) Bank under W18481
 (W) Bank under W9140.

Closed: Significant surface reached: tabun or furnace. Unexcavated. End of excavations.

Matrix: lenses + splays of ash, brown sandy dirt, sand, + plaster. Thick ash layers + carbonized remains downslope of extensive tabun fragments.

Relations: L18511 continues as L18480 to the south. The thick carbonized layer was easily traceable sloping down dramatically to the SW.

- a very well-preserved bronze/Cu alloy plow point was found on a plaster lense at @ 11.07m.

Additional Observations/Value: high value - thick ash + carbonized remains associated with a tabun.

193436



193437



193460

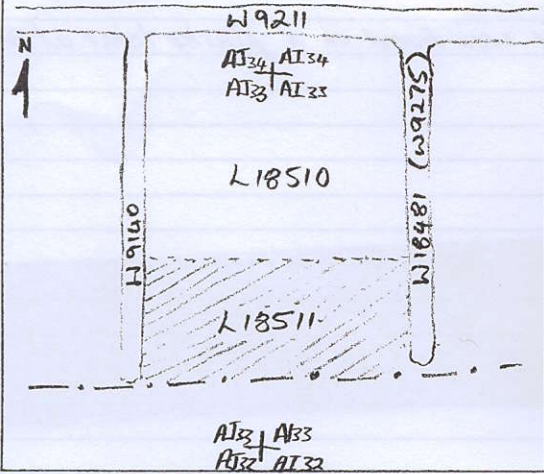


193459



Locus
L 18511

Sketch plan



Photo

193454



Section

