

Locus Card

DOR 2000

L 18509 *Area* G *Sq:* AI- /33- *Loc. type:* Plastered floor make-up
High at Low at *written by:* WSB created 13/08/2000
Open 09/08/2000 12.95 s 12.89 e *checked by:* EBS updated: 13/08/2000

Close
Length 1.10 width: 0.85 volume: Floor type (old)
Removed: Drawn? Yes

Integrity:

i

unit: 10 *phase:* 10b *stage:* xii *stratum:* *PoM:*
summary:

Opened: Plastered floor make-up.

Limits (N) L18524

(S) W18514

(E) L18525

(W) W18515

Closed: Removing wall W9961 and its FT (L18522, L18523, L18524) revealed greater extent of floor plaster.

Matrix: Not excavated - but plastered kurkar surface.

Relations: L18509 = L18517 (which includes portion preserved under W9961 with its FT L18522, L18523 and L18524).

See card for W18503 for Phase 10 subphases.

- This flooring, laid as the original floor for walls W18514 and W18515 (Phase 10) was cut by Phase 9 walls and their FT - on the N; by the FT (L18524 and L18523) for W9961, and on the E by the FT L18525 for wall W9684.

- The FT L18527 for W18515 in turn cut floors L18512.

Importance: Medium value - Phase 10 floor make-up cut by Phase 9 wall FTs.

Images	L 18509	Related loci:	Features
p05Z3-0678	is_above	18517	
p05Z3-0679	is_below	18449	

Locus L 18509		Dor 20 00	Fld G	Sq AT 33	Loc. type Plastered floor make-up.
Open	Date 09/08/00	High at 12.95	at S	Low at 12.89	at E
Close	Date 09/08/00	High at 12.95	at S	Low at 12.89	at E
Floor: type					
Length	1.10	Width 0.95		Vol	
Value	i	Remove	/ / /	Drawn?	YES
Photo #(1)		Photo #(2)		Loci 1,8449	above
Written by: W.S.B.		Checked by: E.B.S.		Loci 1,8517	below
Unit	Phase	Stage	Stratum	PoM	
Summary					
Opened: plastered floor make-up.					
Limits (N) L18524					
(S) W18514					
(E) L18525					
(W) W18515					
Closed: removing wall W9961 + its FT (L18522, L18523, L18524) revealed greater extent of floor plaster. Additional section of floor plaster exposed as L18517. F18509 not removed					
Matrix: Not excavated - but plastered kurkar surface.					
Relations: L18509 = L18517 (which includes portion preserved under W9961, with its FT L18522, L18523 + L18524).					
see card for W18503 for Ph. 10 subphases.					
- this flooring laid as the original floor for walls W18514 + W18515 ^(Ph. 10) was cut by ^{have 9 walls + their FT} on the north by the FT (L18524 + L18523) for W9961, + on the east by the FT L18525 for wall W9684.					
- the FT L18527 for W18515 in turn cut floors L18512.					
Additional Observations/Value: med valve - Ph 10 floor make-up cut by Ph. 9 wall FTs.					



193472

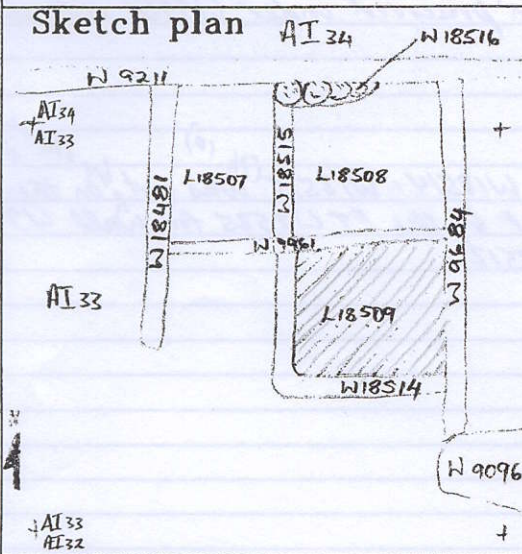


193478



Locus
LI 18509

Sketch plan



Photo

Photo

Section

Section

