

Locus Card

DOR 2000

L 18501 *Area* G *Sq:* AJ- /32- *Loc. type:* Outdoor subsidence or wash
High at Low at *written by:* WSB created 13/08/2000
Open 04/08/2000 10.81 w 10.71 s *checked by:* EBS updated: 13/08/2000
Close 11/08/2000 10.78 s 10.68 w **Floor**
Length 2.50 width: 2.00 volume: Floor type (old)
Removed: 11/08/2000 Drawn? No

Integrity:

u

unit: --- *phase:* 11b *stage:* xii *stratum:* *PoM:*
summary:

Opened: The matrix is similar to L18455 above, but with less sand patches and lenses, and without the large sherds and bones.

Limits (N) L18475, L18485

(S) Bulk under Roman cardo L9000

(E) excavated 1999

(W) Bulk under staircase.

Closed: Mud and sand matrices removed. Clean multiple surface material below.

Matrix: Mud and sand patches in homogeneous brown matrix.

Relations: L18501 and L18455 above are a similar matrix - clearly a highly disturbed deposit, though L18501 has fewer and smaller sherds and bones. To the N, this locus appears to have slipped / washed down over the intact multiple surfaces of L18475 and L18497. Chunks of multiple surfaces, tipped and toppled, lay in L18501.

Restore pottery with L18455 and L18450. See note on L18450.

Importance: High value - restorable pottery from Ph 10 - Iron Ia

Images	L 18501	Related loci:	Features
	is_below	18455	

Locus L 18501	Dor 20 00	Fld G ₁	Sq A, J 32	Loc. type outdoor subsidence or wash
Open 04/08/00	High at 10.81	Low at 10.71	Seals: _____	
Close 11/08/00	10.78	10.68	Sealed by: _____	
Floor: type _____			Loci 18455	
Length 2.50	Width 2.00	Vol _____	above _____	
Value d ₁	Remove 11/08/00	Drawn? No	below _____	
Photo # (1) _____	Photo # (2) _____			
Written by: W.S.B	Checked by: E.B.S			

Unit _____	Phase _____	Stage _____	Stratum _____	PoM _____
-------------------	--------------------	--------------------	----------------------	------------------

Summary _____

Opened: the matrix is similar to L18455 above, but with less sand patches + lenses, + without the large sherds + bones.

Limits (N) L18475, L18485

(S) baulk under Roman cardo L9020.

(E) exc. 1999

(W) baulk under staircase.

Closed: Mud and sand matrices removed. Clean multiple surface material below.

Matrix: mud + sand patches in homogeneous brown matrix

Relations: L18501 and L18455 above are a similar matrix - clearly a highly disturbed deposit, though L18501 has fewer + smaller sherds + bones. To the north, this locus appears to have slipped/washed down over the intact multiple surfaces of L18475 + L18497. Chunks of multiple surfaces, tipped + toppled, lay in L18501.

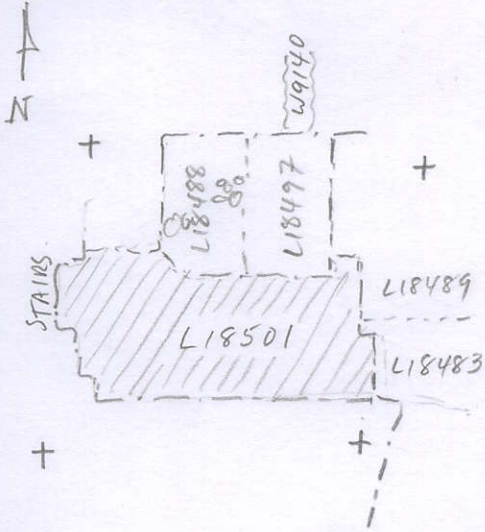
Restore pottery of L18455 and L18450. see note on L18450.

Additional Observations/Value: high value - restorable pottery from Ph 10 - Iron Ia.

Locus

L 18591

Sketch plan



Photo

Photo

Section

Section

