

Locus Card

DOR 2000

L 18498 *Area* G *Sq:* AI- /32- *Loc. type:* fill in pit
High at Low at *written by:* WBS created 15/08/2000
Open 03/08/2000 9.30 e 9.28 w *checked by:* EBS updated: 15/08/2000
Close 09/08/2000 8.73 ne 8.62 nw **Floor**
Length 2.30 width: 0.70 volume: Floor type (old)
Removed: 09/08/2000 Drawn? No

Integrity:

u

unit: Hor. 1 *phase:* 12 *stage:* xv *stratum:* *PoM:*
summary:

Opened: 2 distinct loci distinguished within L18484 to L18498 (N) and L18500 (S)

Limits (N) N baulk of 1999 test trench

(S) L18500

(E) extent of 1999 test trench

(W) extent of 1999 test trench

Closed: bottom of pit reached, L18500 extends across entire test trench

Matrix: Reddish brown matrix with burnt mudbrick chunk, sand lenses and scattered stones

Relations: Tip lines indicate L18498 was dumped into a depression from L18500 to the S. It is evident in the section that L18484 above also consisted of these 2 loci, a fill to the S (L18500) and dump to the N (L18498).

L18500 has crept northward, until L18498 ceased to exist.

The opening elevations cited are from the point at which we differentiated L18498 from L18500.

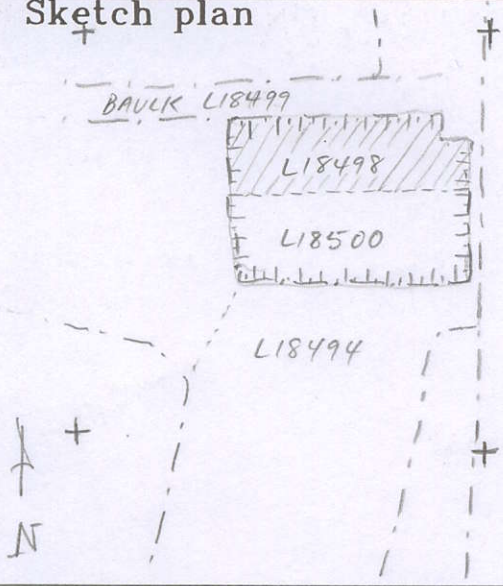
As visible in the section drawing, the top of the pit was closer to 10.50 in the SE corner

Importance: med value-very large LB pit

Images	L 18498	Related loci:	Features
d08Z3-3006	is_above	18500	
d09Z3-2013	is_below	18484	

Locus
L 18498

Sketch plan



Photo

Photo

Section

Section

