

# Locus Card

DOR 2000

L 18494      *Area* G      *Sq:* AI- /32-      *Loc. type:* outdoor deposit  
High at Low at      *written by:* WSB      created 12/08/2000  
Open 02/08/2000 10.90 e 10.79 se      *checked by:* ESB      updated: 12/08/2000  
Close 07/08/2000 10.72 e 10.62 w      **Floor**  
Length 2.70 width: 1.60 volume:      Floor type (old)  
Removed: 07/08/2000      Drawn? No

Integrity:

u

*unit:* Hor. 3      *phase:* 11

*stage:* xiv

*stratum:*

*PoM:*

*summary:*

**Opened:** Sandy matrix below pedestal of same material (L18493) and multiple surfaces L18446 and L18447.

**Limits (N)** 1999 test trench.

(S) L18467

(E) L18468

(W) baulk under Roman cardo L9000.

**Closed:** Not completed at end of excavation season.

**Matrix:** Sandy matrix with horizontal sandy lenses.

**Relations:** L18493=L18494=L18420 (1999 test trench). This locus was sample sifted (hand-picked and dry sieve with fine mesh) to obtain a comparative LBA sample. This locus was sample sifted (hand-picked and wet sieve) to obtain a comparative LBA sample.

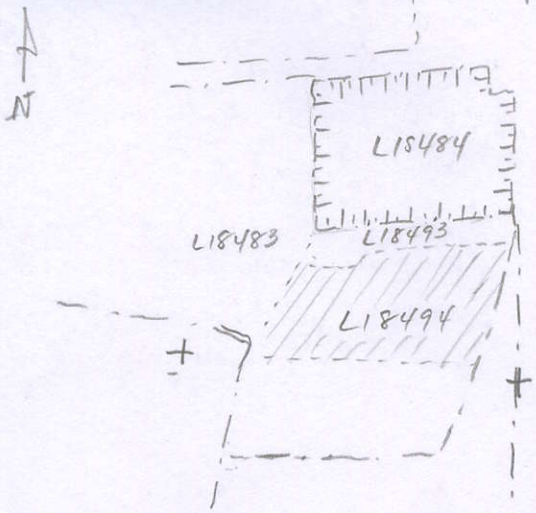
Hyksos scarab.

**Importance:** High value - sifted LBA deposit. LB pottery with many Mycenaean and Cypriot imports.

Images	L 18494	Related loci:	Features
d05Z3-0093	is_below	18446	
p09Z3-6069	sealed_by	18446	
p09Z3-6072	is_below	18447	
p09Z3-6073			
p09Z3-6074			
p09Z3-6075			
p09Z3-6076			
d09Z3-2027			
p09Z3-6128			
d03Z3-3071			
d03Z3-3074			
p10Z3-0109			

Locus  
L 18494

Sketch plan+



Photo

Photo

Section

Section

