

Locus Card

DOR 2000

L 18489 *Area G* *Sq:* AI-AJ/32- *Loc. type:* Outdoor deposit
High at Low at *written by:* WSB created 15/08/2000
Open 01/08/2000 10.90 s 10.82 e *checked by:* EBS updated: 15/08/2000
Close 07/08/2000 10.86 e 10.70 w **Floor** 10.86 e 10.70 w
Length 2.65 width: 190.00 volume: Floor type (old)
Removed: 07/08/2000 Drawn? No

c

Integrity:

u

unit: Hor. 3 *phase:* 11

stage: xiv

stratum:

PoM:

summary:

Opened: The multiple surfaces of L18452 were removed revealing this sandy outdoor deposit.

Limits (N) Bulk

(S) L18483

(E) Test trench

(W) Bulk

Closed: While the locus was closed with the removal of a distinctive ash layer from L18483 to the S, this matrix continues below.

Matrix: Clean brown layers with thin bluish grey intermittent bands. One burned patch and lensing out of ashy deposit to S and W.

Relations: Scarab at elevation 10.84 found beside NE corner of exposed burned patch. E Stern identified the scarab with a griffin\cherub as an Iron I local production.

- central section of LB plaque figurine showing woman's bent arms with arms clutching breasts
- bronze tang/pin

In the western section of the 1999 test trench, the matrix of L18489 continues down for 15 to 20 cm above a distinctive fill layer with burnt brick fragment and charcoal chunks. Just to the other side of

a

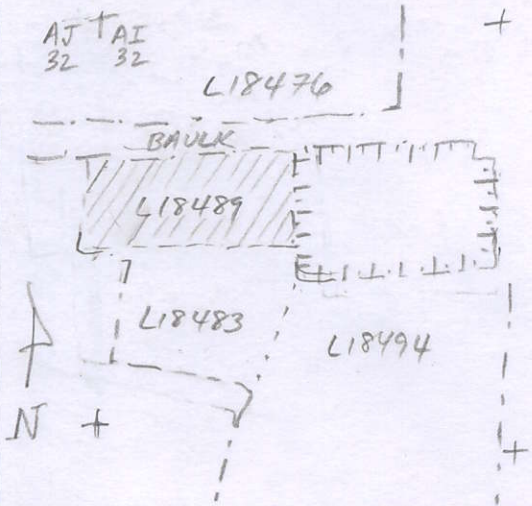
40 cm wide bulk bordering the northern edge of this locus, the deposition sequence is completely different. No indication of outdoor deposit or the fill with burnt material. Instead the characteristic multiple surfaces continue for about another 40 cm.

Importance: high value-scarab and female figurine. LB Pottery

Images	L 18489	Related loci:	Features
d09Z3-1214	is_below	18452	
d15Z1-0062	is_below	18464	

Locus
L 18489

Sketch plan



Photo

Photo

Section

Section

