

# Locus Card

DOR 2000

L 18487      *Area* G      *Sq:* AI-AJ/33-      *Loc. type:* multiple surface  
 High at Low at      *written by:* WSB      created 12/08/2000  
 Open 31/07/2000 11.94 ne 11.67 se      *checked by:* EBS      updated: 13/08/2000  
 Close 09/08/2000 11.45 n 11.05 sw      **Floor** 11.45 n 11.05 sw  
 Length 2.65 width: 1.81 volume:      Floor type (old)  
 Removed: 09/08/2000      Drawn? No

c

Integrity:

s

*unit:* Hor. 3      *phase:* 11      *stage:* xii      *stratum:*      *PoM:*  
*summary:*

**Opened:** The exposed plaster surface is the continuation of L18472 = L18497 to the SW.

**Limits (N)** L18486

(S) material excavated 1999

(E) baulk under W18481

(W) baulk under W9140.

**Closed:** L18487 was part of a continuous build-up traced across the excavation area. It was closed when the next traced surface (L18511) was reached.

**Matrix:** Multiple surfaces and lenses of ashy material, clean brown dirt, sand and plaster.

**Relations:** The plaster surface extend northward into the brown sandy matrix of L18486, with no discernable fixed boundary between the two. The sloping surfaces of L18487 are likely dumped from the flat-lying L18486.

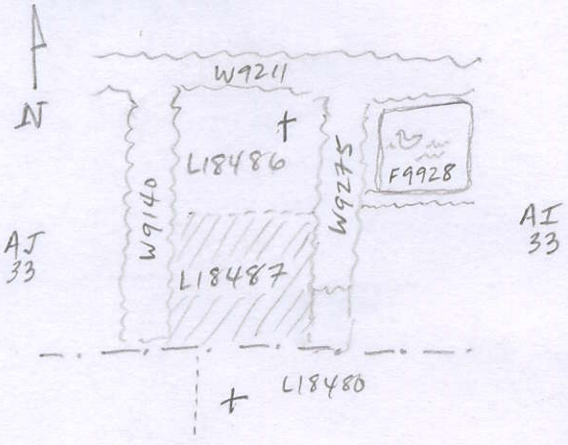
L18487 is the NE extension of L18472=L18497, but also L18444, L18452, L18391 and L18431 to the south. Dumping down the slope resulted in a thinner deposit uphill with a greater build-up downslope. See section 'drawing' for L18486.

**Importance:** Medium value - sealed portion of continuous surface in multiple surface accumulation: LB pottery.

Images	L 18487	Related loci:	Features
d03Z3-3131	is_above	18511	
d03Z3-3087	is_below	18453	
d03Z3-3047	sealed_by	18453	
d03Z3-3833	Seals	18511	
	is_below	18458	
	is_above	18510	

Locus  
L 18487

Sketch plan



Photo

Photo

Section

Section

