

Locus Card

DOR 2000

L 18474 *Area G* *Sq:* AI- /32- *Loc. type:* Section straightening
High at Low at *written by:* WSB created 11/08/2000
Open 25/07/2000 10.44 w 10.44 e *checked by:* EBS updated: 11/08/2000
Close 26/07/2000 10.08 e 10.08 w **Floor**
Length 1.30 width: 0.30 volume: Floor type (old)
Removed: 26/07/2000 Drawn? No

Integrity:

u

unit: --- *phase:* 12 *stage:* xv *stratum:* *PoM:*
summary:

Opened: Section straightened to maintain full extent of test trench.

Limits (N)

(S)

(E)

(W)

Closed: Reached the working level below (L18479)

Matrix:

Relations: Straightening the northern section in 1999 test trench. According to the Area G East baulk drawing, the material was from L18415 and L18420.

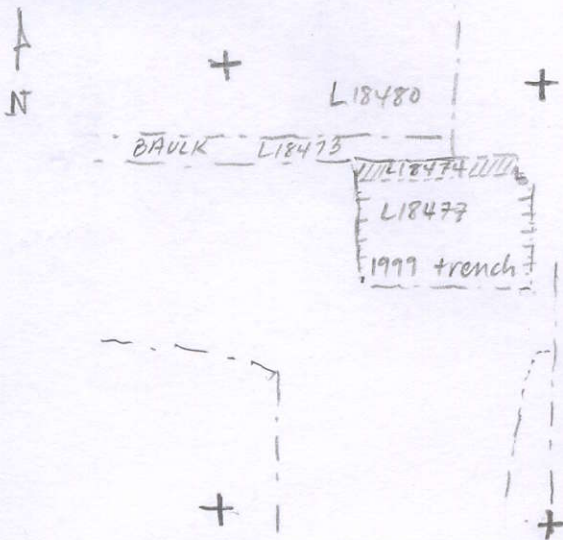
Importance: Low value - limited extent and two loci mixed.

Images	L 18474	Related loci:	Features
	is_above	18479	
	is_below	18405	

Locus

L 18474

Sketch plan



Photo

Photo

Section

Section