

Locus Card

DOR 2000

L 18473 *Area* G *Sq:* AI- /32- *Loc. type:* Baulk removal
High at Low at *written by:* WSB created 11/08/2000
Open 24/07/2000 11.46 e 11.32 w *checked by:* EBS updated: 11/08/2000
Close 24/07/2000 11.31 w 11.29 e **Floor**
Length 2.00 width: 0.50 volume: Floor type (old)
Removed: 24/07/2000 Drawn? No

Integrity:

s

unit: Hor. 3 *phase:* 11 *stage:* xiv *stratum:* *PoM:*
summary:

Opened: To avoid a high standing baulk.

Limits (N) L18418 (1999), L18440, L18444, L18480

(S) 1999 test trench

(E) Baulk

(W) Already at a lower elevation - only higher eastern portion excavated.

Closed: Reached at more practical height for the baulk.

Matrix: Mixed loci from 1999 excavation.

Relations:

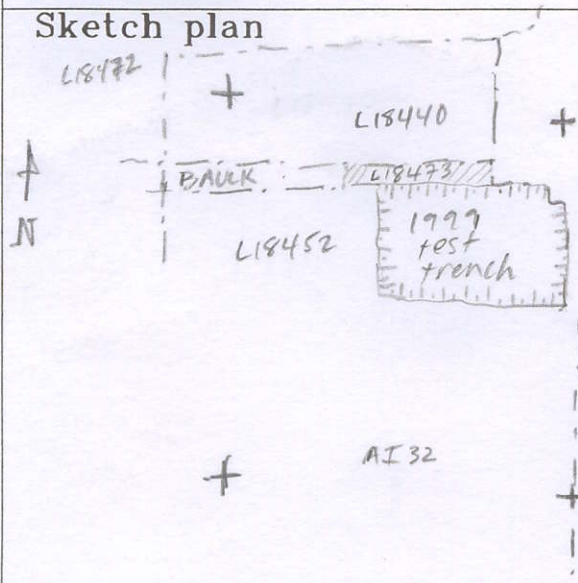
Importance: Low value - baulk, though sealed. Transitional LB/IA pottery.

Images	L 18473	Related loci:	Features
	is_above	18499	
	is_below	18229	
	sealed_by	18229	

Locus

L 18473

Sketch plan



Photo

Photo

Section

Section

