

Locus Card

DOR 2000

L 18466 *Area* G *Sq:* AJ- /32-33 *Loc. type:* Fill or mudbrick collapse
High at Low at *written by:* WSB created 29/07/2000
Open 21/07/2000 11.51 se 11.46 n *checked by:* EBS updated: 29/07/2000
Close 25/07/2000 11.51 nw 11.41 s **Floor** 0.00
Length 1.40 width: 1.20 volume: Floor type (old)
Removed: 25/07/2000 Drawn? No

Integrity:

u

unit: --- *phase:* 11b *stage:* xii *stratum:* *PoM:*
summary:

Opened: Stone lines below L18451 divided the compact reddish-brown matrix into discrete units. L18466 is in the NW corner.

Limits (N) Bulk under W9400

(S) E-W stone "line" parallel to wall W18463

(E) W18471

(W) Bulk under W9065

Closed: Came down on shells of floor make-up of F18470.

Matrix: Compact reddish-brown matrix.

Relations: Compact reddish-brown material identified as wall / roof fall in 1999:

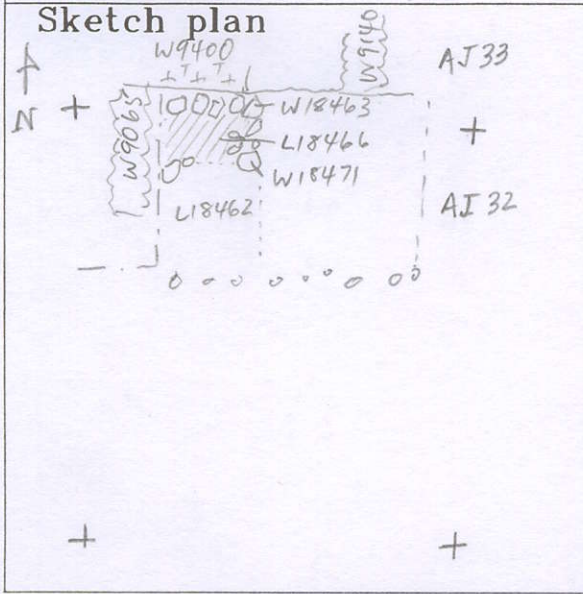
L18466 = L18462 = L18451 = L18448 = L18393 ('99) =? L18306 ('99) = L18470.

See drawings on the L18462 card.

Importance: Medium value - limited exposure, but discrete locus with moderate amount of pottery associated with the installation F18470.

Images	L 18466	Related loci:	Features
	is_above	18470	
	is_below	18451	

Locus
L 18466



Photo

Photo

Section

Section