

Locus Card

DOR 2000

L 18456 *Area* G *Sq:* AI- /32- *Loc. type:* Multiple surface
High at Low at *written by:* WSB created 29/07/2000
Open 18/07/2000 11.27 nw 11.10 s *checked by:* EBS updated: 11/08/2000
Close 19/07/2000 11.10 e 11.01 n **Floor** 0.00
Length 2.50 width: 0.40 volume: Floor type (old)
Removed: 19/07/2000 Drawn? No

Integrity:

u

unit: Hor. 3 *phase:* 11 *stage:* xiv *stratum:* *PoM:*
summary:

Opened: Walkway brought down to bottom of L18445 directly to N.

Limits (N) L18445

(S) Baulk under Roman cardo.

(E) L18437

(W) Baulk

Closed: Reached bottom elevation of L18445 to N. New locus # assigned to expanded extent. (L18452)

Matrix: Horizontal layers of light brown sandy matrix, ashy grey matrix with pieces of charcoal and patches of ephemeral plaster surfaces.

Relations: [L18456 = L18445] = L18452 (the expanded extent below the two loci. This same matrix continues as L18444 to the N and L18430 and L18437 to the E. See topplan attached to L18437.

Aggregate of multiple surfaces form a sealed deposit.

Based on the pottery reading it is possible this locus is also affected by the subsidence to the E and W which 'introduces' later Iron Ia pottery.

- A bronze blade with bone handle (?) was uncovered while trimming the southern baulk (at a height of 11.18m)

- See note on photos in L18436.

Importance: Medium value - pottery reading transitional LB/Iron I OR Iron Ia.

Images	L 18456	Related loci:	Features
d09X-0060	is_above	18452	
	is_below	18436	
	Seals	18452	

192228



192227



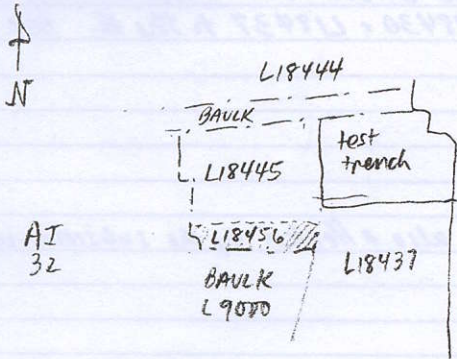
192229



Locus

L 18456

Sketch plan



Photo

Photo

Section

Section

