

# Locus Card

DOR 2000

L 18438      *Area* G      *Sq:* AI-AJ/33-34      *Loc. type:* Cleaning of multiple  
High at Low at      *written by:* WSB      created  
Open 12/07/2000 12.00 e 11.85 w      *checked by:* EBS      updated: 05/08/2000  
Close 13/07/2000 11.90 sw 11.29 w      **Floor** 0.00  
Length 4.64 width: 2.00 volume:      Floor type (old)  
Removed: 13/07/2000      Drawn? No

Integrity:

s

*unit:* Hor. 4      *phase:* 11      *stage:* xii      *stratum:*      *PoM:*  
*summary:*

**Opened:** Cleaning below winter plastic sheeting to clarify locus.

**Limits (N)** Baulk below wall W9211

(S) Excavated in previous seasons

(E) Baulk below wall W9275

(W) W9140

**Closed:** Matrix below plastic sheeting clearly delineated.

**Matrix:** Plastered surface patches (ephemeral to .01m thick), ashy lenses, sandy lenses, burning installations poorly preserved, mudbrick detritis and clean compact brown matrix. Brown matrix along E third of area, burning to W; sloped down towards W. Higher sand concentration and less ash in NW third.

**Relations:** In retrospect, this locus was cut hypothetical foundation trench L18469 for W9140 to the W.

- to E: more clean, compact brown matrix; lenses lie horizontally.
  - to W: more ash and charcoal; lenses slope down to W.
  - to N: more sandy lenses.
  - in SW: patch of matrix burnt orange-red (oval; approx 20cm long)
- Baskets 186269-71, 186274-6 likely belong with L18443 below.

**Importance:** Medium value. Stratified material immediately below plastic sheeting.

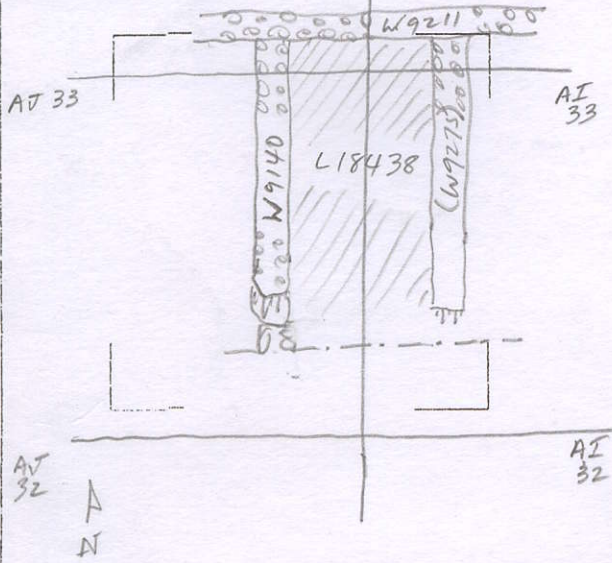
Images	L 18438	Related loci:	Features
	is_above	18443	
	is_below	19369	

LOCUS

L 18438

Sketch plan AJ34

AI34



Photo

Photo

Section

Section

