

Locus L 18308	Dor 1917	Fld 6	Sq 1132	Loc. type Tannur
Open Date 05/08/97	High at 12.18 N	Low at 12.08 W	Seals: _____	
Close Date 08/08/97	12.18 N	12.08 W	Sealed by: _____	
Floor: type Length 0.8	Width 0.8	Vol _____	Loci 18289	
Value 1.5	Remove ___/___/___	Drawn? Yes	above _____	
Photo #(1) See Isra	Photo #(2)	Loci _____	below _____	
Written by: JFM	Checked by: J.R.Z			

Unit _____	Phase _____	Stage _____	Stratum _____	PoM _____
------------	-------------	-------------	---------------	-----------

Summary _____

Opened: While clearing off F18289, in a partially damaged area we noticed the floor covering of a tannur. Assigned L18308

Limits (N) None
(S) None
(E) None
(W) None

Closed: Not closed

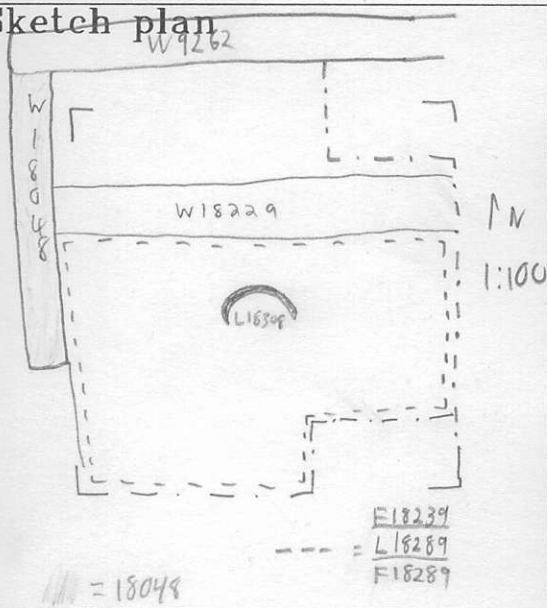
Matrix: Ceramics + Tannur material

Relations: Above: L18289 seals [L18308]
No other relationships at this time
The ashy white floor material of F18289 covers parts of the walls of [L18308]. It is possible that the tannur sits on one of the earlier surfaces of F18289 (of which there are at least 4). Further excavation required.

Additional Observations/Value: High Feature.

Locus
 4 18308

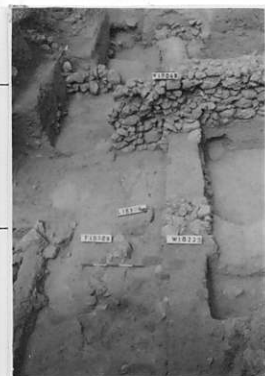
Sketch plan



143678



143677



167626



167631



167629



167627

Locus L18308 **Dor** 1998 **Fld** G1 **Sq** A132 **Loc. type** FURNACE? (CONTINUATION CARD)
Date 13/07/98 **High** at 1.2.17 M **Low** at 1.2.03 S
Open 13/07/98 **Close** 04/08/98 **Width** 0.7 F **Remove** 04/08/98 **Drawn?** YES
Floor: type _____ **Length** 0.7 F **Value** 1.1.612 S
Loci 18282 above
Seals: _____
Sealed by: 18282
Photo # (1) 175498 **Photo # (2)** 175499
Written by: K.V. **Checked by:** J.R.Z.

Unit	Phase	Stage	Stratum	POM

Summary

Opened: START OF THE SEASON / WE WENT THROUGH F18289 AND DISCOVERED MORE OF THE FURNACE-EDGES

Limits (N)
 (S) L18289, L18323, L16329, L18326, L18348
 (E) _____
 (W) _____

Closed: L18348 CAME DOWN AROUND THE FURNACE TO THE BOTTOM LEVEL OF ITS INSIDE AND WE DECIDED TO REMOVE IT

Matrix: ^{Furnace jar body} F.T.: CONSISTS OF BROWN SOIL (5-15 cm THICK) AND TOWARDS THE BOTTOM WERE BIG SHERDS * APPEARING AS SANDY HUBDRICKS AS SUPPORT FOR THE FURNACE EDGES. THE VERY BOTTOM OF THE F.T. CONSISTS OF A SINGLE RING OF FIST-SIZE STONES. IN THE SOUTH THERE WAS A DEPRESSION (BOWL-SHAPED TOWARDS A HOLE (10 BY 5 CM) IN THE FURNACE EDGES (BOTTOM) THIS DEPRESSION WAS ALSO LINED BY SHERDS. A COMPLETE JUGLET WAS FOUND IN THIS DEPRESSION

Relations: THE (FURNACE EDGES) WERE BUILT OUT OF ROUGH CERAMIC MATERIAL AND WERE BLACK (± 3 CM THICK). IN THE SOUTH THERE WAS A HOLE IN THE BOTTOM (10 BY 5 CM). (FURNACE WAS SENT FOR RESTORATION)
 THE (FILL) CONSISTS OF DARK BROWN SAND, SOME GREY HUBDRICK FRAGMENTS AND TOWARDS THE BOTTOM RED, GREY, BROWN, YELLOW AND PURE WHITE SAND AND ORGANIC MATERIAL PLUS CHARCOAL FRAGMENTS. 4.5 BUCKETS OF FURNACE-EDGES WERE COLLECTED (SEVERAL SOIL SAMPLES WERE TAKEN, FILL WAS UNTESTED)
 BETWEEN [L18308] AND W18289 (± 10 cm WIDE) THERE WAS A SOFT ASHY LAYER (± 25 cm THICK, 1.1 M LONG) = WASTE FROM INSIDE THE FURNACE? (POSSIBLE EXPLANATION FOR FRY IN L18289)
 * SOME POSSIBLE CRUCIBLE FRAGMENTS?

RELATIONS: ABOVE: L18308 IS SEALED BY 18289

Summary

Opened: START OF THE SEASON / WE WENT THROUGH F1889 AND DISCOVERED MORE OF THE FURNACE-EDGES

Limits (N)
 (S) L 18289, L 18323, L 18329, L 18336, L 18348
 (E)
 (W)

Closed: L 18348 CAME DOWN AROUND THE FURNACE TO THE BOTTOM LEVEL OF ITS INSIDE AND WE DECIDED TO REMOVE IT

Matrix: FURNACE FURNACE TRENCH CONSISTS OF BROWN SOIL (5-15 cm THICK) AND TOWARDS THE BOTTOM THE BOTTOM WERE BIG ^{STORAGE JAR BODY} SHERDS * APPEARING, AS WELL AS SANDY MUDBRICKS AS SUPPORT FOR THE FURNACE EDGES. THE VERY BOTTOM OF THE F.T. CONSISTS OF A SINGLE RING OF PISTON STONES. IN THE SOUTH THERE WAS A DEPRESSION (BOWL-SHAPED TOWARDS A HOLE (10 BY 5 CH) IN THE FURNACE EDGE (BOTTOM) THIS DEPRESSION WAS ALSO

Relations: LINED BY SHERDS. A COMPLETE JUGLET WAS FOUND IN THIS DEPRESSION THE FURNACE EDGES WERE BUILT OUT OF ROUGH CERAMIC MATERIAL AND WERE BLACK (7.3 CH THICK). IN THE SOUTH THERE WAS A HOLE IN THE BOTTOM (10 BY 5 CH). (FURNACE WAS SEAT FOR RESTORATION) THE FILL CONSISTS OF DARK BROWN SAND, SOME GREY MUDBRICK FRAGMENTS AND TOWARDS THE BOTTOM RED GREY BROWN, YELLOW AND PURE WHITE SAND AND ORGANIC MATERIAL PLUS CHARCOAL FRAGMENTS. 15 BUCKETS OF FURNACE EDGES WERE COLLECTED (SEVERAL SOIL SAMPLES WERE TAKEN, FILL WAS METRIFIED) BETWEEN [L 18308] AND W 18889 (± 10 cm WIDE). THERE WAS A SOFT ASHY LAYER (± 25 cm THICK, 1 M LONG) = WASTE FROM INSIDE THE FURNACE? (POSSIBLE EXPLANATION FOR FY IN L 18329) * SOME POSSIBLE CRUCIBLE FRAGMENTS?

Relations: ABOVE: [L 18308] IS SEATED BY 18889
 BELOW: [L 18308] (WAS BUT DOES NOT SEEM) L 18359

TO THE NORTH, SOUTH, EAST AND WEST: [L 18308] CUTS L 18323, L 18329, L 18336 AND L 18348
 THE FURNACE WAS NOT IN USE IN L 18289 AND L 18323 IS THE FIRST TO BE CUT BY THE FURNACE (L 18308) WAS IN USE IN L 18323? The furnace was most likely installed some time about when the ash layers of L 18323 were created. Since these ash layers are not continuous flames across the space in which the furnace was found it is impossible to be precise regarding which of these many ash layers the furnace belongs to.
 PHOTOS: 175497, 175302-309, 175849-843

Additional Observations/Value: HIGH VALUE

175243



175515

175307



175242



175305



175309



175303

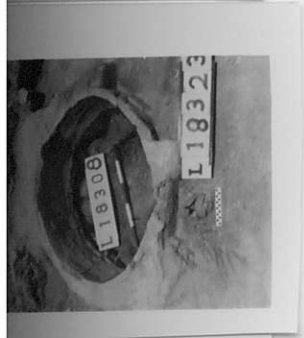


175306



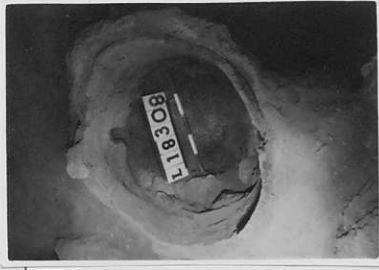
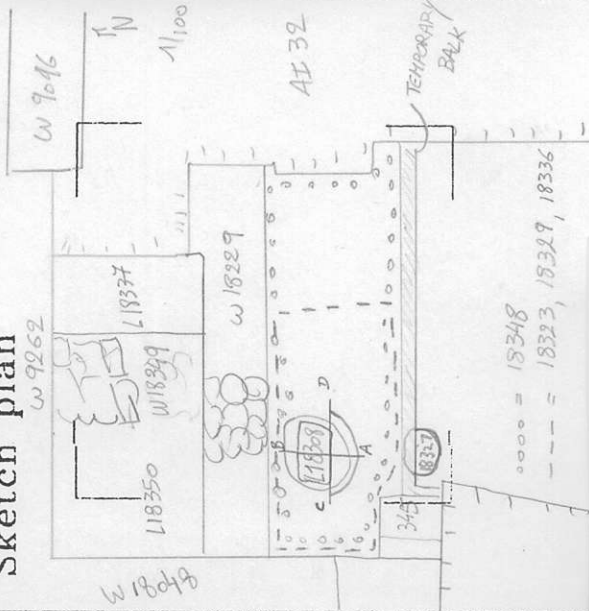
175304





Locus
L 18308

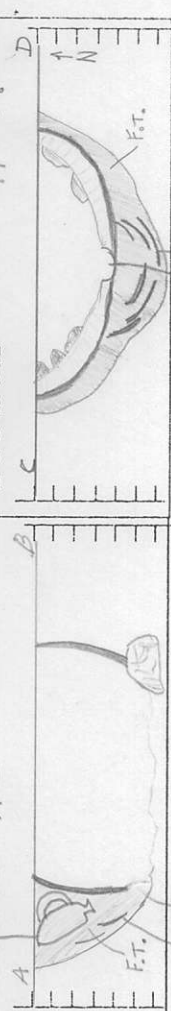
Sketch plan



Section A-B

Section C-D

Section DETAILED TOPPLAN



Sherds Hole

Facing West

A SHERDS
HOLE IN FURNACE BOTTOM



81N5E1