

| | | | | |
|---------------------------|------------------|---------|-----------------|------------------------------|
| Locus L 18305 | Dor 1917 | Fld 67 | Sq A.J.33 | Loc. type Stratified Fill |
| Open Date 06/08/97 | High at 12.40 | at C | Low at 12.37 | at E |
| Close Date 08/08/97 | High at 12.17 | at C | Low at 12.13 | at E |
| Floor: type Length 2.2 | Width 0.3 | Vol | Drawn? | Loci 18292 |
| Value 7d | Remove | | | above |
| Photo #(1) | Photo #(2) | | | Loci |
| Written by: JLM | Checked by: JRZ | | | below |

| | | | | |
|------|------------|-------|---------|-----|
| Unit | Phase < 10 | Stage | Stratum | PoM |
|------|------------|-------|---------|-----|

Summary

Opened: While excavating L18292, came down on F18292 = F18264 and a pit (L18299). The remaining area is L18305.

Limits (N) Pit 9251
 (S) Pit 18299, L18271
 (E) Bulk under W9275 west face (Phase b)
 (W) W9140.

Closed: end of season; not closed.

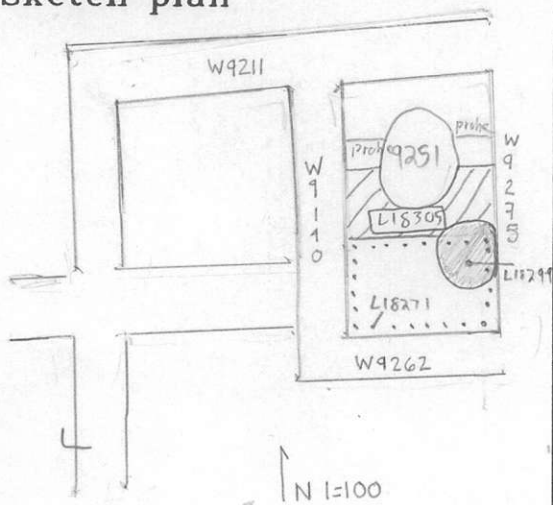
Matrix: Medium brown loess soil. F18292 is a thin yellow kukkor floor.

Relations: Above: L18292 core but does not seal L18305
 North: L18305 is cut by Pit 9251.
 South: L18305 is cut by L18299 (pit) and continues into L18271.
 East: L18305 continues into the bulk under the west face of phase d W9275
 West: L18305 reaches W9140.
 Below: none, end of season reached; L18305 continues down into unexcavated material

Additional Observations/Value: Low Value possibly disturbed. TS'ers not anymore!

Locus
L1, 8, 3, 05

Sketch plan



Photo

Photo

Section

Section

