

Locus L 18299	Dor 1997	Fld 6	Sq A233	Loc. type Pit
Open Date 04/08/97	High at 12.42	at C	Low at 12.15	at SE
Close Date 07/08/97	12.22	C	12.18	S
Floor: type Length 0.7	Width 0.7	Vol	Loci 18263 18264 18292 18271	
Value d	Remove	Drawn? Yes	above	
Photo #(1)	Photo #(2)	Loci		
Written by: JCM	Checked by: JRZ	below		

Unit	Phase 10	Stage	Stratum	PoM
------	----------	-------	---------	-----

Summary

Opened: While excavating L18292, we came down on a floor and a pit. The area under the floor is L18305, and the pit was designated L18299.

Limits (N) L18305.
 (S) L18271
 (E) Balk under west face of Phase b W9275.
 (W) 18305
 Closed: end of season. not closed.

Matrix: Reddish mudbrick debris with kurkar pebble inclusions

Relations: Above: L18264 partially covers L18299, but does not seal it.
 L18263 continues down through L18271 as the same pit as L18299*
 L18292 also covers but does not seal L18299.

North: L18299 cuts L18305
 South: L18299 continues into the unidentified eastern part of L18271.**
 East: L18299 cuts into the balk below the west face of Phase b W9275
 West: L18299 cuts L18305.
 Below: L18299 continues down into unexcavated pit material.

* L18299 actually cuts L18271, but because the downward continuation of the pit was not recognized early enough some L18299 pit material continues into L18271.

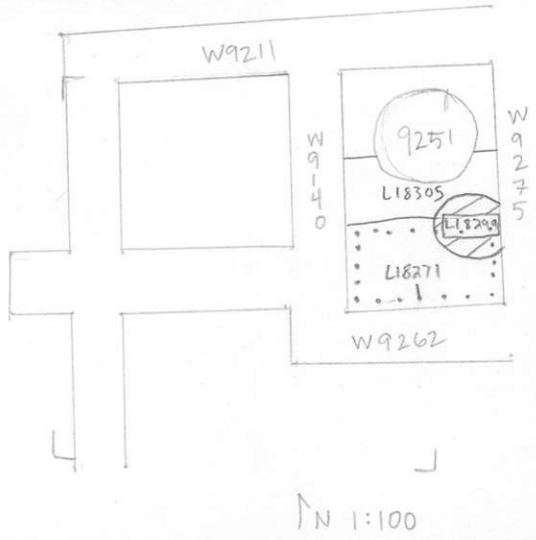
** After identifying L18263 as a pit cutting L18264, we thought we had made an error and collapsed from into L18271. only after reaching the bottom of L18271 and L18292 did we again see the clear pit line. It is likely that L18271 and L18292 are contaminated by material from pit/L18299

Additional Observations/Value: Medium Value. Early Jr. pit.

IS 602: At any rate - ph. 10 pit cutting ph. 10!

Locus
LJ 18.29.9

Sketch plan



Photo

Photo

Section

Section

