

Locus L 18292	Dor 1997	Fld G	Sq A333	Loc. type Floor Makeup + Fill to Floor
Date Open 31/07/97 Close 06/08/97	High at 17.71	at E	Low at 12.68	at W
Floor: type CP	12.40	C	12.37	E
Length 2.2	Width 0.3	Vol	Drawn? Yes	
Value 2d	Remove / /			
Photo # (1) nine	Photo # (2)			
Written by: JCM	Checked by: JRB			

Unit	Phase 10	Stage	Stratum	PoM
-------------	-----------------	--------------	----------------	------------

Summary

Opened: While excavating L18284, came down on F18284 = F18252, change to L18292 and continued excavating.

Limits (N) Pit 9251
 (S) L18264, L18263
 (E) Bulk under west Face of Phase b W9275
 (W) W9140

Closed: Came down on F18292 = F18264 and down Pit 18299 = 18264. Remaining area not in Pit 18299 below F18292 = F18264 was designated L18305.

Matrix: Looser sandy tan material with some millimetric reddish inclusions. F18284 was archy/grey with smears of charcoal.

Relations: Above: L18284 covers but does not seal [L18292]

North: [L18292] was cut by Pit 9251.

South: [L18292] continues into L18264 and was probably cut by Pit 18263. We did not see the pits relationship to L18292 until we had reached the floor.

East: [L18292] continues under the west Face of Phase b W9275.

West: [L18292] reaches W9140.

Below: [L18292] comes down on F18292 = F18264 and covers but does not seal Pit 18299 + L18305.

F18292 continues south as F18264, is cut by Pit 9251 and P18299, and is probably cut by the east Face of Phase e W9275. and also

L18292 is probably contaminated by material from pit L18264 + L18299

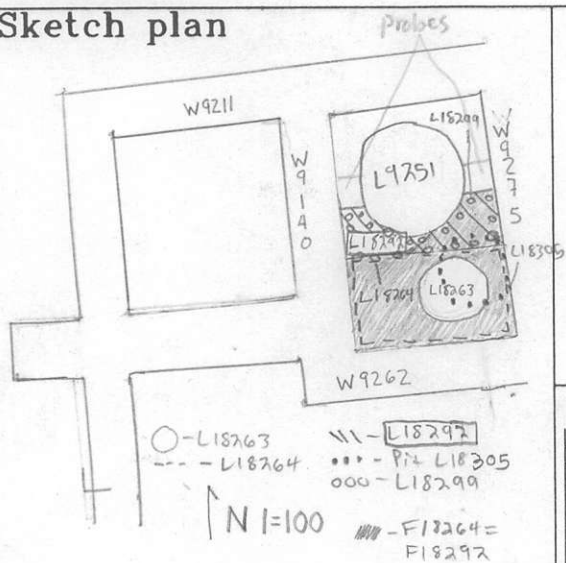
The east Face of W9275 continues down 3 courses deeper than the west face. Therefore it is unclear whether [F/L 18292] reaches W9275, or is cut by it.

Additional Observations/Value: Low Value.

Locus

L 18292

Sketch plan



Photo

Photo

Section

Section