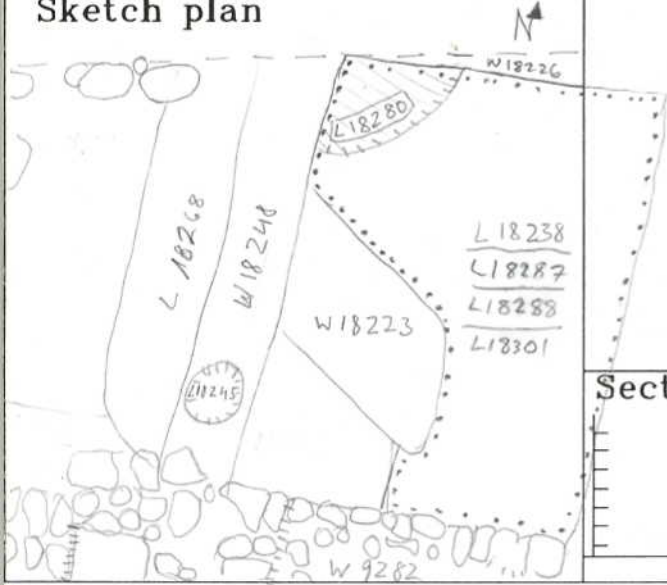


Locus L18280	Dor 19 <sub>97</sub>	Fld G <sub>1</sub>	Sq A <sub>G34</sub>	Loc. type PIT
Open 3.0/19787	Date 11/08/97	High at 14.62 M	Low at 14.62 S <sub>1</sub>	Seals: _____
Close 11/08/97		14.41 M	14.41 S <sub>1</sub>	Sealed by: _____
Floor: type _____				Loci 18222 _____
Length 0.9	Width 0.9	Vol _____		above _____
Value 4 <sub>1</sub>	Remove _____	Drawn? _____		
Photo #(1) SEE ISRA	Photo #(2) SEE ISRA			Loci UNEXCAVATED _____
Written by: M.A.S	Checked by: J.R.Z			below _____
Unit _____	Phase _____	Stage _____	Stratum _____	PoM _____
Summary				
Opened: CAME DOWN ON VERY LOOSE SOIL IN NW CORNER OF L18222.				
Limits (N) W18226				
(S) L18238, L18287, L18288, L18301				
(E) L18238, L18287, L18288, L18301				
(W) W18248				
Closed: NOT CLOSED END OF SEASON				
Matrix: SOFT ASHEY GREY SOIL WITH FIST-SIZED ROCKS				
Relations: LOCUS ABOVE: [L18280] IS COVERED BUT NOT SEALED BY L18222. N: W18226 CUTS [L18280] BECAUSE [L18280] IS AN IRON AGE PIT AND W18226 IS PROBABLY A ROMAN FOUNDATION. S+E: [L18280] CUTS L18238, L18287, L18288, L18301 W: [L18280] IS CUT BY W18248 AS W18248 APPEARS TO BE A ROMAN FOUNDATION LOCUS BELOW: UNEXCAVATED; NOT CLOSED AT END OF SEASON				
NOTE: [L18280] MAY HAVE SOME MIXED POTTERY WITH L18238. ALSO, ALTHOUGH [L18280] WAS OPENED WHEN L18222 WAS CLOSED IT IS PROBABLE THAT L18222 CONTAINS SOME MATERIAL FROM [L18280] AS THE TOP OF [L18280] WAS NOT IMMEDIATELY OBVIOUS WHEN ENCOUNTERED.				
Additional Observations/Value: LOW VALUE LATE IRON AGE PIT				

**Locus**  
L 18280



**Sketch plan**



Photo

Section

Section

□ = L18280  
••• = L18222