

Locus <u>L 18277</u>	Dor <u>1977</u>	Fld <u>6</u>	Sq <u>AJ32</u>	Loc. type <u>Pit</u>
Open <u>2.9</u> <u>07</u> <u>97</u>	High at <u>12.23</u> <u>S</u>	Low at <u>12.20</u> <u>N</u>	Seals: <u> </u> <u> </u> <u> </u> <u> </u>	
Close <u>3.0</u> <u>07</u> <u>97</u>	<u>12.04</u> <u>N</u>	<u>12.00</u> <u>S</u>	Sealed by: <u> </u> <u> </u> <u> </u> <u> </u>	
Floor: type <u> </u>	Width <u>9.3</u>	Vol <u> </u>	Loci <u>18233</u> <u> </u> <u> </u> <u> </u>	
Length <u>9.3</u>	Remove <u> </u> <u> </u> <u> </u>	Drawn? <u> </u> <u> </u>	above <u> </u> <u> </u> <u> </u> <u> </u>	
Value <u> </u>	Photo #(1) <u> </u>	Photo #(2) <u> </u>	Loci <u>18286</u> <u> </u> <u> </u> <u> </u>	
Written by: <u>JCM</u>	Checked by: <u>JR2</u>		below <u> </u> <u> </u> <u> </u> <u> </u>	
Unit <u> </u>	Phase <u> </u>	Stage <u> </u>	Stratum <u> </u>	PoM <u> </u>

Summary

Opened: While excavating L18233, came down on Installation L18275, and a Pit. The Pit was designated L18277, and the remaining area as L18267.

Limits (N) L18267, L18275
 (S) W18229
 (E) L18275
 (W) L18267

Closed: Came to the bottom of the pit. Collapsed with L18267 into L18286.

Matrix: Loose grey material with lots of clam shells.

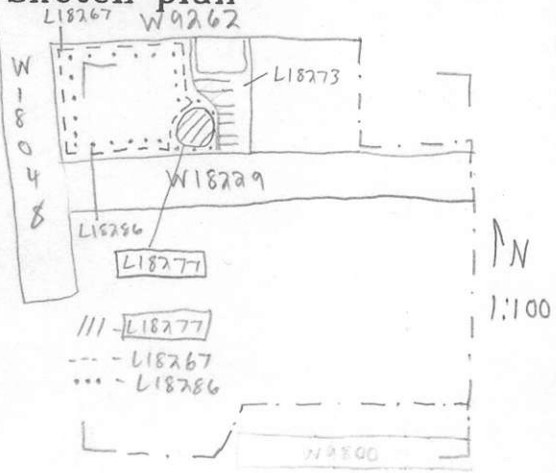
Relations: Above: L18233 covers but doesn't seal L18277
North: L18277 cuts L18275 and L18267.
South: L18277 does not cut, but is directly adjacent to W18229 and reaches it.
East: L18277 cuts Installation L18275 and ^{unexcavated} material below.
West: L18277 cuts L18267.
Below: L18277 bottoms out on L18286 and does not seal it.

Additional Observations/Value: Medium Value. Pit with lots of identifiable organic material.

Locus

LJ 18277

Sketch plan



Photo

Photo

Section

Section