

Focus 18271	Dor 1997	Fld G ₁	Sq A233	Loc. type Floor Makeup + Fill to Floor
Date 28/9/97	High at 12.40 NW	Low at 12.29 SE	Seals: _____	
Close 29/9/97	High at 12.32 NW	Low at 12.17 SE	Sealed by: _____	
Floor: type GP	High at 12.32 NW	Low at 12.25 SE	Loci 18263 18264	
Length 3.5	Width 2.5	Vol _____	above _____	
Value V	Remove _/_/_	Drawn? Yes	below _____	
Photo #(1) 166799	Photo #(2) 166800	Loci _____	_____	
Written by: JCM	Checked by: JRZ	_____	_____	

Unit _____	Phase 10	Stage _____	Stratum _____	PoM _____
------------	-------------	-------------	---------------	-----------

Summary _____

Opened: Came down on F18263 while excavating L18263 and L18264
collapsed both loci into L18271

Limits (N) T18305 bank

(S) Bank under W9262

(E) Bank under western face of W9275

(W) W9140

Closed: Came down on F18271.

Matrix: Sandy loose soil with flecks of charcoal.
F18263, F18263 is yellowish grey kukar surface.

Relations: Above: L18263 and L18264 cover but do not seal L18271

North: L18271 continues into T18305

South: L18271 continues under W9262 and into L18251.

East: L18271 continues under the west face of W9275 *belly reaching the

West: L18271 reaches W9140

F18271 continues south under W9262 and is equivalent to F18251.

* and probably reaches or was cut by the east face of W9275
which continues down 3 courses more than the west face

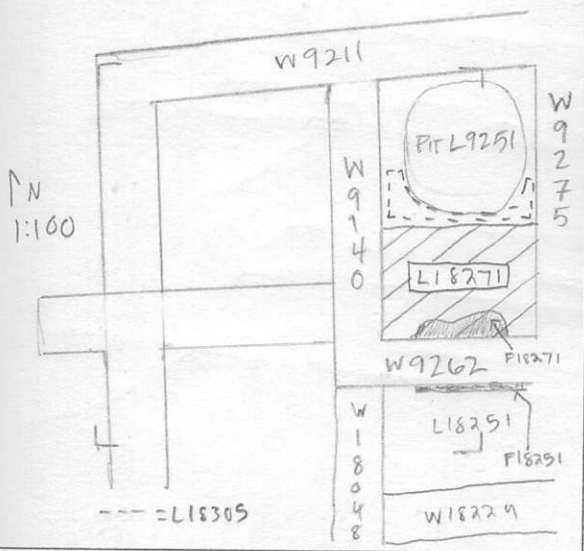
IS '02: Looks much like a Vansteenhuyse pot

Additional Photos: 166801

Additional Observations/Value: Medium Value.

Locus
4 18271

Sketch plan



Photo

Section

Section

