

|                       |                 |                    |              |  |
|-----------------------|-----------------|--------------------|--------------|--|
| Locus<br>L 18269      | Dor 1917        | Fld G <sub>1</sub> | Sq A1J3      | Loc. type<br>Floor Makeup + Fill below |
| Open 28/17/97         | Date            | High at 12.37      | Low at 12.14 | Seals: _____                           |
| Close 31/17/97        |                 | 12.22 S.E          | 12.07 N      | Sealed by: _____                       |
| Floor: type EF        |                 | 12.22 S.E          | 12.07 N      | Loci 18215                             |
| Length 3.5            | Width 4.5       | Vol                | Drawn? YCS   | above _____                            |
| Value N               | Remove 31/17/97 |                    |              | Loci 18289                             |
| Photo #(1) see L18244 | Photo #(2)      |                    |              | below _____                            |
| Written by: JCM       | Checked by: JRZ |                    |              |  |

|      |       |       |         |     |
|------|-------|-------|---------|-----|
| Unit | Phase | Stage | Stratum | PoM |
|------|-------|-------|---------|-----|

Summary

Opened: After clearing destruction material from F18215 = F18216, we continued down into pure predestruction material of L18269.

Limits (N) L18234

(S) Bulk

(E) L18244, L18070

(W) Unexcavated material below L18214

Closed: Came down on F18244 = F18234 = F18269. Collapsed entire area into L18289.

Matrix: loose tan sandy soil with flecks of ash.

Relations: Above: L18215 covers L18269. <sup>but does not seal</sup>

North: L18269 continues into L18234.

South: L18269 continues into the bulk

East: L18269 continues into L18244 and L18070

West: L18269 probably continues into unexcavated material below L18214

Below: L18269 comes down on fragmentary F18269, which covers L18289, but does not seal it

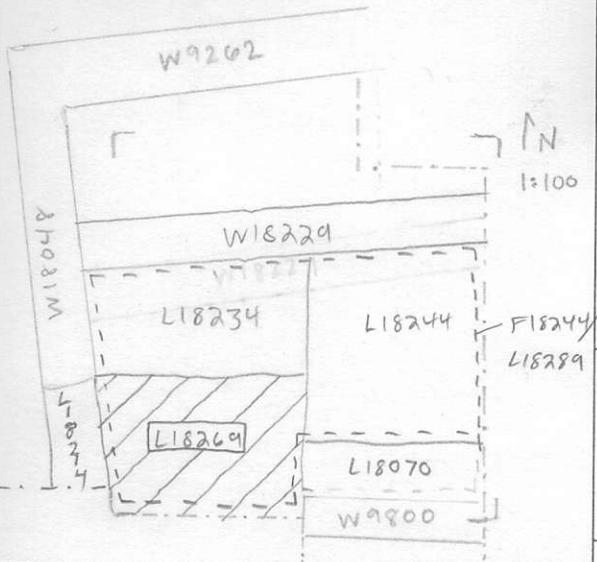
L18269 continues into F18234, F18244, and probably F18070. L18269 was very patchy and traceable only in fragments across L18269 and the adjoining loci. It is only the latest of at least five earlier surfaces which are what make up most of L18289 below.

Additional Observations/Value: High Value.

Locus

L 18269

Sketch plan



167629

Photo

Section

Section