

Focus L18256	Dor 1917	Fld G1	Sq A533	Loc. type Floor Makeup + Fill to Floor
Open Date 2/3/97/97	High at 12.72	W/C	Low at 12.67	Seals: _____
Close Date 2/4/97/97	12.63	W	12.56	Sealed by: _____
Floor: type GP	12.56	E	12.57	W
Length 3.5	Width 2.5	Vol	Loci L18252	above _____
Value U	Remove 2/4/97/17	Drawn? yes	Loci L18263	below _____
Photo #(1) 166664	Photo #(2) 166665			
Written by: JCM	Checked by: JRZ			

Unit	Phase 10	Stage	Stratum	PoM
------	----------	-------	---------	-----

Summary

Opened: Came down on a Floor while excavating L18252. Changed to L18256

Limits (N) L18292

(S) Balk under W9262

(E) Balk under W9275

(W) W9140

Closed: Came down on a possible pit. Changed to L18263 (pit) and L18264 (Floor cut by pit?)

Matrix: Floor L18252 is hard packed white ashy material. Fill below loose reddish/brown sandy soil.

Relations: Above: L18252 covers but does not seal L18256

North: L18256 probably continues through a temporary balk into L18292

South: L18256 continues under W9262

East: L18256 continues under W9275\*

West: L18256 reaches W9140

Below: L18256 covers L18263 and L18264

F18256 Reaches W9140 and continues north at F18292, and south under W9262 at F18271(?)

\* W9275 is ca 2 stones wide. The west face of W9275 floats after 2 courses. The east face of W9275 seems to continue down at least 3 more courses (as attested by a cutting made from the east side of pit 9251 up against W9275 where the west face had eroded away). It is possible that L18256 continues under the west face of W9275 and may be cut by the east face of W9275

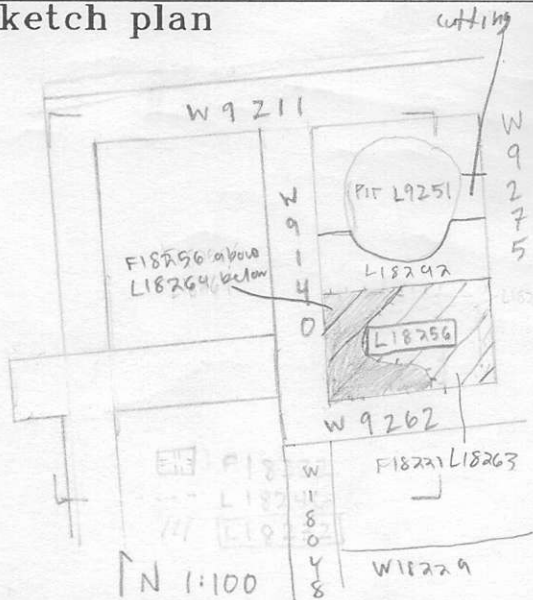
Additional Photos: 166666-667

Additional Observations/Value: Medium Value

**Locus**

U 18256

**Sketch plan**



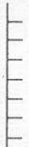
166646



166645

Photo

**Section**



**Section**

