

| | | | | |
|------------------------|--------------------|--------------------|-----------------|--------------------------------------|
| Locus L 18251 | Dor 1917 | Fld G ₁ | Sq AF32 | Loc. type Stratified accumulation |
| Open Date 22/07/17 | High at 12.36 | at C | Low at 12.33 | at N.E |
| Close Date 25/07/17 | High at 12.20 | at N.E | Low at 12.19 | at C |
| Floor: type CF | High at 12.19 | at C | Low at 12.18 | at C |
| Length 0.5 | Width 2.0 | Vol | Loci 18233 | above |
| Value V | Remove 25/07/17 | Drawn? Yes | Loci 18267 | below |
| Photo #(1) | Photo #(2) | | | |
| Written by: JCM | Checked by: JRZ | | | |

| | | | | |
|------|-------|-------|---------|-----|
| Unit | Phase | Stage | Stratum | PoM |
|------|-------|-------|---------|-----|

Summary

Opened: While excavating L18233, we came down on installation L18273 and pit L18277. The remaining area was designated L18251

Limits (N) bulk under W9262

(S) W18229

(E) L18273, L18277

(W) Bulk under W18048

Closed: came down on a patch of a floor and noticed a distinct floor in the bulk. Changed to L18267.

Matrix: Loose tan sandy soil with charcoal flecks.

Relations: Above: L18253 continues down into L18251.

North: L18251 continues into the bulk under W9262

South: L18251 reaches W18229.

East: L18251 reaches the upper course of installation L18273 and is cut by L18277

West: L18251 continues into bulk under W18048

Below: L18251 comes down on F18251 and covers ^{but does not seal} L18267.

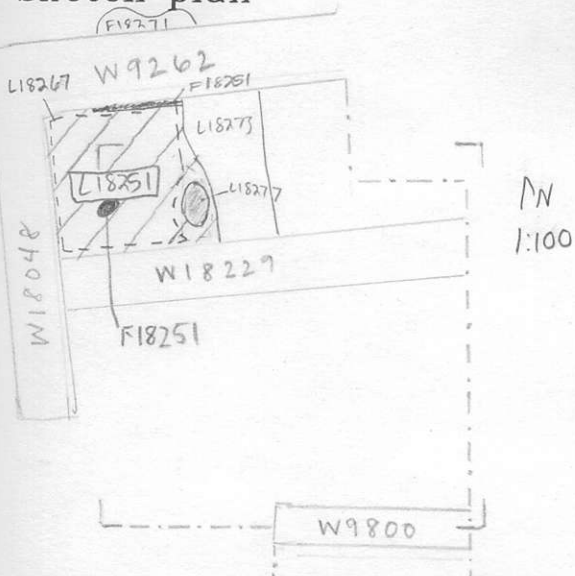
F18251 continues North under W9262 as F18271. The small patch in the center of the L18251 was not large enough to reach any surrounding walls

Additional Observations/Value: Low Value, contains mixed material from above and below F18251

LOCUS

L 18351

Sketch plan



166755

Photo



166754

Section



Section



166756