

<b>Locus</b> W 18250	Dor 1997	Fld G <sub>1</sub>	Sq A732	Loc. type Mudbrick + Stone Wall
Open	Date 22/07/97	High at 12.65	Low at 12.47	Seals: _____
Close	08/08/97	12.58	12.64	Sealed by: _____
Floor: type				Loci 18230 9967
Length 1.6	Width 0.4	Vol		above _____
Value 1	Remove	Drawn? Yes		below _____
Photo #(1) see isra	Photo #(2)			Loci _____
Written by: JCM	Checked by: JRZ			below _____

Unit	Phase 9+8	Stage	Stratum	PoM
------	-----------	-------	---------	-----

Summary

Opened: While excavating L18230, came down on wall.

Limits (N) L18293  
 (S) Bulk.  
 (E) L18242  
 (W) L18241

Closed: not closed at end of season

Matrix: 4 courses of mudbrick on the north which were too eroded to get accurate measurements (10cm thick). Southern half is 3-4 courses at 5-40 cm<sup>2</sup> fieldstones.

Relations: Above: L18230 and L9967 cover but don't seal W18250.  
 North: L18293 / F18293 reach W18250.  
 South: W18250 continues into the bulk.  
 East: L18242 / F18242 reach W18250.  
 West: L18241 / F18241 reach W18250.  
 Below: No numbered loci; unexcavated below wall this season

8/02 EB-5 the Phase 8+7 wall W9913 was built directly over this wall, which suggests that it was still standing thru Phase 9

Additional Observations/Value: High value



167642



167638



167638



166891



166899



166956



166728



166957



166890

Locus  
W 18250

Sketch plan



F18241: W18250  
F18243:  
F18242



166955

Locus W 18250	Dor 19 98	Fld G	Sq A.J.32	Loc. type stone wall
Open Date 2.3/07/98	High at 1.2.85 S	Low at 1.2.416 N	Seals: _____	
Close Date 0.7/08/98	1.1.85 S	1.1.79 N	Sealed by: _____	
Floor: type _____	Width 0.5	Vol _____	Loci 18339 See previous card	
Length 2.0	Remove 1/1/1	Drawn? YES	above _____	
Value _____			below _____	
Photo #(1) 175789	Photo #(2) 175790		Loci _____	
Written by: HAK	Checked by: J.R.Z		below _____	

Unit _____	Phase _____	Stage _____	Stratum _____	PoM _____
------------	-------------	-------------	---------------	-----------

Summary \_\_\_\_\_

Opened: See previous card

Limits (N) W9909  
 (S) balk  
 (E) L18344, L18354, L18338  
 (W) L18339  
 Closed: end of season

Matrix: Stone rubble wall, 5 course preserved in the south, one course foundation (stones extending 10cm wider than superstructure) preserved in north. The observable 1st "foundation" or 3rd course seems much better built than the upper 5 courses which were in use at the time of the destruction.

Relations: Above: L18339 covers [W18250] foundation in the north.  
 North: [W18250] abuts W9909. <sup>but does not seal</sup>  
 South: [W18250] continues into the balk.  
 East: L18338, L18344, L18354 all reach [W18250]. L18344 and L18354 both really, really reach [W18250] foundation in the north.  
 West: L18339 reaches [W18250]. Locus numbers would have been changed with further excavation.

In the Destruction Deposit there was a doorway through [W18250] from L18242 to the north. No sign of a similar doorway is yet visible in this lower phase.

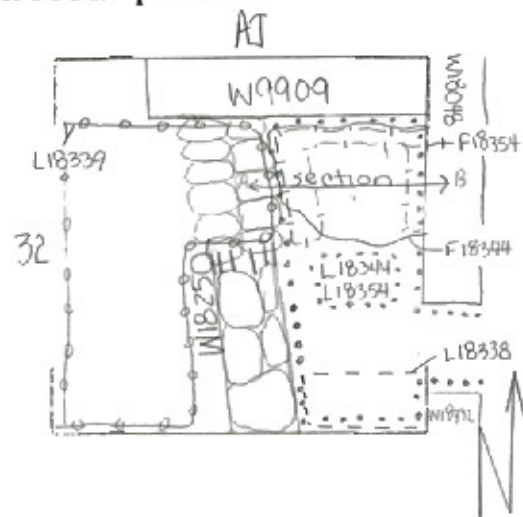
Additional photos - 175791 - 94

Additional Observations/Value: high value - one of the most beautiful reaches I've ever seen

Locus

N 18250

Sketch plan



125634

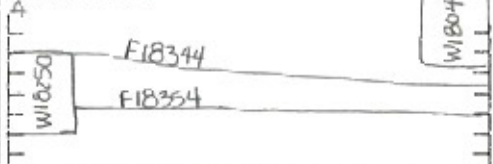


125636



Photo

Section



Section

Looking North

<b>Locus</b> W 18250	<b>Dor</b> 19 9.9	<b>Fld</b> 9.	<b>Sq</b> A7, B2, 1, 1, 1	<b>Loc. type</b> WALL (CONTINUATION CARD)
<b>Open</b> 0.2/08/99	<b>High at</b> 1.2.4.5 S	<b>Low at</b> 1.1.8.5 C	<b>Seals:</b> _____	
<b>Close</b> 0.4/08/99	1.1.7.4 C	1.1.5.5 C	<b>Sealed by:</b> _____	
<b>Floor:</b> type _____	_____	_____	<b>Loci</b> _____	
<b>Length</b> 2.3	<b>Width</b> 0.7	<b>Vol</b> _____	<b>above</b> _____	
<b>Value</b> u	<b>Remove</b> 0.2/08/99	<b>Drawn?</b> YES	_____	
<b>Photo #(1)</b> 185141	<b>Photo #(2)</b> 185142	<b>Loci</b> 18417 18422 _____		
<b>Written by:</b> K.V.	<b>Checked by:</b> J.R.Z.	<b>below</b> _____		

<b>Unit</b> _____	<b>Phase</b> _____	<b>Stage</b> _____	<b>Stratum</b> _____	<b>PoM</b> _____
-------------------	--------------------	--------------------	----------------------	------------------

**Summary** \_\_\_\_\_

**Opened:** To renew excavations to east and west of wall in 1999

**Limits (N)** W9909  
**(S)** BALK  
**(E)** L18357 / L18376 / L18377 / L18395 / L18388  
**(W)** L18372 / L18394

**Closed:** W18250 WAS REMOVED

**Matrix:** 3-4 COURSES OF DOUBLE HEAD SIZE STONES IN THE SOUTH TO ONE COURSE OF VERY BIG Boulders (2) IN THE NORTH. In the south the wall was generally 1 stone wide, while in the north, where it marked a door way adjacent to W9909, it was made of ten two smaller stones wide.

**Relations:** ABOVE: SEE PREVIOUS CARDS  
 NORTH: W18250 REACHES W9909  
 SOUTH: W18250 CONTINUES INTO BALK F18367 likely reached W18250  
 EAST: F 18357 COULD NOT BE SEEN REACHING W18250, but since it seems to be part of the same floor sequence as F18254 as probably did F18376, though this was not directly observed.  
 THE FILL OF L18376 REACHES W18250, WHICH WAS FLOATING IN L18377 AND L18395.\*  
 WEST: L/F 18372 REACHED W18250, W18250 WAS FLOATING IN L18374. EXCAVATION OF THE BALK BELOW (= 18417) YIELDED F 18417 WHICH EQUALS FLOOR LAYERS IN L18412.  
 BELOW: W18250 SEALS L18417 AND L18422

W18250 WAS VERY CLEARLY A PARTITION WALL TO DIVIDE THE AREA SOUTH OF W9909. IT WAS BUILT

Written by: K.V. Checked by: J.R.Z. below

Unit \_\_\_\_\_ Phase \_\_\_\_\_ Stage \_\_\_\_\_ Stratum \_\_\_\_\_ PoM \_\_\_\_\_

Summary \_\_\_\_\_

Opened: To renew excavations to east and west of wall in 1999

Limits (N) W9909

(S) BALK

(E) L18387 / L18376 / L18377 / L18395 / L18388

(W) L18372 / L18394

Closed: W18250 WAS REMOVED

Matrix: 3-4 COURSES OF DOVILE HEAD SIZE STONES IN THE SOUTH TO ONE COURSE OF VERY BIG Boulders (2) IN THE NORTH. In the south the wall was generally 1 stone wide, while in the North, where it marked a doorway adjacent to W9909, it was more often two smaller stones wide.

Relations: ABOVE: SEE PREVIOUS CARDS

NORTH: W18250 REACHES W9909

SOUTH: W18250 CONTINUES INTO BALK F18367 likely reached W18250

EAST: F18367 COULD NOT BE SEEN REACHING W18250 but since it seems to be part of the same floor sequence as F18254 <sup>as probably did F18376, though this was not directly observed.</sup> THE FILL OF L18376 REACHES W18250, WHICH WAS FLOATING IN L18377 AND L18395 \*

WEST: L/F18372 <sup>reached</sup> W18250, W18250 WAS FLOATING IN L18394. EXCAVATION OF THE BALK BELOW (=L18417) YIELDED F18417 WHICH EQUALS FLOOR LAYERS IN L18412.

BELOW: W18250 SEALS L18417 AND L18422

W18250 WAS VERY CLEARLY A PARTITION/WALL TO DIVIDE THE AREA SOUTH OF W9909. IT WAS built on top of a series of local phase W floors. The weight of the wall gradually caused the floors and material below it to sink and compress. This was clear from the south halves E. and W. of the W18250 which showed 5-7 floor lines diving below W18250. These floors are represented by L18395 (E of W18250) and L18412 (W of W18250). W18250 WAS completely floating once the floor layers had been penetrated to either side of W18250

\* L18388 REACHES W18250 BUT NOT ITS FLOOR. L18388 IS THE LAST LENS IN WHICH W18250 IS NOT COMPLETELY FLOATING. <sup>so perhaps its floor could have reached the wall.</sup> Summary: on W F18394 and above probably or certainly reach W18250, while the floors in L18412 dive below the wall

PHOTO'S: 185143 - 185144 on E F18376 and above probably or certainly reach W18250, while the floors in L18395 dive below the wall

Additional Observations/Value: MEDIUM VALUE

