

Focus 18,2,3,3	Dor 19,7	Fld 6,1	Sq 1,1,3,2,1,1,1,1	Loc. type Floor makeup + Fill below
pen	Date 1/6/97	High at 1,2.7,2	Low at 1,2.5,6	Seals: _____
lose	2/2/97	1,2.3,6	1,2.3,3	Sealed by: 1,8,2,2,1
floor: type	_____	_____	_____	Loci 1,8,2,2,1
length 3,5	Width 2,9	Vol _____	Drawn? _____	above _____
value 5,1	Remove _____	_____	_____	below _____
Photo #(1) _____	Photo #(2) _____	_____	_____	Loci 1,8,2,5,1 1,8,2,7,3 1,8,2,7,7
Written by: JCM	Checked by: JRZ	_____	_____	_____

Unit _____	Phase _____	Stage _____	Stratum _____	PoM _____
------------	-------------	-------------	---------------	-----------

Summary _____

Opened: Came down on a floor while excavating L18221. Excavated below as

Limits (N) Bulk under W9262

(S) W18229

(E) L18243

(W) Bulk under W18048

Closed: Came down on installation L18273 and L18277 (pit). Remaining area

changed to L18251

Matrix: White ashy floor material with multiple resurfacings. Matrix

below is loose sandy and ashy material.

Relations: Above: L18221 seals L18233

North: L18233 continues under W9262

South: L18233 reaches W18229

East: L18233 continues into L18243

West: L18233 continues under W18048

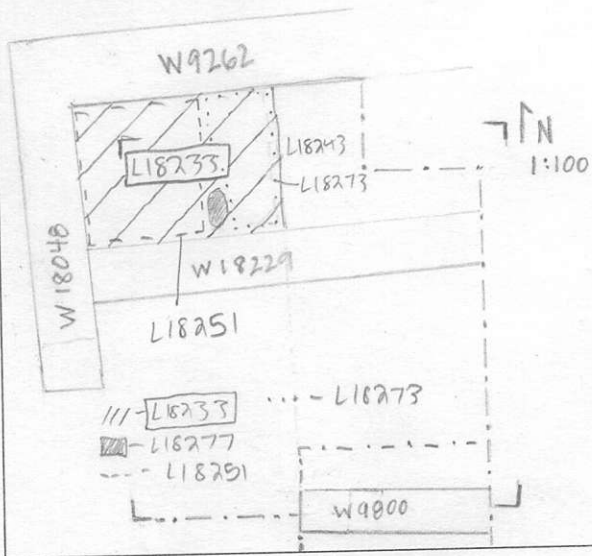
Below: L18233 covers L18273 and pit L18277, and continues down as

L18251. but does not seal

Additional Observations/Value: High Value Predestruction Material

LOCUS
L 18233

Sketch plan



Photo

Photo

Section

Section