

Locus L 18230	Dor 1917	Fld G	Sq A533	Loc. type Stratified Accumulation
Open 16/07/97	High at 12.86 SW	Low at 12.74 S	Seals: _____	
Close 18/07/97	12.66 W	12.54 SE	Sealed by: _____	
Floor: type _____	Length 3.5	Width 1.9	Vol _____	Loci 9996 9908 9947 9900
Value Pit	Remove _____	Drawn? Me		above _____
Photo #(1) _____	Photo #(2) _____			Loci 18241 18249 18250
Written by: JCM	Checked by: JRZ			below _____

Unit _____	Phase 9(cleaning)	Stage _____	Stratum _____	PoM _____
------------	-------------------	-------------	---------------	-----------

Summary _____

Opened: Beginning of season. Opened to clean the western part of A533 and redefine material from last season ('93).

Limits (N) Bulk under W9065, L18230
 (S) Bulk
 (E) L9967
 (W) Bulk

Closed: Came down on rubble in northern half of square. Changed to L18249 (rubble) and L18241 (sum of rubble)

Matrix: Sandy loose soil with multiple layers of sand/hard packed mud. It looks much like ancient erosion. Contains a good amount of midbrick debris on the eastern side, and lots of first world sized rubble on the north.

Relations: Above: L9996, L9908, L9947, L9900, & L9997 cover but do not seal L18230

North: L18230 continues into the bulk under W9065, and into L18231
 South: L18230 continues into the bulk.
 East: L18230 continues East into L9967.
 West: L18230 continues into the bulk.
 Below: L18230 covers but does not seal L18241, L18249, and the western half of W18250

The bulk material in the northern part of the square is a mix of erosion from W9065's westward extension and F9947. This floor covers a matrix identical to that in L18241 & L18234.

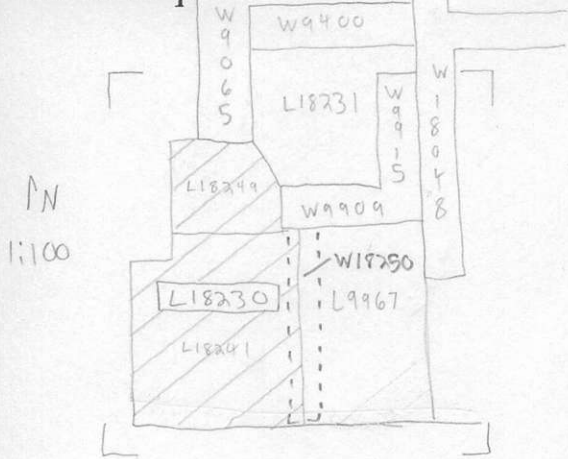
L18230 contains mixed material from Pit 9997 & 9998 in the north western part of the locus.

Additional Observations/Value: Medium Value.

Locus

4 18230

Sketch plan



Photo

Photo

Section

Section