

Locus W18229	Dor 1977	Fld G	Sq AJ32	Loc. type Mudbrick wall with Stone Piers
Open	Date 15/07/97	High at 12.82	Low at 12.56	Seals: _____
Close	08/08/97	12.21	11.92	Sealed by: 18224 182117
Floor: type				Loci 18221 18217
Length 5.0	Width 0.8	Vol		above _____
Value 15	Remove	Drawn? Yes		below _____
Photo #(1) 166755	Photo #(2) 166756			
Written by: JCM	Checked by: JRZ			

Unit	Phase	Stage	Stratum	PoM
------	-------	-------	---------	-----

Summary

Opened: while excavating L18217 and L18221, came down on stone piers and mudbrick wall of W18229.

Limits (N) L18233, L18243, L18251, L18267, L18273, L18277

(S) L18235, L18234, L18244, L18289

(E) Baulk

(W) W18048

Closed: end of season. Not closed.

Matrix: Mudbrick wall with fieldstone piers and socle. The stones of the western face are roughly 10-35 cm in diameter and we have reached 4-7 courses. The socle is of the same kind of stones and 2-3 courses deep. The mudbrick construction is orange/red with circular inclusions. No Fuga lines were identifiable. Possibly a pisé wall.

Relations: Above: L18221 and L18217 seal W18229 via the destruction floors 18058 and 18216.

North: F18221 reaches W18229. L18233, L18243, L18251, L18267, L18286, and F18286 also reach W18229. L18277 is directly adjacent to W18229, but does not Installation L18273 abuts the middle stone pier of W18229 as far as we can tell this season.

South: L18235, L18234, L18244 all reach W18229. F18234 = F18244 also reach W18229. L18289 and F18289 also reach W18229. Though note these relations will be more certain once the south socle of W18229 is visible as the above floors stop short of W18229, though this may be an accident of trimming away from the mudbrick face.

East: W18229 may continue into the baulk but the relation is unclear this season. JRZ 02 It stops at east limit of W18349

West: The west pier of W18229 may dovetail with both stone pier and southern half of W18048, and the higher northern half. (see section)

* We have only identified the stone socle in the southern edge of L18286 at 12.27m on the west, and 12.13m on the east.

Additional Observations/Value: High Value. Possible pisé construction wall.



143677



143672



143678



143674



166952



166999



167631



166950



166953



166948



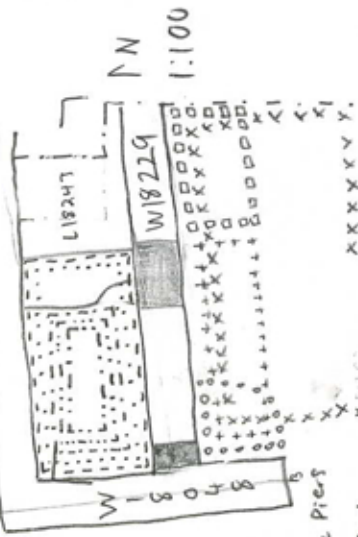
166949



166951

LOCUS
W 1821219

Sketch plan



- Stone Piers
- L18221
- L18233
- L18251
- L18266
- L18267
- o o o L18235
- + + + L18234
- □ L18244
- x x L18284



167628



166756



166755

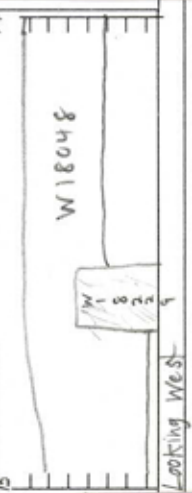


166436



166435

Section



Looking West

oto



167632



167630

Locus Wj 18229	Dor 1917	Fld G	Sq A132	Loc. type Mudbrick wall (Card 2)
Open	Date	High at	Low at	Seals: _____
Close				Sealed by: _____
Floor: type				Loci
Length	Width		Vol	above
Value	Remove		Drawn?	_____
Photo #(1)	Photo #(2)			Loci
Written by: _____	Checked by: _____			below

Unit _____	Phase _____	Stage _____	Stratum _____	PoM _____
------------	-------------	-------------	---------------	-----------

Summary _____

Opened: _____

Limits (N) _____
 (S) _____
 (E) _____
 (W) _____

Closed: _____

Matrix: The Western pier is 4-7 courses high and we have exposed 2-3 courses of the central pier. These piers are made of unworked and roughly worked fieldstones ranging from 10-35 cm. We have exposed 2-3 courses of the socle made from the same sized stones.

Relations: It is also possible, yet unclear, that W18048 leap frogs over the Western pier of W18229. In this case W18048 might be continuous with W9909.

Additional Observations/Value: _____

Locus W 18229	Dor 1998	Fld G	Sq A.I. 32	Loc. type CARD I WALL (EAST / CONTINUATION ON CARD)
Open	Date 0.5/0.8/9.8	High at 12.4.6 E1	Low at 12.4.6 W1	Seals: _____
Close	0.7/0.8/9.8	1.1.8.9 W1	1.1.8.3 E1	Sealed by: 18221 18217
Floor: type	_____	_____	_____	Loci 18221 18217
Length 2.8	Width 0.7	Vol _____	above _____	below _____
Value i	Remove 0.7/0.8/9.8	Drawn? Y E S		
Photo #(1)	_____	Photo #(2)	_____	
Written by: K.V.	Checked by: J.R.Z.			
Unit _____	Phase _____	Stage _____	Stratum _____	PoM _____

Summary

Opened: W18229 (EAST OF MIDDLE STONE PIER) WAS REOPENED TO REMOVE PART OF THE RED MUDBRICK PHASE (FOR WEST PART; SEE CARD II)

Limits (N) L18243, L18313, L18337

(S) L18289, L18323, L18312, L18325, L18328, L18329, L18333, L18336, L18348, L18359

(E) BALK

(W) MIDDLE STONE PIER AND SOCLE OF W18229 (SEE CARD II)

Closed: WE REMOVED THE RED MUDBRICK, BUT SOME IS STILL VISIBLE IN (TEMPORARY) EAST BALK

Matrix: SEE MATRIX CARD

Relations: ABOVE: W18229 IS SEALED BY L18221 AND L18217

BELOW: NO RELATIONS.

TO THE NORTH: L18243 AND F18313 ARE REACHING THE MUDBRICK OF W18229. L18337 REACHES THE MUDBRICK AND THE GREY FILL BELOW (E.T. OF W18229 CUTS L18337?). NO STONE SOCLE WAS FOUND UNDERGATH THE MUDBRICK HERE, BUT A ROW OF DOUBLE FIST SIZE SEARS RUNS NORTH OF W18229 IN L18337, PROJECTING THE OUTSIDE LINE (N) OF THE W-SOCLE INTO THE EAST PART (WAS THE STONE SOCLE ROBBED HERE?) @ This may indicate that W18229(e) is foundation at level of 18337 and may cut 18337.

TO THE SOUTH: ONLY AFTER REMOVING THE MUDBRICK, IT BECAME CLEAR THAT ONLY L18348 AND L18359 REACH ONLY THE GREY FILL UNDER W18229. L18333^{AND 336 AND 312} SEEMS (ACCORDING TO LEVELS) TO REACH GREY FILL AND THE MUDBRICK. L18328, L18323, L18329 REACH ONLY THE MUDBRICK. ONLY IN L18325 (V) THERE WAS SOME FLOOR MATERIAL REACHING THE MUDBRICK OF W18229 (12.20 - 12.12), BUT THESE ARE MORE LIKELY TO BE EARLIER RESURFACINGS OF F18289, WHICH IS REACHING THE MUDBRICK OF W18229. * Again possibly indicating 18229 as foundation at this level and so cutting 18348 + 18359.

* F18323 IS THE BEST POSSIBLE PARTNER TO MATCH F18313 (ACCORDING TO LEVELS) MAKING A LINK BETWEEN N AND S OF W18229

TO THE WEST: THE MUDBRICK (DOVETAHS) GOES INTO) REACHES THE MIDDLE PIER OF W18229 (CARD II)

TO THE EAST: W18229 CONTINUES INTO THE BALK

NOTE: THAT ONLY F18313 EXISTS N OF W18229 (E), WHILE A 20-30CM DEPOSIT OF ASH LAYERS (AND THEIR FILL) REACH W18229 FROM THE S, MIGHT SUGGEST THAT W18229 (E), IF NOT ORIGINAL TO THE SMITHY AREA, HAD TO HAVE BEEN ADDED EARLY ON.

Additional Observations/Value: HIGH VALUE



175603



175601

Locus W 1,8,229	Dor 19 9,8	Fld G ₁	Sq A.I, 3,2	Loc. type CARD II WALL (WEST) CONTINUATION GARD
Open Date 22/07/98	High at 12.41 E ₁	Low at 12.317 C ₁	Seals: _____	
Close 30/07/98	12.09 N ₁	11.97	Sealed by: 18221 18217	
Floor: type _____	Length 2.1	Width 0.6	Vol _____	Loci 18221 18217
Value _____	Remove _____	Drawn? YES	above _____	
Photo #(1) 175519	Photo #(2) 175520	Loci _____	below _____	
Written by: K.V.	Checked by: J.R.Z.			

Unit _____ Phase _____ Stage _____ Stratum _____ PoM _____

Summary

Opened: W18229 (W) WAS REOPENED TO REMOVE THE RED MUDBRICK PHASE FROM THE STONE SOCLE

Limits (N) L18286, L18320, L18314, L18350, W18349
 (S) L18289, L18323, L18329, L18336, L18348, L18358
 (E) EASTERN HALF OF W18229 (SEE CARD I)
 (W) W18048

Closed: NOT CLOSED, WE'VE REACHED THE STONE SOCLE WHICH IS FLOATING ON NORTHSIDE

Matrix: SEE MATRIX CARD

Relations: ABOVE: W18229 IS SEALED BY L18221 AND L18217

BELOW: NO RELATIONS

TO THE NORTH: F18286 REACHES THE STONE SOCLE OF W18229, F18320 (IN L18320 AND L18314) WANTS TO REACH (DIVES UNDER) BOTTOM OF THE LOWEST VISIBLE COURSE OF W18229. L18350 IS POSSIBLY CUT BY, AND CONTINUES IN BALK UNDER W18229. It seems that W18349 abuts, at least partially, THE STONE SOCLE OF W18229. (THERE'S DEFINITELY NO RELATION BETWEEN W18349 AND THE PIER AND/OR MUDBRICK PHASE OF W18229) THERE IS A 70CM GAP IN THE TOP COURSE OF W18349, SUGGESTING A DOORWAY* ONLY THE LOWEST 2 COURSES MAY ABUT THE STONE SOCLE.

TO THE SOUTH: THE RED MUDBRICK WAS COVERING THE STONE SOCLE AND ALSO WENT DOWN (10CM WIDE) BESIDE THE SOCLE ON THE SOUTHFACE. L18289 AND L18323 ARE REACHING THE RED MUDBRICK, L18229 REACHES THE MUDBRICK AND THE GREY FILL. L18336 AND L18348 REACH THE STONE SOCLE, L18358 MAY DIVE UNDER THE SOCLE (UNCLEAR YET). Note that if socle is a foundation at level of 18348 it must cut 18348. Further excavation required.

TO THE WEST: IN W18048, THERE MIGHT BE A SECOND STONE PIER OF W18229, NOW SLIGHTLY PROJECTING EASTWARDS. THE MUDBRICK REACHES THAT 'PIER', THE SOCLE CONTINUES UNDERNEATH, AS THE PIER IS BUILT ON TOP OF SOCLE, BUT FURTHER RESEARCH IN W18048 IS NECESSARY.

TO THE EAST: (CARD I) THE MUDBRICK REACHES THE PIER, WHICH IS BUILT ON TOP OF THE SOCLE AT A DIFFERENT ANGLE (2nd STAGE??)

* THIS GAP APPEARED TO BE A DOORWAY WHICH DOES HAVE A CONNECTION (YET DEBATED) TO W18220 (see 1998 card for W18249)

PHOTO'S: 175221 - 175222

Additional Observations/Value:

HIGH VALUE

184725



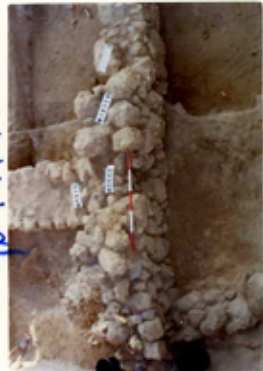
184725



194723



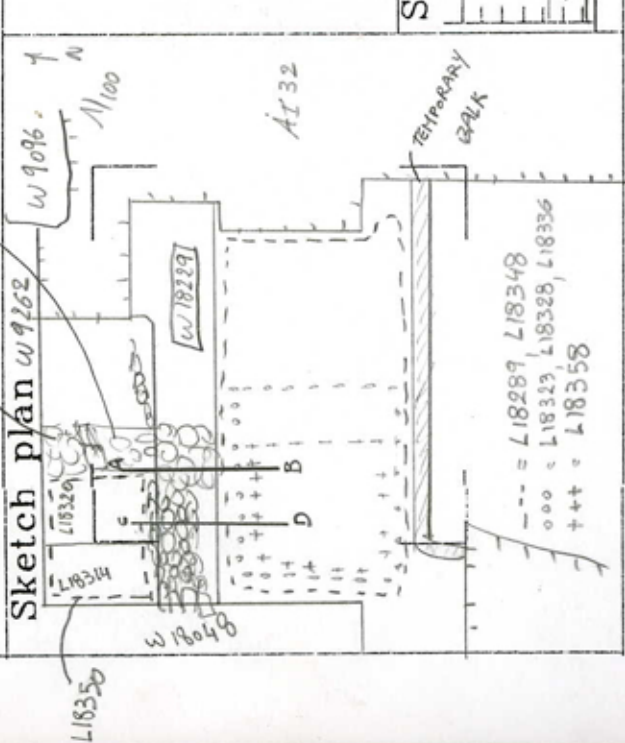
18471A



184721

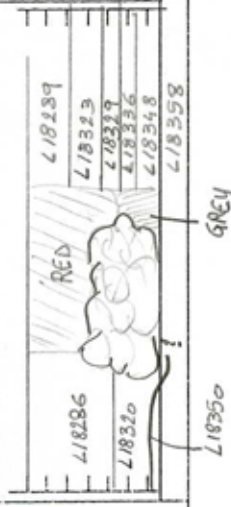


Locus
W 182229



Photo

Section e-d (LOOKING EAST)



Photo

Section A-B (LOOKING EAST)



cleared on last day and some parts of lower courses of 18349 about 18229 socle

LOCUS 181229	Dor 19 9.8	Fld G ₁	Sq A.I 3.2	Loc. type WALL (CONTINUATION CARD)
Open	Date	High at	Low at	Seals: _____
Close	_____	_____	_____	Sealed by: _____
Floor: type	_____	_____	_____	Loci
Length	Width	Vol	_____	above
Value	Remove	Drawn?	_____	below
Photo #(1)	_____	Photo #(2)	_____	Loci
Written by: KV	_____	Checked by: JAZ	_____	below

Unit	Phase	Stage	Stratum	PoM
Summary				

Opened: _____

Limits (N) _____

(S) _____

(E) _____

(W) _____

Closed: _____

Matrix: RED MUDBRICK WEST AND EAST OF THE MIDDLE pier OF W18229 WAS A MUDBRICK PHASE ATTESTED. ON BOTH SIDES IT WAS IMPOSSIBLE TO FIND MORE THAN A LINGO MUDBRICK, THE WALL CONSISTS OUT OF RED MUDBRICK WITH SMALL EGGSIZE ROCKS IN IT. ONLY THE WESTERN PART OF W18229 ^{non red mudbrick} CAME DOWN ON A STONE SOCLE. (SEE CARD I) ALSO IN THE WEST, THE MUDBRICK HANGS PARTIALLY OVER THE STONE SOCLE (± 10cm wide)

Relations: down along its south face. THIS EASTERN PART CURVES VERY CLEAR INWARDS (N) AT ITS BASE BUT HAS NO SOCLE. BOTH ^{faces of the wall} REACH THE MIDDLE pier.

E MUDBRICK? Top: 12.46 (E) / 12.46 (W) Bottom: 11.89 (W) / 11.83 (E) (2.9 by 0.7 m)

W MUDBRICK: Top: 12.41 (E) / 12.37 (C) Bottom: 12.09 (W) / 11.97 (S) (1.4 by 0.6 m)

PIERS W18229 HAS A MIDDLE pier AND A POSSIBLE W-PIER PARTIALLY COVERED BY W18048. THE MIDDLE pier CONSISTS OUT OF 3 COURSES OF HEADSIZE STONES AND IS BUILT ON TOP OF THE STONE SOCLE AT A SLIGHTLY DIFFERENT ANGLE. E AND W MUDBRICK PHASE REACH THIS pier*. THE WESTERN pier CONSISTS OF SINGLE STONES (AT LEAST 3 COURSES HIGH OF HEADSIZE STONES) PROJECTING EASTWARDS OUT OF W18048. ONLY THE W-MUDBRICK PHASE REACHES THIS pier. Removal of W18048 is necessary to confirm the existence of this 2nd pier.

MIDDLE pier: Top: 12.64 (E) / 12.53 (S) Bottom: 12.03 (W) / 12.01 (E) (7.0 by 7.0 cms)

WEST pier: Top: 13.05 (N) / 12.88 (S) Bottom: 12.17 (N) / 12.07 (S) (7.0 by ? cms)

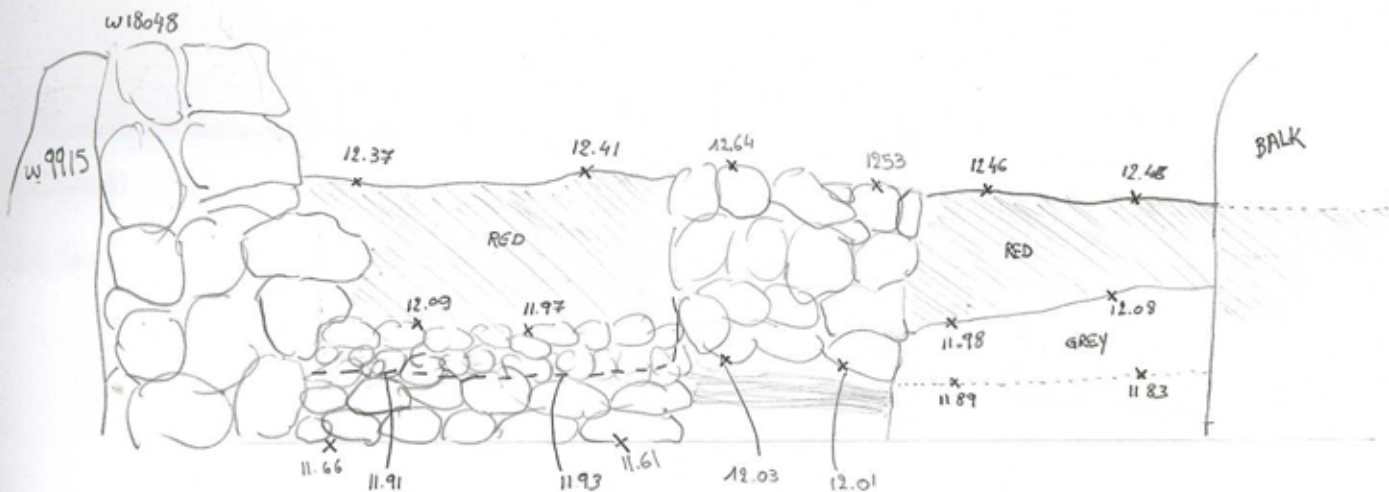
* EVIDENCE FOR A SECOND BUILDING STAGE?

SOCLE THE SOCLE OF W18229 IS VERY WELL PRESERVED IN ITS WESTERN PART. THERE'S A POSSIBLE EXTENSION OF IT EAST OF THE MIDDLE pier, CONSISTING OUT OF A 2 COURSE HIGH LINE OF DOUBLE FIRST SIZE STONES IN L18337. THE W-PART CONSISTS OF 2-3 COURSES OF FIRST SIZE STONES ON TOP OF 2 COURSES OF HEADSIZE STONES, WITH FIRST SIZE STONES IN BETWEEN. THE 2 PIERS WERE BUILT ON TOP OF THIS SOCLE, CONNECTED BY THE MUDBRICK, SLIGHTLY LIKE TO THE SOUTH (2nd STAGE ??). THE SOCLE ABUTS W18349 VIA ITS POSSIBLE DOORWAY

W SOCLE: Top: 12.41 (E) / 12.37 (C) Bottom (W): 11.60 / 11.50 (S): 11.66 / 11.61

Additional Observations/Value E SOCLE (??) Top: 11.98 (W) / 11.77 (S) Bottom: 11.70 (E) / 11.65 (W)

UNSCALED SKETCH W18229 (LOOKING NORTH)



LOCUS
W 18229

Sketch plan



184720



184722



184723



184724



Locus W 18229	Dor 1999	Fld G ₁	Sq AI-AJ 32	Loc. type WALL (CONTINUATION CARD)
Open Date	High at	Low at	Seals: 18421	_____
04/28/99	12.79 W	12.17 S	Sealed by:	_____
Close 04/28/99	11.79 W	11.68 E	Loci	_____
Floor: type	Width	Vol	above	_____
Length 2.9	9.8	_____	below	_____
Value 4	Remove 04/28/99	Drawn? YES	Photo # (1)	Photo # (2)
Written by: KYL	Checked by: JRZ	Loci 18421	_____	_____
_____	_____	below	_____	_____

Unit	Phase	Stage	Stratum	PoM
------	-------	-------	---------	-----

Summary _____

Opened: W18229 WAS FLOATING

Limits (N) L18366 / W18349 / L18365 / L18384

(S) L18368 / L18374

(E) BALK

(W) W9909 / W9915

Closed: W18229 WAS REMOVED

Matrix: PIER IN WEST: 4 COURSES OF HEADSIZE STONES (3-4 STONES WIDE) AND UPPER COURSE OF SIMILAR STONES SUPPORTED BY FIST SIZE STONES = STAGE A (High: 1279-1259 Low: 1198-1189) (SEE CARD 2)

WALL: A LOWER COURSE OF DOUBLE HEAD SIZED STONES BELOW 2 COURSES OF FIST TO HEADSIZE STONES; A NICE CUT (PAVING) WHITE SMOOTH STONE IN THE EAST SEEMS TO LINE A DOORWAY. See also previous card

Relations: ABOVE: STAGE A (= MUDBRICK AND PIER STAGE) COVERS STAGE B (= STONE SACKLE)

NORTH: W18229 WAS FLOATING IN THE 1999 SEASON AT SOME PLACES. L18365 AND L18366 CONTINUE INTO

L18421 BELOW W18229. WHEN REMOVING W18349 IT WAS CLEAR THAT THIS WALL WAS BUILT AGAINST W18229

L18384 REACHES W18229 AS DID W18048 ABOVE. FLOOR 1 IN L18384 RUNS UNDER THE PIER OF W18229 AND IS

EARLIER THAN STAGE A (1266). F18384 (1171-63) GOES WITH W18229 AND PROBABLY EQUALS F18320. ALL OTHER

FLOORS IN L18384 DO NOT REACH W18229 NOR DOES F18403 WHICH IS BELOW ITS LOWEST COURSE. *

SOUTH: W18229 WAS COMPLETELY FLOATING IN L18368 AND L18374

EAST: W18229 CONTINUES INTO THE BALK. HOWEVER EAST OF THE POSSIBLE DOORWAY NO MORE STONES WERE

VISIBLE IN THE BALK. THIS EAST SECTION IS THE REDDISH PARTED MUDBRICK DEBRIS DESCRIBED IN 198 CARDS

WEST: W18229 STAGE A GOES WITH STAGE B OF W9915. STAGE B OF W18229 (= STONE COURSES) GOES WITH

STAGE C OF W9915 AND THESE STAGES CLEARLY DOVE-TAIL AT THE JUNCTION OF W9915 AND W18229

WHERE THEY BOTH DOVE-TAIL W9909. DESPITE THESE SEVERAL PHASES IT CAN BE SAID THAT ALL THREE

WALLS ARE CONTEMPORARY AND EARLIER THAN W18048

* ALL FLOORS IN L18384 GO WITH STAGE B OF W18229 EXCEPT FOR F18403 WHICH DIPS BELOW

[FLOOR 4 (1267-60), FLOOR 2 (1186-84), FLOOR 3 (1179-77), FLOOR 4 (1171-63)], FLOOR 5 (1157-53)

IS THE EARLIEST ONE TO GO WITH STAGE B OF W18229

BELOW: W18229 SEALS L18421

Additional Observations/Value: HIGH VALUE

186502 185148 186108



185150 186804



185104

189568



186803



185149

184820



184724



184722



Locus

W18229

Sketch plan



184488



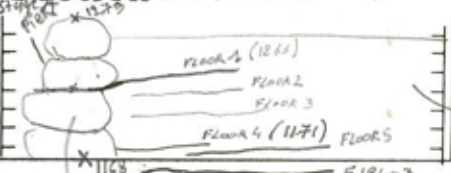
184720



Section A-B



Section C-D (LOOKING EAST)



W 9915 AND W 9909

REMOVED MUDBRICK IN 1998

W18229 stage B

W18229 Stage B

185104

Locus WJ 18229	Dor 19 ₉₉	Fld G ₁	Sq _____	Loc. type CONTINUATION CARD
Open _____	Date _____	High at _____	Low at _____	Seals: _____
Close _____	_____	_____	_____	Sealed by: _____
Floor: type _____	_____	_____	_____	Loci _____
Length _____	Width _____	Vol _____	_____	above _____
Value _____	Remove _____	Drawn? _____	_____	Loci _____
Photo #(1) _____	Photo #(2) _____	_____	_____	below _____
Written by: _____	Checked by: JRZ	_____	_____	_____
Unit _____	Phase _____	Stage _____	Stratum _____	PoM _____

Summary _____

Opened: _____

Limits (N) _____

(S) _____

(E) _____

(W) _____

Closed: _____

Matrix: _____

Relations: _____

THE SUGGESTION HAS BEEN MADE THAT THE ^{West} pier of [W18229] GOES WITH W18048 AND BEING PART OF THAT WALL, THEREFORE CONNECTS THE NORTHERN AND SOUTHERN PARTS OF THIS WALL. THE PIER WOULD HAVE BEEN IN USE IN PHASE 10 (AS PART OF [W18229]) BUT IT WOULD THEN BE INCORPORATED IN THE PHASE 9 WALLS AS WELL, AS IS W18048 PART OF THAT SEQUENCE.

Additional Observations/Value: _____

185264



185263



184987



185269



184986



185271



Locus

W 18229

Sketch plan

184701



184816



184818



18485



184817



185265



184965

