

Locus L 18219	Dor 1917	Fld G	Sq AJ32	Loc. type Fill below wall
Date Open 07/11/97 Close 07/14/97	High at 13.49 S 13.13 N	Low at 13.42 N 13.08 S	Seals: _____ Sealed by: _____	
Floor: type _____ Length 9.8 Value U	Width 9.5 Remove / / /	Vol _____ Drawn? NO	Loci W9140 above _____	
Photo #(1) _____	Photo #(2) _____	Loci L18214 below _____		
Written by: JGM	Checked by: JRZ			

Unit _____	Phase 9	Stage _____	Stratum _____	PoM _____
-------------------	----------------	--------------------	----------------------	------------------

Summary

Opened: W9140 was eroding. For safety reasons we removed the wall exposing W9148 + W915 and soil from the southern end of these walls to the balk

Limits (N) eroded W9140
 (S) Balk
 (E) _____
 (W) _____

Closed: Came down on soil change indicating destruction material.
 Changed to L18214

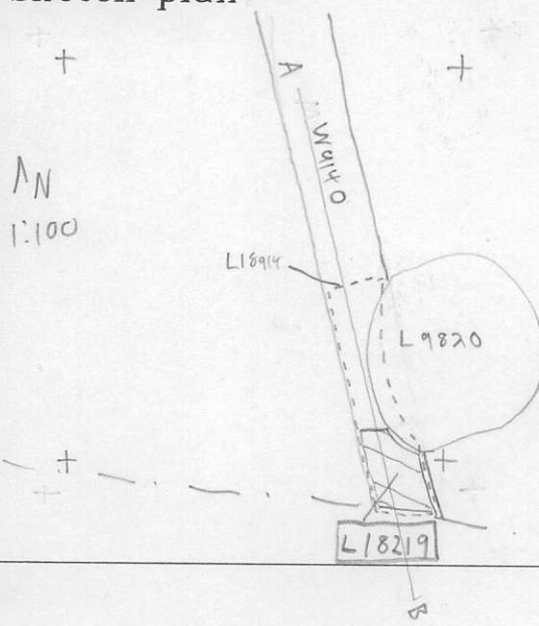
Matrix: Reddish brown mudbrick debris with burchar inclusions. Similar to destruction material below except no ash or yellow patches.

Relations: W9146 covers but due to erosion, does not seal L18219.
 W9140 also reaches L18219 from the north (see section).
 L18219 is cut by pit L9820 to the East. L18219 covers but does not seal destruction material in L18214 below. To the West.
 . To the East

Additional Observations/Value: Medium value. Material between W9140 and destruction layer

LOCUS
L 18219

Sketch plan



Photo

Photo

Section A-B Facing East

Section

