

Locus L18216	Dor 1977	Fld G	Sq A132	Loc. type Stone Slab Floor + Fill Below To Floor
Date Open 07/10/97 Close 07/11/97	High 12.94	at NE	Low 12.67	at S
Floor: type C	Width 3.0	SE	SW 12.74	SE
Length 6.0	Remove / / /	Vol	Drawn? Yes	
Value S				
Photo #(1) 166281	Photo #(2) 166282			
Written by: JEM	Checked by: JAZ			

Unit	Phase	Stage	Stratum	PoM
-------------	--------------	--------------	----------------	------------

Summary

Opened: Opened season. Decided to remove and excavate below F18088.

Limits (N) W9262
 (S) L9982, L9832
 (E) L18058, L9982,
 (W) W18048, L18214

Closed: Came down on F18216 (same as F9932). Changed to L18221 (partial)

Matrix: Large kurkar slabs between 0.3/0.5 m² and 6 cm thick. Matrix below floor is a mix of fine sandy white material (beach sand) and reddish brown mudbrick debris with kurkar inclusions.

Relations: L9832, L18061, L18068, L18087, and L18090 cover L18216. F18068 = F18061 = F18087 = F18090 seals L18216. L18216 reaches W9262 to the North, W18048 to the West, and installation L9982 to the east. L18216 continues south into mixed L18215. L18216 comes down on F18216 which also reaches W9262, W18048, and installation L9982. F18216 is continuous with **F18075 = 18058 = 18072 = 9795 on the east side of installation L9982. F18216 continues south under L18215. F18216 seals L18221. The fill of L9832 covers, and reaches* the stone floor makeup of L18216, while F9932 continues north under the stone makeup of L18216 as F18216.

* (if both covers and reaches L18216 as L9832 was partially dug down beside the stones of L18216 in order to define their edges)
 ** JAZ 02 Not true. F18216 probably leveling surface on top of which Trough facility built. These listed floors are what the destruction comes down on.

Additional Photos: #166283-5, 166757-166759
 Additional Observations/Value: High Value. Material below destruction floor.



166281



166282



166283



166284

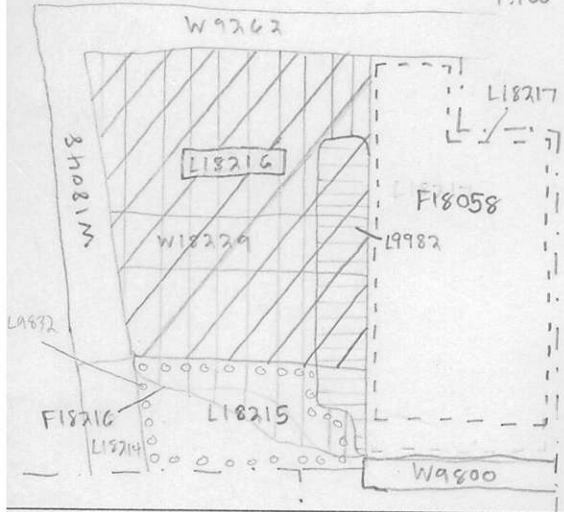


166285

Locus
L 18216

Sketch plan

MN
1:100



/// = L18216
 ||| = F18058
 ooo = L18215



166757

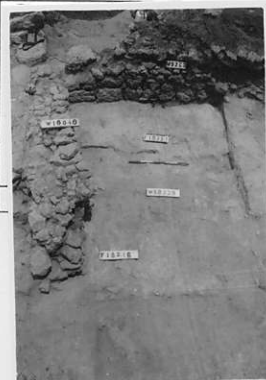


166759

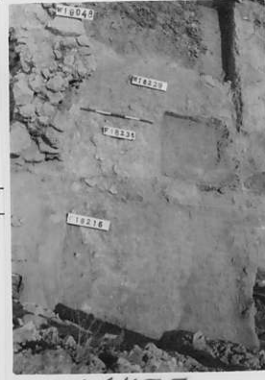
Photo



166758



166408



166437

tion