

Locus <u>L 18201</u>	Dor 19 <u>97</u>	Fld <u>G</u>	Sq <u>AH34</u>	Loc. type <u>ROBBER TRENCH</u>
Open Date <u>018/07/97</u>	High at <u>15.26 S</u>	Low at <u>15.04 N</u>	Seals: <u> </u> <u> </u> <u> </u> <u> </u>	
Close Date <u>115/07/97</u>	<u>14.81 N</u>	<u>14.79 S</u>	Sealed by: <u> </u> <u> </u> <u> </u> <u> </u>	
Floor: type <u> </u>	Length <u>1.98</u>	Width <u>0.45</u>	Vol <u> </u>	Loci <u>L18231</u> <u> </u> <u> </u> <u> </u>
Value <u> </u>	Remove <u> / / </u>	Drawn? <u>NO</u>		above <u> </u> <u> </u> <u> </u> <u> </u>
Photo #(1) ^{SEE} <u>L9231</u>	Photo #(2) ^{SEE} <u>L9231</u>			Loci <u>L18225</u> <u> </u> <u> </u> <u> </u> <u> </u>
Written by: <u>MAS</u>	Checked by: <u>JRZ</u>			below <u> </u> <u> </u> <u> </u> <u> </u>

Unit <u> </u>	Phase <u> </u>	Stage <u> </u>	Stratum <u> </u>	PoM <u> </u>
----------------	-----------------	-----------------	-------------------	---------------

Summary

Opened: L18201 WAS OPENED TO EXCAVATE POTENTIAL RT IN NW CORNER OF F9231.

Limits (N) BALK
 (S) F9231
 (E) F9231
 (W) W9253

Closed: THIS WAS CLOSED BECAUSE THE MATRIX WAS SIMILAR TO F18212. THIS WAS CONFIRMED IN POTTERY READINGS WHEN THE READING BECAME PRIMARILY PERSIAN AT 14.90M.

Matrix: LOOSE, LIGHT BROWN SOIL WITH TABUN FRAGMENTS AND SMALL CLUMPS OF ASH AND FLECKS OF ASH IN THE NORTH; LARGE AMOUNT OF POTTERY FOR SMALL AREA, VERY SIMILAR TO THE MATRIX OF L18210.

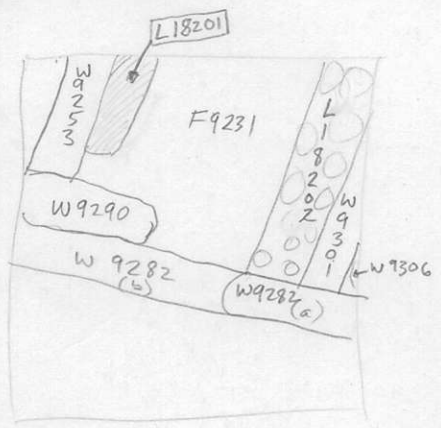
Relations: LOCUS ABOVE: L9231 PROBABLY CONTAINED MATERIAL OF THE RT L18201 BUT THIS WAS NOT DETERMINED AT THE TIME OF EXCAVATION OF L9231.
N: L18201 CONTINUES INTO BALK
E: L18201 CUTS F9231, L9231, L18210 AND L18212
S: L18201 CUTS L9231, F9231, L18210, L18212
N: L18201 REACHES W9253.
LOCUS BELOW: L18201 COVERS L18225.

* L18201 lowest part of RT of W9253 = L9228 = L9269

Additional Observations/Value: LOW VALUE. POST ROMAN.

Locus
L 18291

Sketch plan



L18201 = [shaded square symbol]

Photo		Photo	
Section		Section	