

Locus L 18089	Dor 19 ₉₄	Fld G	Sq 4534	Loc. type Floor Make-up
Open Date	High at	Low at	Seals: _____	
Close Date	High at	Low at	Sealed by: _____	
Floor: type CIE	High at	Low at	Loci 18065 9903	
Length 2.5	Width 1.7	Vol	above _____	
Value S	Remove 15/18/94	Drawn? Y, E, S	below _____	
Photo #(1) -	Photo #(2) -		Loci _____	
Written by: J, P, S	Checked by: J, R, Z		below _____	

Unit _____	Phase _____	Stage _____	Stratum _____	PoM _____
------------	-------------	-------------	---------------	-----------

Summary _____

Opened: To remove floor make-up of F18065 below L18065.

- Limits (N) Bounded on the North by the unexcavated material below W9216 and W9085 to the North.
 (S) Bounded by W9211 to the South.
 (E) Bounded by W9904 to the East.
 (W) Bounded by L9985 to the West.

Closed: Removed floor make-up down to brown mudbrick material below. (left unnumbered; end of season).

Matrix: Thin white plaster floor (1-3 mm thick) above 5 mm thick sand layer on ashy grey floor with charcoal flecks. Small amount of pottery, bone, shell, and flint present in floor make-up. Fish remains in small amount (1-5 fish) observed on lower grey ashy floor in SW corner.

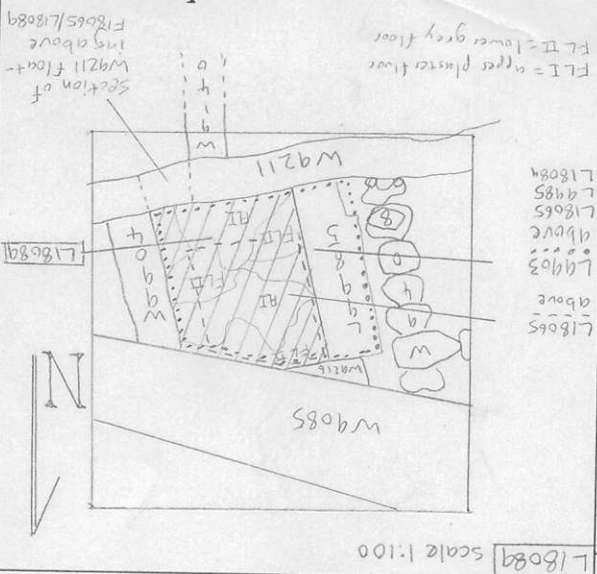
Relations: L18089 is covered by L18065 in the majority of the NW region of the locus. L9903 covers the remainder of the locus not covered by L18065, mainly at the eastern edge of L18089 and at the southern portion of the selfsame locus. L18089 continues into the unexcavated material below W9216 and W9085 to the North, reaches W9904 to the East and W9211 to the South. In the eastern portion of W9211 floats approx. 15 centimeters above the level of F18065/L18089. This occurs from a point on the northern side of W9211 equivalent to the extension of the eastern face of W9140 to the western face of W9904. Since F18065/L18089 reaches both W9211 + W9904, the aforementioned stretch of W9211 must be of a later construction since it is floating, suggesting that this area may represent a doorway or threshold. L9985 appears to cut F18065/L18089, even though L9985 was excavated in the '93 season and this relationship is presently difficult to discern and the mudbrick platform of L18065 does not appear to be cut in this area.

Additional Observations/Value: Floor make-up reaching phase 8 level walls relating to the "cult" locus 9903 and earlier material
 Mega High Value

Locus

L 18089

Sketch plan



Photo

Photo

Section

Section