

Locus L 18063	Dor 19 ₉₄	Fld G ₁	Sq A, K, 3, 3, 1, 1, 1, 1	Loc. type Floor Make-up and Fill to Floor
Open 2.6 / 17 / 94	High at 1.3.59 N/E	Low at 1.3.43 S/E	Seals: 18079 _____	
Close 0.1 / 18 / 94	1.3.54 S/E	1.3.34 N/E	Sealed by: 18015 _____	
Floor: type C/E	1.3.54 S	1.3.34 N/E	Loci 18015 18029 _____	
Length 2.8	Width 2.5	Vol _____	above _____	
Value S ₁	Remove 0.1 / 18 / 94	Drawn? Y, E, S	below _____	
Photo # (1) 117-756	Photo # (2) 117-757		Loci 18079 _____	
Written by: JYS	Checked by: _____		below _____	

Unit _____	Phase 7 ₆	Stage _____	Stratum _____	PoM _____
-------------------	-----------------------------	--------------------	----------------------	------------------

Summary _____

Opened: Came down on F18015 which extended partially below L18029. [L18063] opened as floor-make-up and fill below F18015 with L18029 shrinking and making a technical change to become L18062.

- Limits (N)** Bounded by the unexcavated material below W9510 to the North.
(S) Bounded by W9400 and the unexcavated material below W9066 to the South.
(E) Bounded by the unexcavated material below W9914 to the East.
(W) Bounded by W9975 and L18062 to the West.

Closed: Came down on F18063.

Matrix: Ashy grey material containing much pottery, bone and shell with more flint (worked and reduction flakes or shatter) than usually encountered. [F18063] is a grey ashy surface with charcoal flecks on it, somewhat brighter than the grey material above. F18015 is a dull grey ashy surface.

Relations: [F18063] is covered by L18015 and the portion of L18029 above F18015. F18015 seals [L18063]. [L18063] and L18062 cover L18079. [F18063], which extends below L18062, seals all of L18079. The material of L18062, without cutting on [F18063], cuts F18015 and the material of [L18063] down to [F18063] to the West. [L18063] is the continuation of the unexcavated material below W9510 to the North, W9914 to the East, and W9066 to the South. [L18063] reaches W9400 to the South and W9975 to the West. [F18063] reaches W9975 to the West and W9400 to the South. [F18063] continues into the unexcavated material below W9066 to the South, W9914 to the East, W9510 to the North, and below L18062 into the unexcavated material below L9604, W9510, L9663, and W9147. If W9975 continues northward into the unexcavated material below W9147, then [F18063] reaches W9975 in this area also but further excavation is required for clarification of this relationship. [F18063] seals all of L18079.

IS 02: = F9380 (#13.60-13.51)

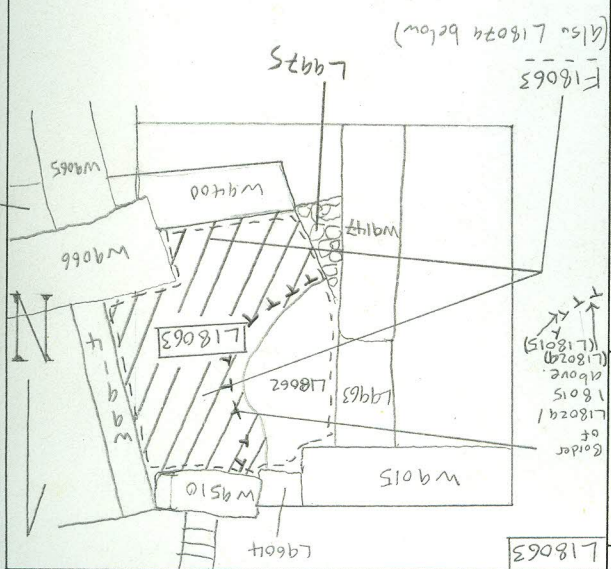
IS 08: prob. lower surface of F18015 (i.e. 7₆)

Additional Observations/Value: Sealed fill down to floor reaching phase 7 wall. High Value.

Additional Photo #s: 117-758, 117-759

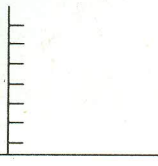
Locus
 L 181063

Sketch plan



117756

Section



117759

Section

