

Locus L 18062	Dor 19 ₉₄	Fld G ₁	Sq A, K, 3, 3, 1, 1, 1, 1	Loc. type Fallen Stone to Floor
Open	Date 2/6/17/94	High at 1.3.53 S/E	Low at 1.3.35 N/E	Seals: _____
Close	01/08/94	1.3.46 E	1.3.35 N/W	Sealed by: _____
Floor: type	CE	1.3.54 E	1.3.34 N/E	Loci 18029 _____
Length 2.1	Width 1.2	Vol _____	Drawn? N, O, 1	above _____
Value 4	Remove 01/08/94			Loci 18079 _____
Photo # (1) 117-756	Photo # (2) 117-757			below _____
Written by: J. K. S.	Checked by: _____			

Unit _____	Phase 7b	Stage IV	Stratum _____	PoM _____
------------	----------	----------	---------------	-----------

Summary

Opened: Came down on F18015 at eastern edge of L18029 above. Remaining stones of L18029 to the West renamed [L18062] after excavated below level of F18015.

Limits (N) Bounded by the unexcavated material below W9015 and L9604 to the North.
 (S) Bounded by L18063 to the South.
 (E) Bounded by L18063 to the East.
 (W) Bounded by W9975 and the unexcavated material below W9147 + L9663 to the West.

Closed: Came down on F18063.

Matrix: Fallen fieldstone, small (15-20cm) and large (30-40cm) fieldstones loosely dispersed in light brown sandy mudbrick material containing much pottery bone shell and flint with some burnt seed.

Relations: [L18062] is the continuation of the material of L18029, which covers [L18062]. [L18062] covers the NW portion of L18079, which includes the make-up of F18063. The material of [L18062] reaches and may be fall from W9975 to the SW and continues into the unexcavated material below below W9147 and L9663 to the West. The material West of [L18062] and North of W9975 may actually be the northern extension of W9975, in which case [L18062] could reach this matrix of stones and most likely be fall from it. This relationship is unclear at this time and would require further excavation in L9663 to determine if W9975 does indeed extend to the North. [L18062] cuts the material of L18063 to the West and South. [L18062] comes down on the extension of F18063, which extends beneath all of [L18062].

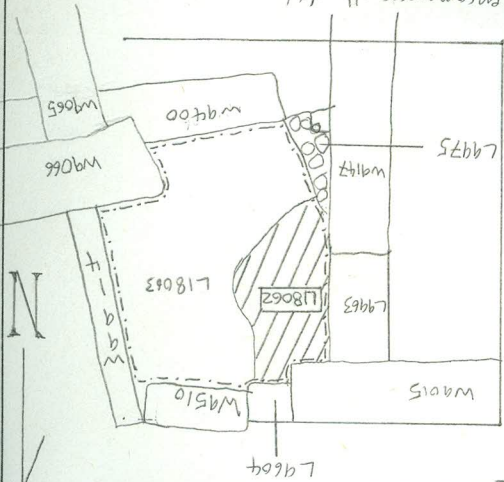
Additional Observations/Value: Fallen stone on Phase 7/8 floor containing some pottery. Medium Value.
IS 58: more prob. 7

Additional Photo #s: 117-758, 117-759

Locus
 L 18062

Sketch plan

F18063 encompasses all of the area covered by L18062 and 18062. L18063 is covered by F18063 (including floor material of F18063).



117757

Section



857711

Section

