

Locus L18040	Dor 19 <sub>16</sub>	Fld 6 <sub>1</sub>	Sq A1333	Loc. type Horizontal Twilight Zone To Floor
Open	Date 11/16/94	High at 13.54	Low at 13.40	Seals: _____
Close	26/07/94	13.39	13.31	Sealed by: _____
Floor: type	CIP	13.37	13.31	Loci
Length	1.4	Width 1.3	Vol	above
Value	?id	Remove 26/07/94	Drawn? 1101	below
Photo #(1)	117-675	Photo #(2)	117-676	Loci
Written by: J.Y.S	Checked by: J.R.Z			below

Unit	Phase 8/277	Stage	Stratum	PoM
------	-------------	-------	---------	-----

Summary

Opened: To create a horizontal twilight zone to account for erosional intrusion south of pit L9251 and around W9886. Also to find the southern continuation of F18021.

Limits (N) Bounded in the North by L18021.

(S) Bounded on the South by W9262.

(E) Bounded on the East by W9275.

(W) Bounded on the West by W9886 and W9140.

Closed: Came down on F18021.

Matrix: Dry dark grey mudbrick material.

Relations: L18040 is covered by L9873. F18021 extends below L18040, which comes down on F18021. L18040 covers L18067. L18040 reaches W9886 and W9140 to the West. L18040 is the continuation of the material of L18021 to the North. L18040 reaches W9275 and W9262 to the East and South, respectively. Below L18040 F18021 reaches W9275 and W9262 and extends at least partially under W9886.

Additional Observations/Value: Horizontal Twilight Zone down to Floor.  
Medium Value

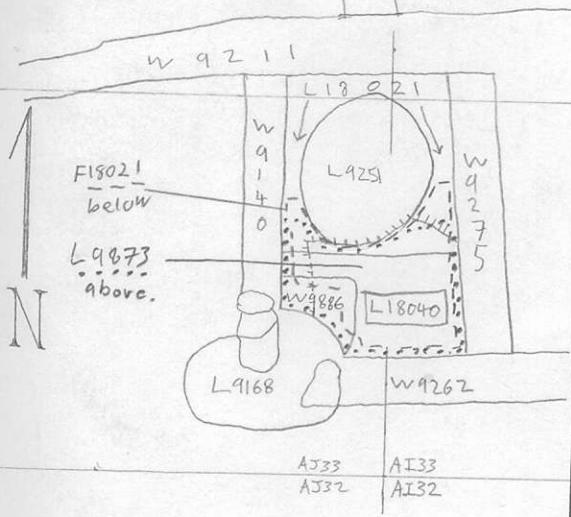
Additional Photo #s: 117-677, 117-678

LOCUS

L 1810140

Sketch plan

Scale 1:100



Photo

Photo

Section

Section

P2 P3

1 ir2a