

Locus L 18020	Dor 1914	Fld 6	Sq A131	Loc. type MUDBRICK FILL BELOW FLOOR		
Open	Date 11/07/14	High at 12.91	N	Low at 12.85	SW	Seals: _____
Close	12/07/14	12.85	N	12.84	SW	Sealed by: _____
Floor: type						Loci L18016 _____
Length 1.0	Width 1.2	Vol _____				above _____
Value 10	Remove 12/07/14	Drawn? 100				Loci L18033 _____
Photo #(1) none		Photo #(2) _____				below _____
Written by: JCM		Checked by: JAZ				

Unit _____	Phase _____	Stage _____	Stratum _____	PoM _____
------------	-------------	-------------	---------------	-----------

Summary

Opened: NOTICED FLOOR IN SOUTHEASTERN BULK POSSIBLY RUNNING UNDER W9963 WHILE EXCAVATING L18016. CHANGED TO L18020

Limits (N) L18009
 (S) W9963
 (E) W9964
 (W) BULK below drain L9025.

Closed: CAME DOWN ON DESTRUCTION LAYER. COLLAPSED WITH L18009, L18017, L18018 AND W9964 TO L18033.

Matrix: DARK BROWN, VERY DENSE MUDBRICK MATERIAL WITH OCCASIONAL REMAINS OF YELLOW/ORANGE TRACER BRICK. MORE DENSE THAN L18016 ABOVE SAME AS L18009 TO THE NORTH. DIFFERS FROM BRIGHT RED AND ORANGE DESTRUCTION BELOW (L18033). F18016 IS ORANGE CRUSHED KURKAR.

Relations: L18016 COMES DOWN ON PHANTOM F18016, L18016/F18016 COVER BUT DO NOT SEAL L18020. L18020 CONTINUES NORTH AS L18009, AND CONTINUES EAST UNDER W9964, AND SOUTH UNDER W9963 L18020 COVERS BUT DOES NOT SEAL L18033. To the West L18020 continues into the bulk below drain L9025.

Additional Observations/Value: FILL BELOW PHANTOM FLOOR, LOW VALUE

Locus Basket List

No.	Sq.	Comments	Req. Ele.	Clo. Ele.
180235	A131	pottery.	13.18	12.95
180236	A131	metal.	13.18	12.95
180289	A131	bone.	13.18	12.95
180291	A131	flint.	13.18	12.95
180294	A131	pottery.	12.96	12.84
180295	A131	bone.	12.96	12.84
180296	A131	flint.	12.96	12.84
180302	A131	metal.	12.96	12.84

Locus
L18020

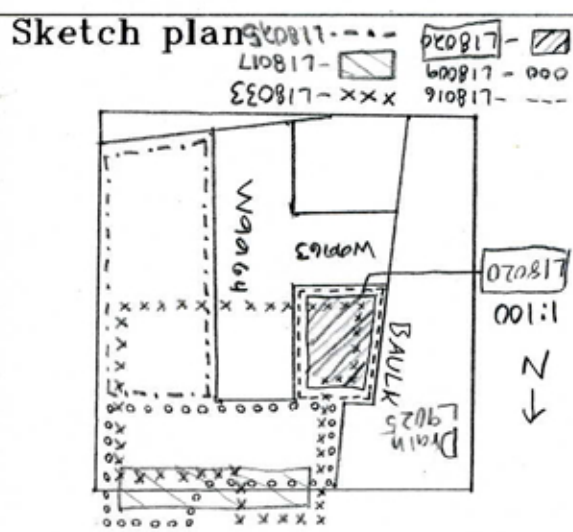


Photo	Photo
Section	Section