

Locus <u>L 18007</u>	Dor <u>1914</u>	Fld <u>6</u>	Sq <u>A131</u>	Loc. type <u>Mudbrick Debris</u>
Open <u>05/17/94</u>	High <u>1.3.39</u>	at <u>W</u>	Low <u>1.3.38</u>	at <u>E</u>
Close <u>06/07/94</u>	<u>1.3.16</u>	<u>E</u>	<u>1.3.13</u>	<u>W</u>
Floor: type _____	Length <u>0.4</u>	Width <u>0.9</u>	Vol _____	Seals: _____
Value <u>N</u>	Remove <u>06/07/94</u>	Drawn? <u>NO</u>	Loci <u>L9911</u>	above _____
Photo #(1) <u>117109</u>	Photo #(2) <u>117110</u>	Loci <u>18009</u>	below _____	
Written by: <u>JCM</u>	Checked by: <u>JRT</u>			

Unit _____	Phase _____	Stage _____	Stratum _____	PoM _____
------------	-------------	-------------	---------------	-----------

Summary _____

Opened: OPENED TO DEFINE THE RELATION BETWEEN W9952 and W9664

Limits (N) L9991
 (S) W9952, W9964
 (E) L9984
 (W) L9966

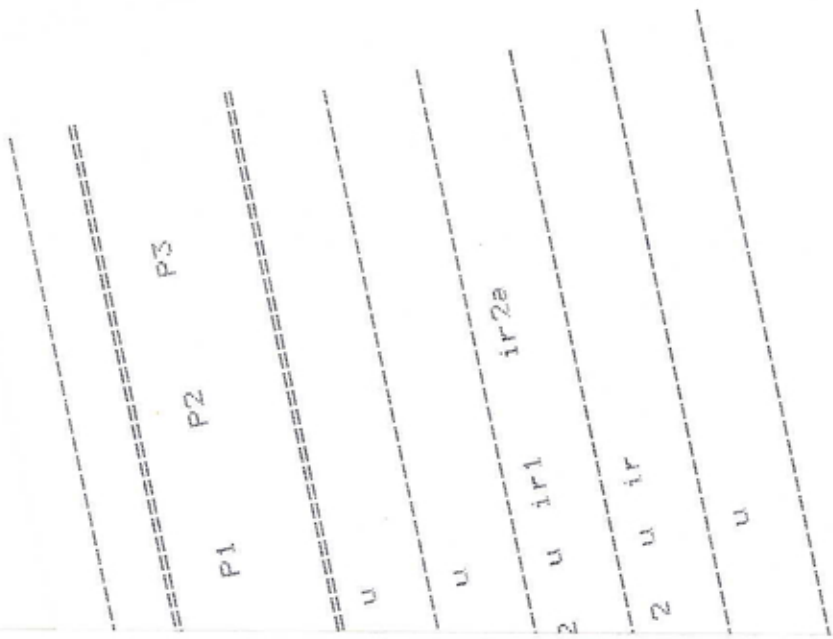
Closed: FUGA LINE (WHITE) FOUND AT BASE OF W9964 CUTTING SLIGHTLY NORTH OF W9952

Matrix: DARK BROWN MUDBRICK MATERIAL WITH FEW CERAMICS AND SOME METAL FRAGMENTS

Relations: MUDBRICK DEBRIS IN L9911 CONTINUES DOWN AS L18007. THE MATERIAL IN L9984 CONTINUES EAST INTO L18007. MUDBRICK DEBRIS CONTINUES DOWN UNDER L9984. L18007 CONTINUES WEST INTO L9966. L18007 REACHES THE WASH DEPOSIT L9910 TO THE NORTH. A FUGA LINE (OR POSSIBLE WHITEWASH) FOUND TOWARDS THE NORTH END OF L18007 DURING EXCAVATION INDICATES THAT W9952 WAS INDEED BUILT ATOP THE APPROXIMATE END OF W9664. L18007 COVERS BUT DOES NOT SEAL L18009 AS THE TWO MAY BE SEPARATED BY PHANTOM FLOOR F18016.

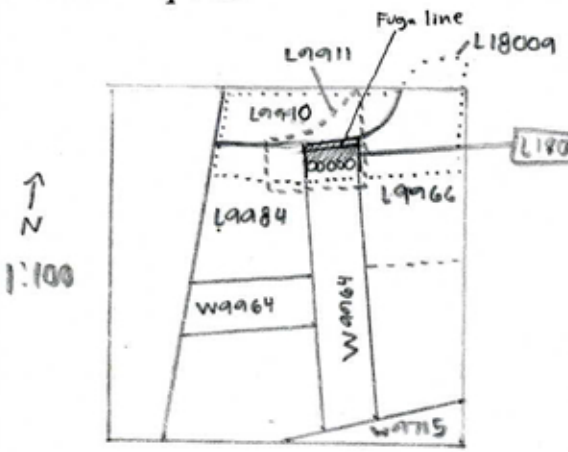
ADDITIONAL PHOTOS: 117111-117114

Additional Observations/Value: HIGH VALUE IN DEFINING RELATION BETWEEN W9952 AND W9964



Locus
 L 1,899,7

Sketch plan



Photo

Photo

Section

Section