

AREA: KKT.N	GRID SQUARE (S): Z01D11	GRID CO-ORDINATES: E N	INITIALS & DATE: HAHA 21 ii 2012	FEATURE No.: 33783
-----------------------	-----------------------------------	--	--	------------------------------

FEATURE TYPE (For example wall, staircase, bench, foundation structure, platform etc.): Block event	Full extent visible in plan: <input checked="" type="radio"/> YES / NO
---	---

1. Dimensions (in metres)	Length: 0.60M	Width: 0.40M	Height: 0.09M
---------------------------	-------------------------	------------------------	-------------------------

2. Type of material(s) used	Mud brick and Lime Stone
-----------------------------	---------------------------------

3. Coursing (form of construction)	Two mudbrick unit and also Two Lime Stone
------------------------------------	--

4. Orientation	E-W
----------------	------------

5. Associated collapse	—
------------------------	---

6. Cut & fill feature #'s	—
---------------------------	---

7. Repaired?	—
--------------	---

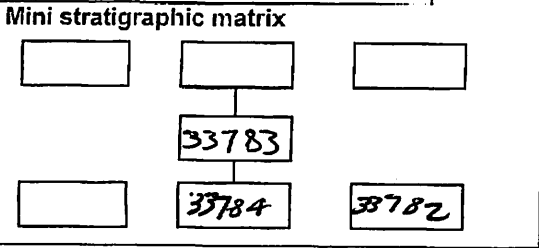
8. Associated floors	—
----------------------	---

9. Surface treatments? E.g. plaster, paint, mouldings	—
---	---

10. Size of one component	0.40M Long by 0.18M width by 0.09M elevation
---------------------------	---

11. Bonding material	sandy silt
----------------------	-------------------

12. Excavated	Yes/No Not Excavated
---------------	-----------------------------



Abuts: **<337847 <33782** Same as:

Abutted by: Associated features:

Bonded into:

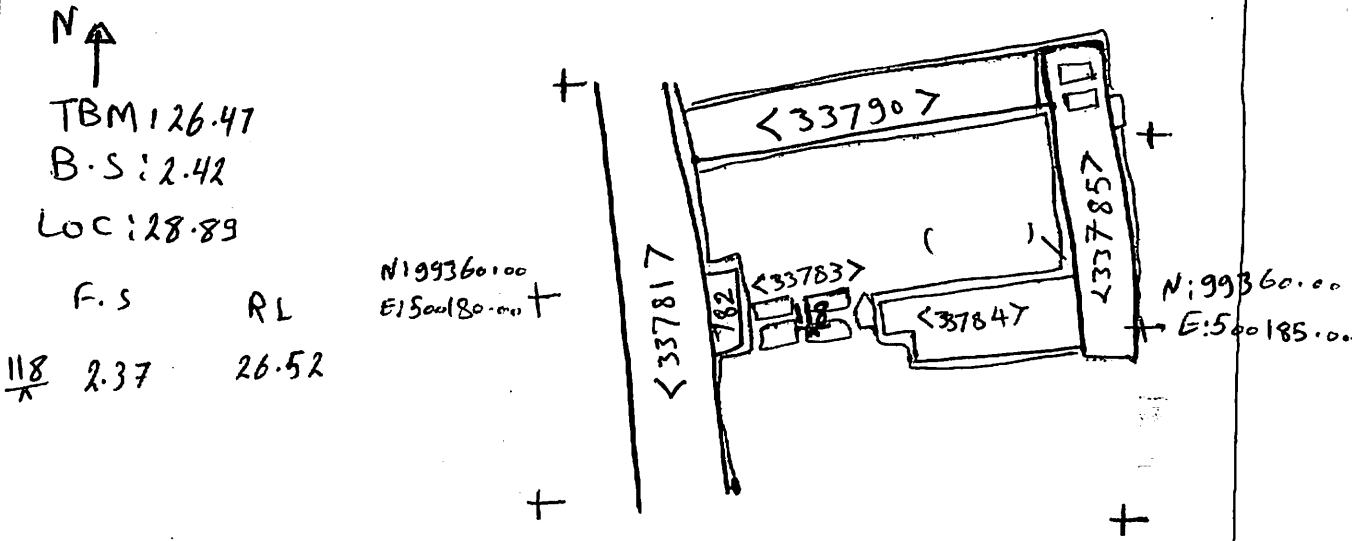
Contiguous with:

Discussion and interpretation:

This Blocking event is made of mudbrick. it is E-W orientated. and it abutes the door jamb (33782). it is measures 0.60m lenght and 0.40m width. it's consists of Two mudbricks unit and also Two lime stone.

Remember: do not just draw the architectural feature in isolation. Show how it relates to surrounding features and include details of surface treatments, repairs/modifications/damage, bonding material(s), and associated cuts. Annotate all aspects of the feature or use a Drawing Key. Measurements must be included for all aspects of the feature and surrounding features.

Sketch Plan - Include grid co-ordinates, North arrow, and elevations.



Profile Sketch - State direction the elevation of the feature being drawn is facing e.g. 'West Facing Elevation of Feature If feature was drawn in section then include the grid co-ordinates and elevations.

Drawing No.'s: 2012-4	Photo No.'s: 513110-513111-513114
Space No.: 11321, 11323	Structure No.: House A
Matrix Group:	Matrix Phase: 3
Samples taken:	