

AREA: <b>KKT-N</b>	GRID SQUARE (S): <b>201C12</b> <b>201D12</b>	GRID CO-ORDINATES: <b>E</b> <b>N</b>	INITIALS & DATE: <b>AFAM</b> <b>26ii 2012</b>	FEATURE No.: <b>33779</b>
-----------------------	--	--	---	------------------------------

FEATURE TYPE (For example wall, staircase, bench, foundation structure, platform etc.): <b>Door jamb</b>	Full extent visible in plan: <b>YES / NO</b>
---	---

1. Dimensions (in metres)	Length: <del>the visible length</del> <b>0.19 m</b>	Width: <b>0.20 m</b>	Height: <b>0.4 m</b>
---------------------------	--	-------------------------	-------------------------

2. Type of material(s) used	<b>mud brick</b>
-----------------------------	------------------

3. Coursing (form of construction)	
------------------------------------	--

4. Orientation	<b>N-S</b>
----------------	------------

5. Associated collapse	<b>—</b>
------------------------	----------

6. Cut & fill feature #'s	<b>—</b>
---------------------------	----------

7. Repaired?	<b>—</b>
--------------	----------

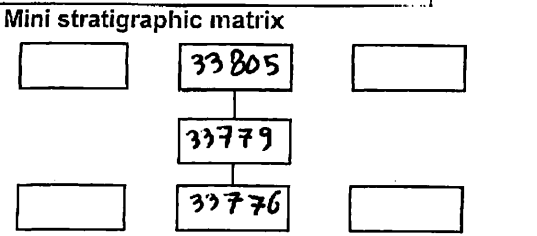
8. Associated floors	<b>—</b>
----------------------	----------

9. Surface treatments? E.g. <u>plaster</u> , paint, mouldings	<b>(33805)</b>
---	----------------

10. Size of one component	
---------------------------	--

11. Bonding material	<b>sandy silt</b>
----------------------	-------------------

12. Excavated	<b>Yes/No</b>
---------------	---------------

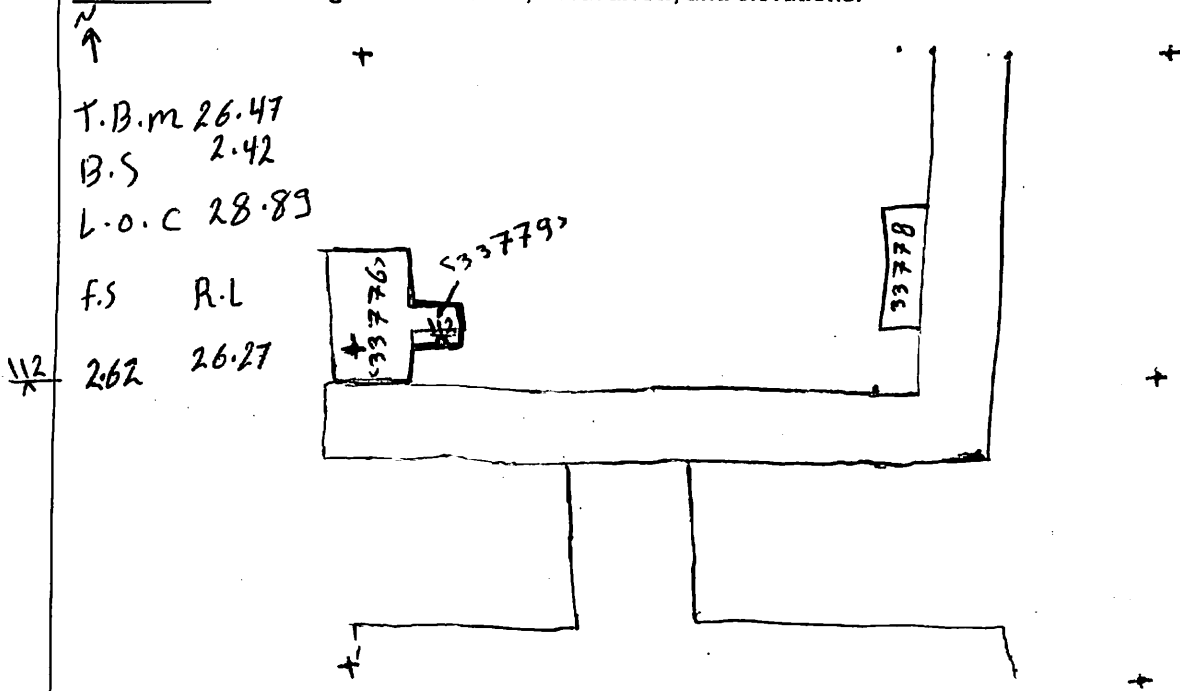


Abuts: <b>&lt;33776&gt;</b>	Same as:
Abutted by:	Associated features:
Bonded into:	
Contiguous with:	

Discussion and interpretation:  
 it's a mud brick door <sup>jamb</sup> N to S orientated. this door jamb abuts wall <33776>. Coated by plaster (33805). & it is almost eroded.

Remember: do not just draw the architectural feature in isolation. Show how it relates to surrounding features and include details of surface treatments, repairs/modifications/damage, bonding material(s), and associated cuts. Annotate all aspects of the feature or use a Drawing Key. Measurements must be included for all aspects of the feature and surrounding features.

Sketch Plan - Include grid co-ordinates, North arrow, and elevations.



Profile Sketch - State direction the elevation of the feature being drawn is facing e.g. 'West Facing Elevation of Feature .... If feature was drawn in section then include the grid co-ordinates and elevations.

Drawing No.'s: 2012-4	Photo No.'s: 513109-513110-513119
Space No.: 11322	Structure No.: house A
Matrix Group:	Matrix Phase: 4b
Samples taken:	