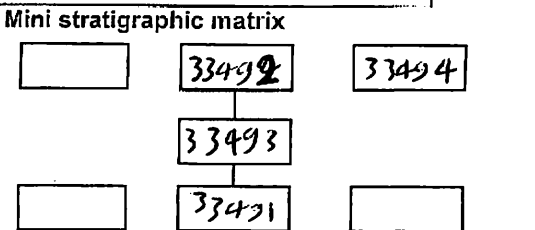


AREA: Kkt-N	GRID SQUARE (S): 201E15-14	GRID CO-ORDINATES: E N	INITIALS & DATE: MFMH 5-2-2012	FEATURE No.: 33493
-----------------------	--------------------------------------	------------------------------	--	------------------------------

FEATURE TYPE (For example wall, staircase, bench, foundation structure, platform etc.): wall	Full extent visible in plan: <input checked="" type="radio"/> YES / NO
--	---

1. Dimensions (in metres)	Length: 2.50m	Width: 0.65 m	Height: 0.05 m
2. Type of material(s) used	mudbrick		
3. Coursing (form of construction)	Two courses		
4. Orientation	N-S		
5. Associated collapse	—		
6. Cut & fill feature #'s	—		
7. Repaired?	—		
8. Associated floors	—		
9. Surface treatments? E.g. plaster, paint, mouldings	—		
10. Size of one component	0.40 m by 0.20 m		
11. Bonding material	Sandy silt		
12. Excavated	Yes <input checked="" type="radio"/> No <input type="radio"/>		



Abuts: **<33491>** Same as:

Abutted by: **<33494>** Associated features:

Bonded into:

Contiguous with:

Discussion and interpretation:

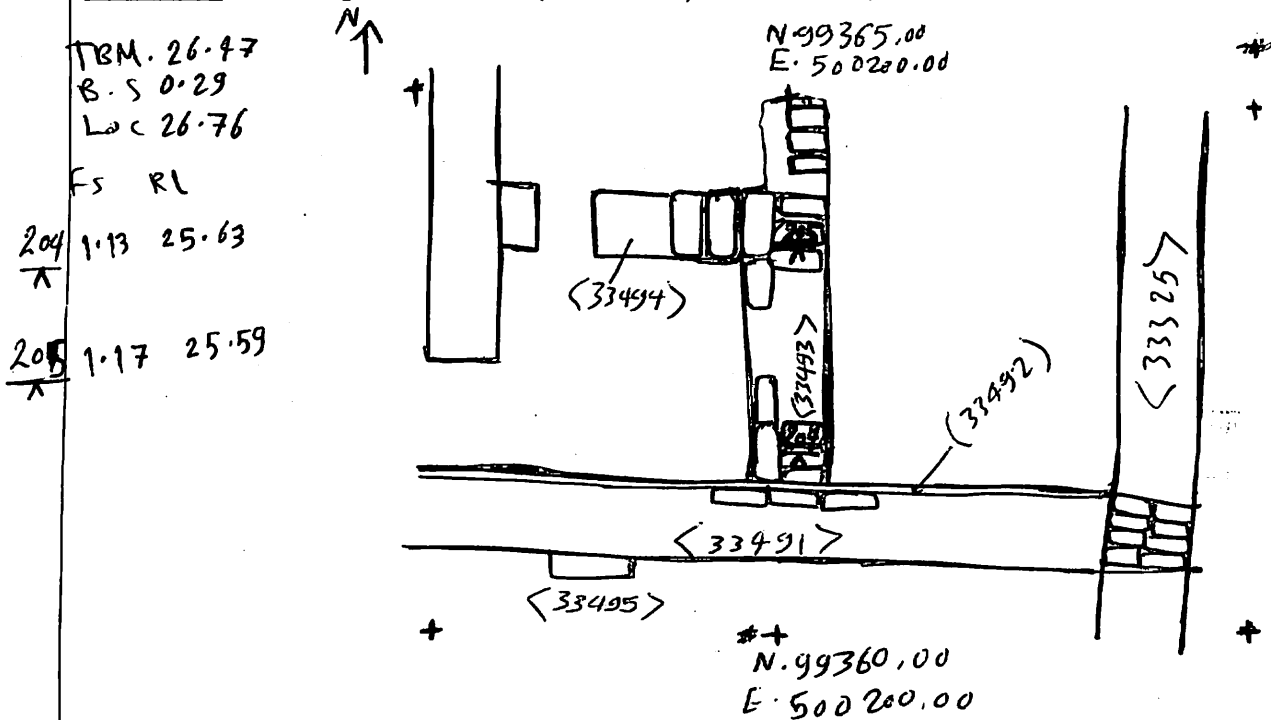
It is a mudbrick wall (N-S), it measures 2.50m length by 0.65 m width, it consists of two courses of mudbrick, the western face is stretchers, and the eastern one is headers. It abuts the wall **<33491>** and is abuted by **<33494>**.

We notice that, this wall was a modified event to divide the space into three spaces (11307, 11308, 11310), it may to locate those spaces in an independent functions; because there is a plaster layer between this wall and the wall **<33491>**.

It is clearly that, the second half of this wall of its northern face is eroded.

Remember: do not just draw the architectural feature in isolation. Show how it relates to surrounding features and include details of surface treatments, repairs/modifications/damage, bonding material(s), and associated cuts. Annotate all aspects of the feature or use a Drawing Key. Measurements must be included for all aspects of the feature and surrounding features.

Sketch Plan - Include grid co-ordinates, North arrow, and elevations.



Profile Sketch - State direction the elevation of the feature being drawn is facing e.g. 'West Facing Elevation of Feature If feature was drawn in section then include the grid co-ordinates and elevations.

Drawing No.'s: 2012-2	Photo No.'s: 512731, 512732
Space No.: (11307, 11308, 11310)	Structure No.: house (B)
Matrix Group:	Matrix Phase: 6
Samples taken:	