

AREA: KKT.N	GRID SQUARE (S): 201C17 201D17	GRID CO-ORDINATES: E N	INITIALS & DATE: HAAA MFMH 24/11/2012	FEATURE No.: 33460
FEATURE TYPE (For example wall, staircase, bench, foundation structure, platform etc.): wall			Full extent visible in plan: <input checked="" type="radio"/> YES / NO	
1. Dimensions (in metres)		Length: 3.30 M	Width: 0.70 M	Height: 0.05 m
2. Type of material(s) used		Mud brick		
3. Coursing (form of construction)				
4. Orientation		S-N		
5. Associated collapse		-		
6. Cut & fill feature #'s		-		
7. Repaired?		-		
8. Associated floors		-		
9. Surface treatments? E.g. plaster, paint, mouldings		-		
10. Size of one component		0.40 M X 0.20 M		
11. Bonding material		Sandy silt		
12. Excavated		Yes/No Not Excavated		
Mini stratigraphic matrix <pre> graph TD A[] --- B[] B --- C[33460] C --- D[33288] D --- E[] </pre>		Abuts: <33288> Same as: Abutted by: Associated features: Bonded into: <332887> Contiguous with:		
Discussion and interpretation: It is a wall of mud brick, it is located between Rooms ^{11283 & 11284} 55, 58 , it forms the eastern wall of the room 11285 and forms the western wall of the two rooms 11283, 11284. There is a door jamb abuts this wall <33463>, we notice also the wall <33460> is bonding into the wall <33461> and is bonding into the main wall <33288>. at the beginning, the terraces of this wall and the wall <33462> wasn't clear, but according to the map of "selim Hassan", we continued cleaning and then, we could those walls.				

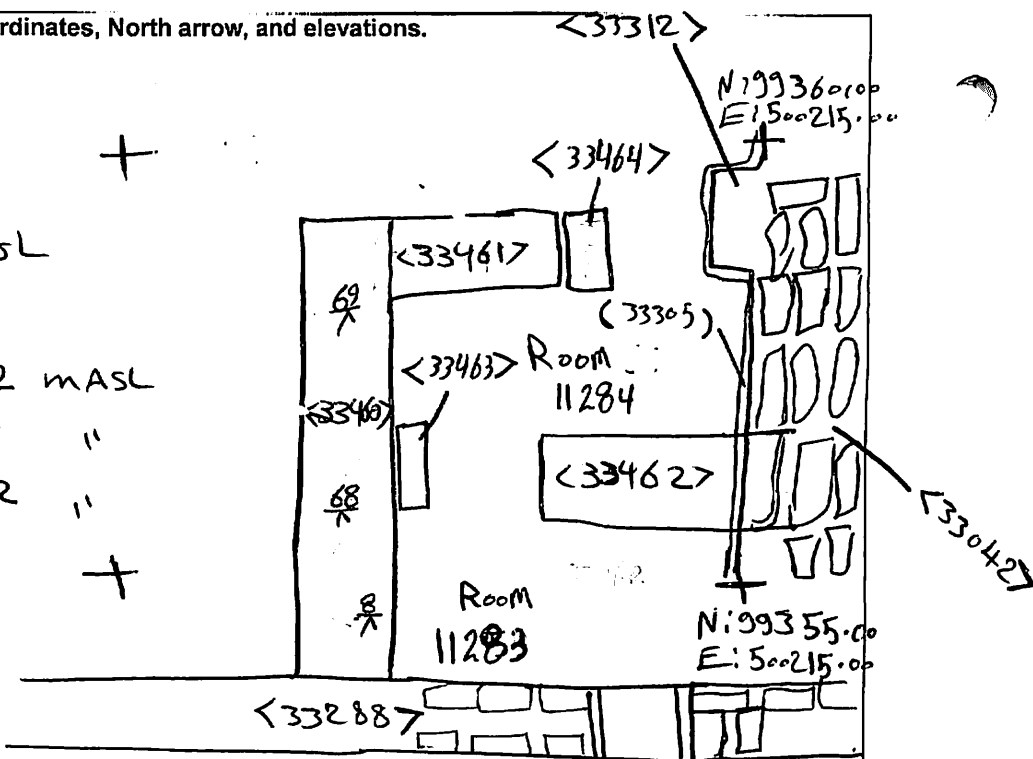
Remember: do not just draw the architectural feature in isolation. Show how it relates to surrounding features and include details of surface treatments, repairs/modifications/damage, bonding material(s), and associated cuts. Annotate all aspects of the feature or use a Drawing Key. Measurements must be included for all aspects of the feature and surrounding features.

Sketch Plan - Include grid co-ordinates, North arrow, and elevations.



TBM: 26.47
 B-S: 0.29
 Loc: 26-76 mASL

	F.S	RL	
8	2.74	24.02	mASL
68	2.69	24.07	"
69	2.54	24.22	"



Profile Sketch - State direction the elevation of the feature being drawn is facing e.g. 'West Facing Elevation of Feature If feature was drawn in section then include the grid co-ordinates and elevations.

Drawing No.'s: 2012-1	Photo No.'s: 512484
Space No.: 11283/11284/11285/11286	Structure No.: House C
Matrix Group:	Matrix Phase: 4b
Samples taken:	