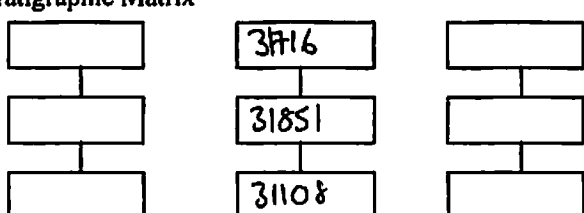


5

Site: GPMP 2009 Area: ISKT-N	GRID SQUARE(S) 201-D21	ARCHITECTURE	FEATURE 31851
1. Material	1/. MUDBRICK 2/. — 3/. —		
2. Size of materials	4/. 4 COURSES OF BRICKS MADE OF STRUCTURES OUTSIDING		
3. Finish	ONE AND A HALF BRICKS.		
4. Coursing/bond	5/. BUTTRESS AGAINST WALL (31108) POSSIBLY TO MARK		
5. Form	WHOLE (31102) WAS TO BUTT NORTHERN CAUSEWAY		
6. Direction of faces	WALL.		
7. Orientation	6/. N		
8. Dimensions	7/. E-W		
9. Associated collapse	8/. LENGTH= 0.63m; WIDTH= 0.19m; HEIGHT= 0.59m		
10. Founds, cuts & fills	9/. — 10/. — 11/. — 12/. — 13/. —		
11. Repaired	14/. — 15/. 100% NILE CLAY 16/. DARK CLAY		
12. Associated floors	NILE CLAY 17/. 370x160x130mm		
13. Plastered			
14. Wall core			
15. Types of brick (%)			
16. Composition of bricks			
17. Dimensions of bricks (sample of three)			

Stratigraphic Matrix	Abuts <31108>	Above
	Abutted by <31102>	Below
	Bonded into	
	Contiguous with	

INTERPRETATION	Enclosing	Internal	External
Reason for decay	SUB OF WALL AGAINST <31108>. FORMS BUTTRES		
Indications of original dimensions	AGAINST NORTHERN CAUSEWAY WALL		
Indications of original functions			

Associated contexts:

Context Same As:

Drawing Nos: 2009-166.

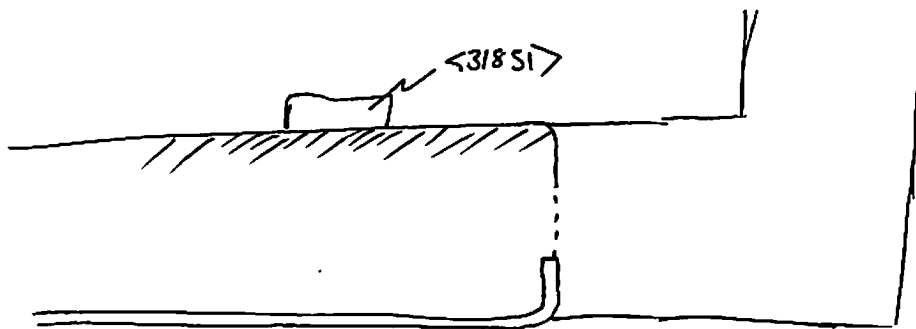
Photographs (feature in plan, elevation, materials used, surface treatment e.g. plaster, paint etc.)	Finds		Samples (flotation, wet sieve, materials used e.g. bricks, stone, wood, bonding material etc.)	
	Bag No.	Description	Bag No.	Description
Photograph No.	Description			
		Phase:	Checked	Initials LMJ Date 2iii 09

Sa

Sketch Drawings (in plan and in profile)

Remember: do not just draw the architectural feature in isolation. Show how it relates to surrounding features and include details of surface treatments, repairs/modifications/damage, bonding material(s), and associated cuts. Annotate all aspects of the feature or use a Drawing Key. Measurements must be included for all aspects of the feature and surrounding features.

Sketch Plan - Include grid co-ordinates, North arrow, and elevations.



Profile Sketch

- State direction the elevation of the feature being drawn is facing e.g. 'West Facing Elevation of Feature ...
- If feature was drawn in section then include the grid co-ordinates and elevations.

