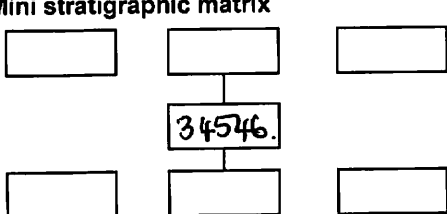
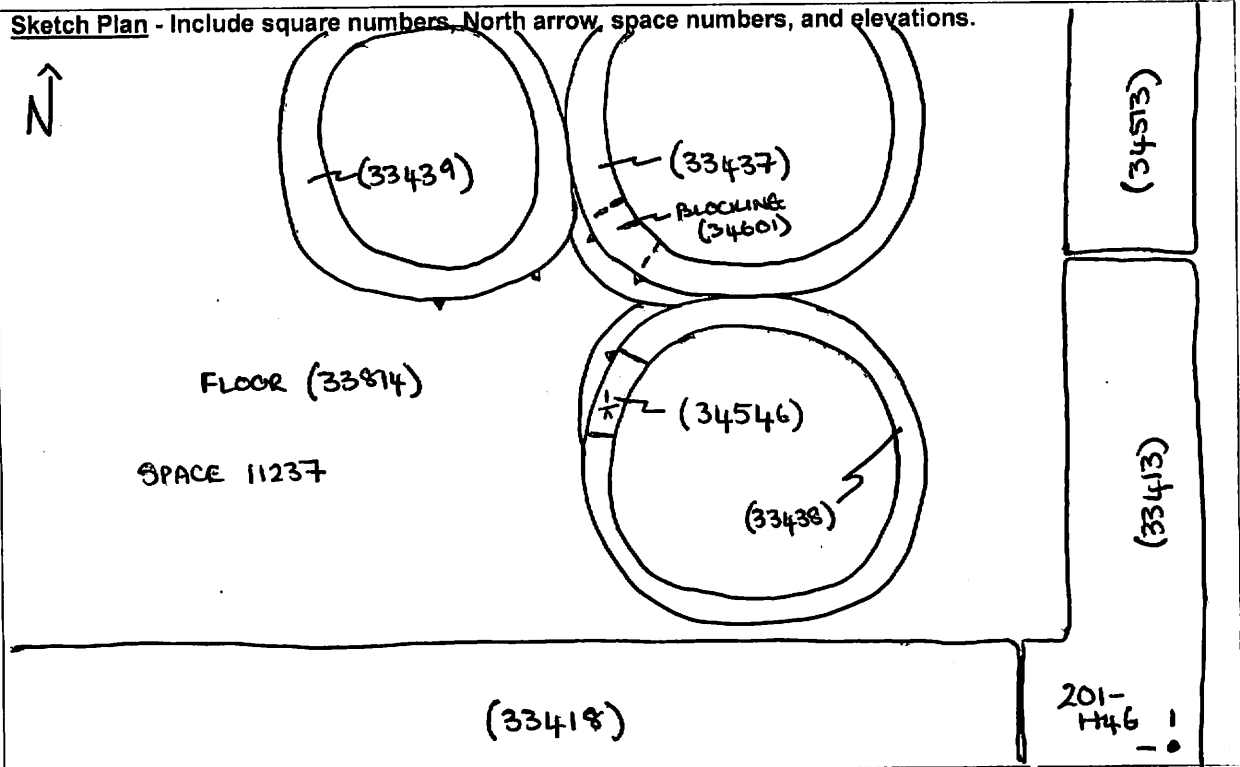
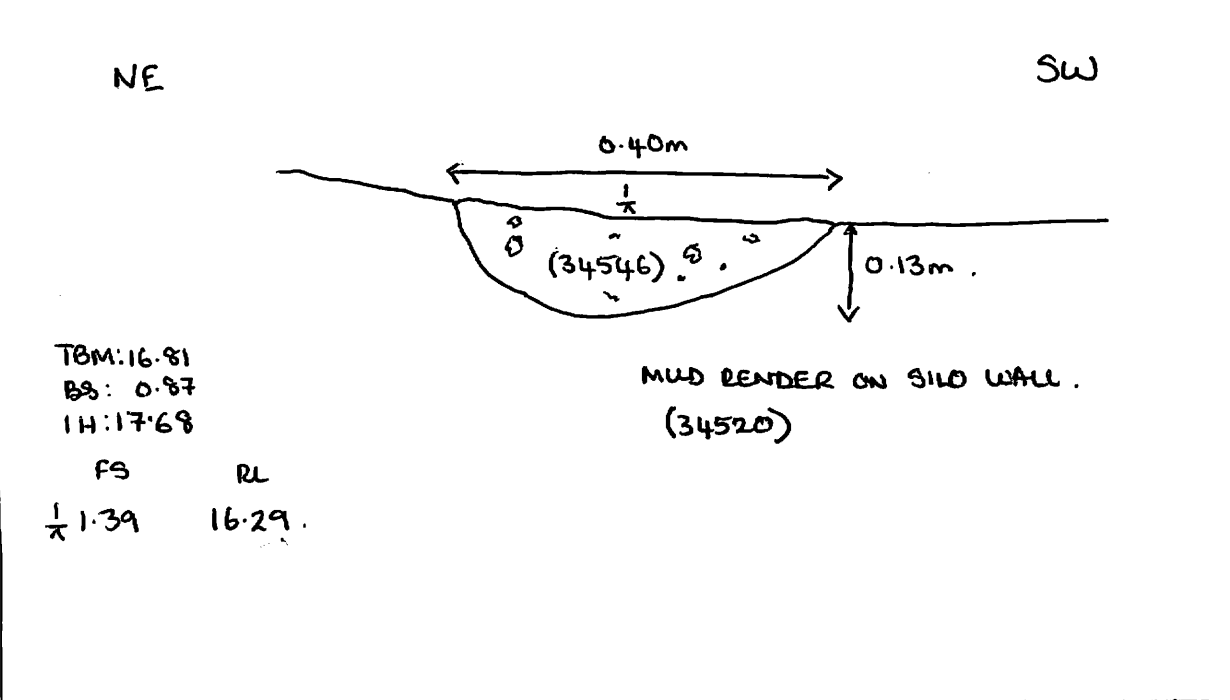


AREA: KKT-E+	GRID SQUARES: 201-H46	INITIALS & DATE: DCJ 07 APRIL 2014	FEATURE No.: 34546
FEATURE TYPE (For example wall, staircase, bench, foundation structure, platform etc.): BLOCKING		Full extent visible in plan: YES / <input checked="" type="radio"/> NO	
1. Dimensions (in metres)	Length: 0.40m	Width: 0.13m	Height: 0.13m
2. Type of material(s) used	SILTY CLAY		
3. Coursing (form of construction)	SILTY CLAY MIXED WITH OCC LIMESTONE CHIPS		
4. Orientation	—		
5. Associated collapse	POSSIBLY (33255)		
6. Cut & fill feature #'s	CUT - UNKNOWN		
7. Repaired?	UNKNOWN		
8. Associated floors	(33814)		
9. Surface treatments? E.g. plaster, paint, mouldings	NONE.		
10. Size of one component	—		
11. Bonding material	NONE.		
12. Excavated	<input checked="" type="radio"/> Yes <input type="radio"/> No 100%.		
Mini stratigraphic matrix 	Abuts: Abutted by: Bonded into: Contiguous with:	Same as: Associated features:	
Discussion and interpretation: <p>POSSIBLE BLOCKING OF OPENING IN WALL OF SILO (33438).</p> <p>COMPARE WITH BLOCKING (34601) OF OPENING IN WALL OF SILO (33437).</p>			

Remember: do not just draw the architectural feature in isolation. Show how it relates to surrounding features and include details of surface treatments, repairs/modifications/damage, bonding material(s), and associated cuts. Annotate all aspects of the feature or use a Drawing Key. Measurements must be included for all aspects of the feature and surrounding features.



Profile Sketch - State direction the elevation of the feature being drawn is facing e.g. 'West Facing Elevation of Feature If feature was drawn in section then include the grid co-ordinates and elevations.



Drawing No.'s: 2014-34546	Photo No.'s: 815267, 815268, 815269, 815321, 815322.
Space No.: 11237	Structure No.: 15124
Matrix Group:	Matrix Phase:
Samples taken: 2014-609 FLOTATION 100%.	Sondage No.: 183