

GPMP GIZA

Site: <b>SAPS 2/LTM</b> Area: <b>KKT-N</b>		GRID SQUARE(S) <b>201-E21</b>	ARCHITECTURE	FEATURE <b>34384</b>
1. Material	1) MIXED. DESCRIBED ON FEATURE FORM (31136) AS "MID-			
2. Size of materials	2) SEE #1			
3. Finish	3) IRREGULAR			
4. Coursing/bond	4) "			
5. Form	5) WALL CORE			
6. Direction of faces	6) N/A			
7. Orientation	7) N/A			
8. Dimensions	8) 2.01m (L) X 0.26m (W)			
9. Associated collapse	9) UNKNOWN			
10. Founds, cuts & fills	10) "			
11. Repaired	11) "			
12. Associated floors	12) "			
13. Plastered	13) N/A			
14. Wall core	14) N/A			
15. Types of brick (%)	15) UNKNOWN			
16. Composition of bricks	16) "			
17. Dimensions of bricks (sample of three)	17) SEE #1			
Stratigraphic Matrix		Abuts		Above
		Abutted by		Below
		Bonded into		
		Contiguous with		
INTERPRETATION		Enclosing	<u>Internal</u>	External
Reason for decay	CORE OF REPAIR WALL (31136) - EXCAVATED IN			
Indications of original dimensions	2009 AS PART OF (31136) ALTHOUGH RECOGNISED			
Indications of original functions	AS A SEPARATE FEATURE.			
SPACE: 11577, 11580, 11582				
STRUCTURE: 15112.				
Associated contexts: (31136) [31137]				
Context Same As:				
Drawing Nos: 2009-31136.				
<b>Photographs</b> (feature in plan, elevation, materials used, surface treatment e.g. plaster, paint etc.)		<b>Finds</b>		<b>Samples</b> (flotation, wet sieve, materials used e.g. bricks, stone, wood, bonding material etc.)
Photograph No.	Description	Description	Artefact no.	Sample No. Description
		Phase:	Checked	Initials DCS Date 27 APRIL 2013

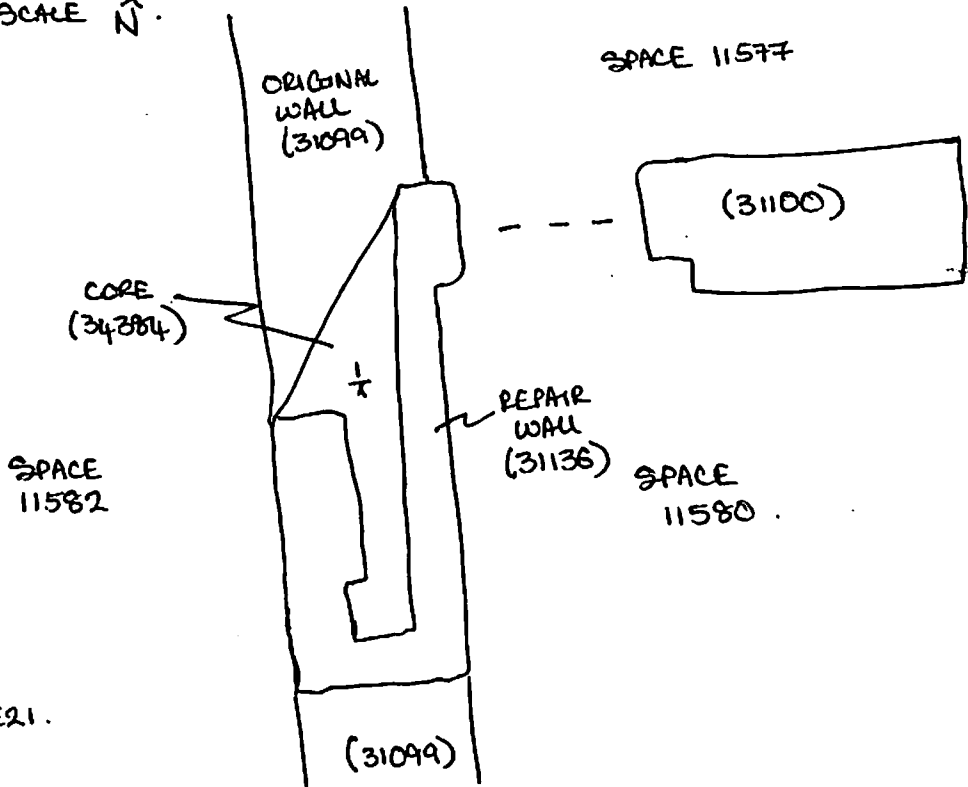
34384

Sketch Drawings (in plan and in profile)

Remember: do not just draw the architectural feature in isolation. Show how it relates to surrounding features and include details of surface treatments, repairs/modifications/damage, bonding material(s), and associated cuts. Annotate all aspects of the feature or use a Drawing Key. Measurements must be included for all aspects of the feature and surrounding features.

Sketch Plan - Include grid co-ordinates, North arrow, and elevations.

NOT TO SCALE  $\uparrow$  N.



1 201-E21.

Profile Sketch

- State direction the elevation of the feature being drawn is facing e.g. 'West Facing Elevation of Feature ...
- If feature was drawn in section then include the grid co-ordinates and elevations.

TBM: 23.23  
 BS: 1.80  
 IH: 25.03

	Fs	EL
$\frac{1}{4}$	1.51	23.52